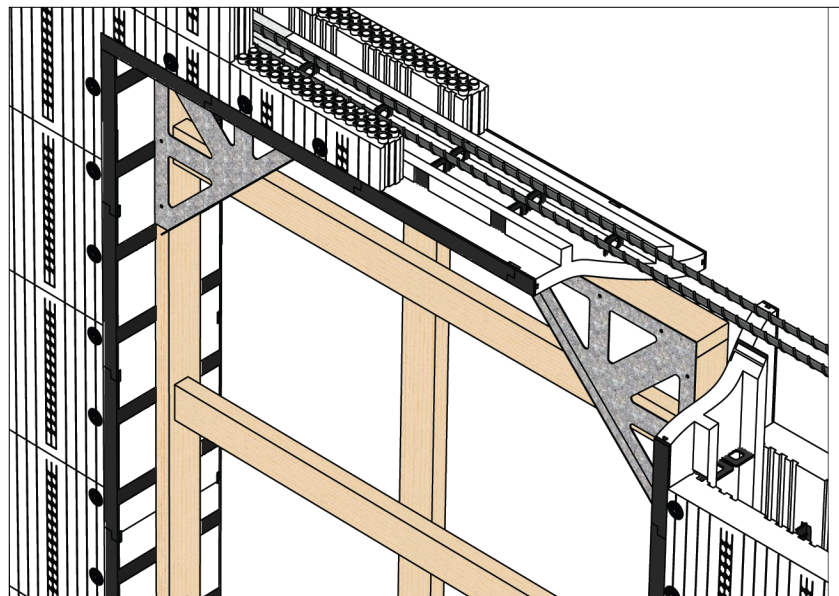
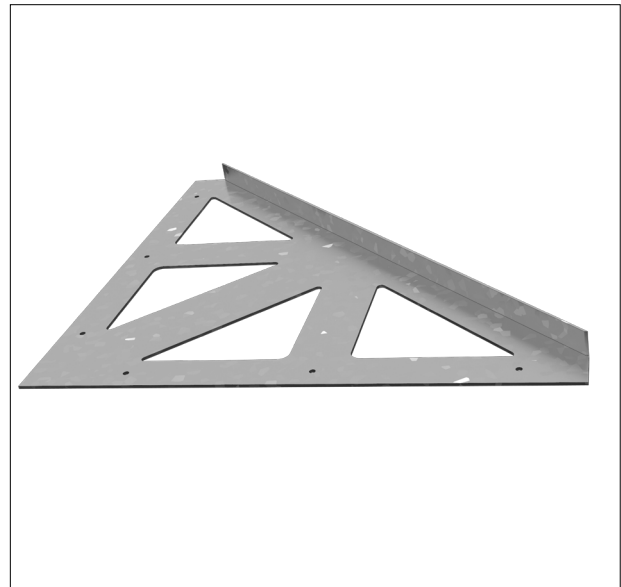
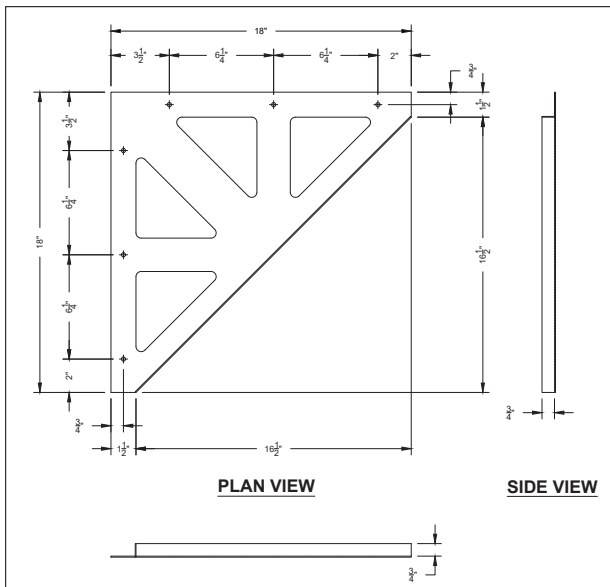


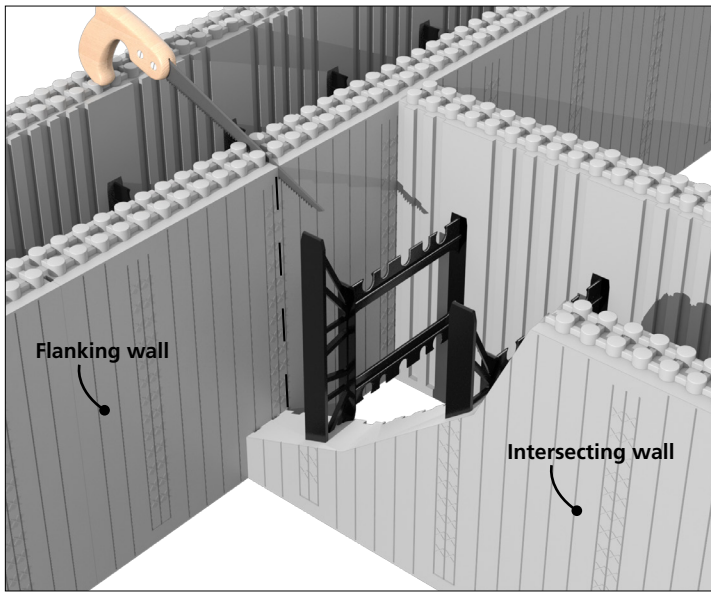
Logix ICF are composed of expanded polystyrene (EPS) which makes field cuts and assembling custom corners, radius, columns, pilasters, and intersecting walls easily fabricated. With some creativity, a variety of wall styles can be accomplished; However, it is crucial to have proper bracing to prevent bulges and blowouts when creating custom fabrications.

A common on-site fabrication is a t-wall junction. Logix ICF produces the T-Wall block made specifically for this application. However, some builders find themselves needing to fabricate t-walls out of Logix Standard forms on site.

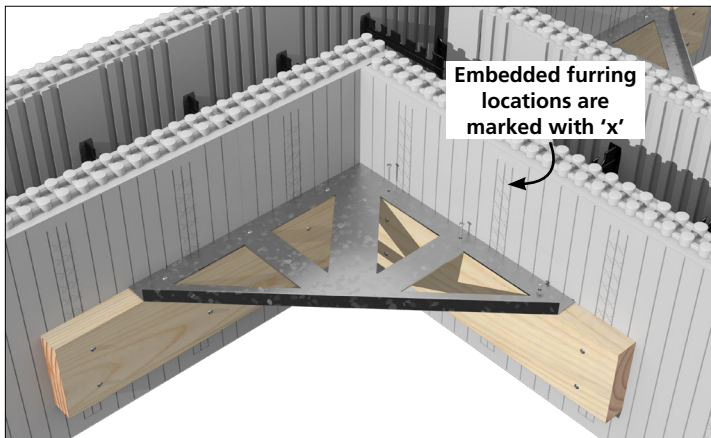
Traditionally used for supporting window and door bucks, the Logix Buck Brace has proven to be an effective option for bracing and supporting a fabricated t-wall. The Logix Buck Brace can be reused, and its strong design features allow for easy installation and positioning ensuring a perfectly square and secure corner.



Logix Buck Brace used at openings



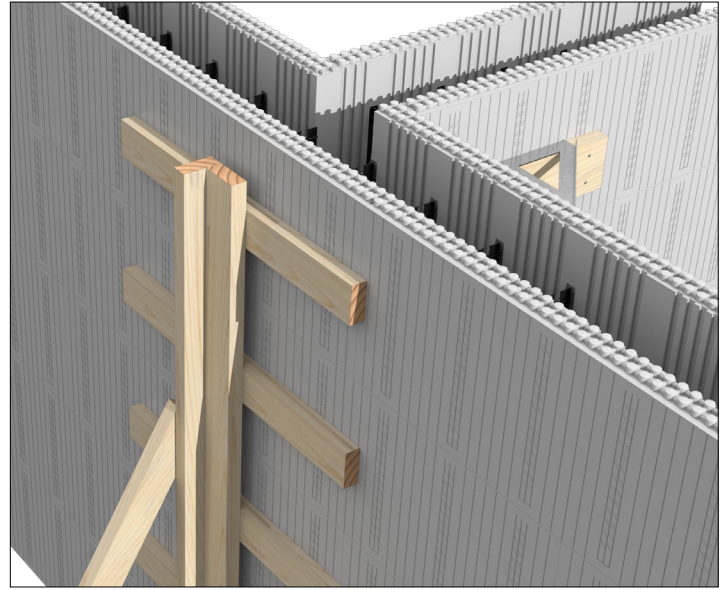
STEP 1: Using Standard forms measure and mark the t-wall location. Use a felt-tip marker to mark on the flanking wall where the ICF will create a t-junction. Mark from the inside face of the ICF and cut away the foam section. This will create butt joints at the t-junction, which can be tacked in place with foam adhesive.



STEP 2: Attach intersecting wall to flanking wall. Screw 2x4 strapping to the embedded furring tabs within the form panels. The 2x4s should be long enough so that it is fastened to a minimum 3 furring tabs. Fasten the Logix Buck Brace to the 2x4s making sure the Buck Brace is tight against the ICF. The Buck Brace should be installed on both sides of the t-wall.



STEP 3: 2x4 strapping and Buck Braces should be attached at every course of ICF installed. Make sure to add the required reinforcement as each course is installed.



STEP 4: Additional form support should be added to the back side of the t-wall junction.

For detailed information, refer to the Logix Installation Guide, contact your local logix representative or email info@logixbrands.com.