



THE VIKING LONGHOUSE



TYPE OF BUILD	Residential	SIZE	2,300 sq. ft.
LOCATION	Luther, OK	YEAR BUILT	2021

DESIGN HIGHLIGHTS

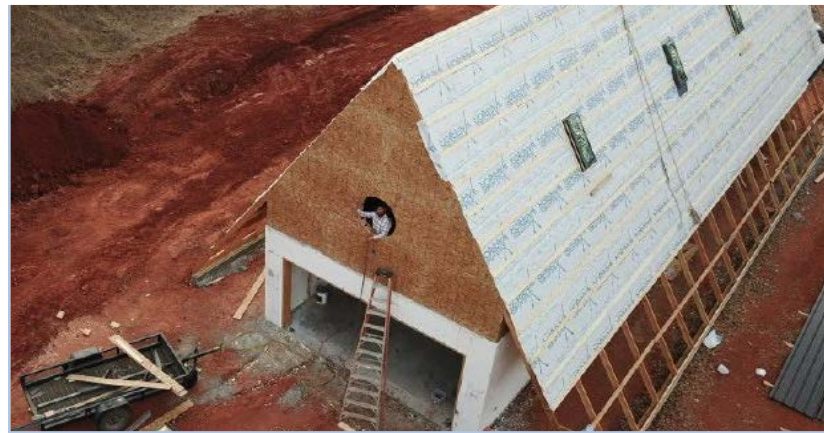
This design concepts has roots in the ancient Viking Longhouse and it creates an ideal space for passive cooling and heating techniques. This A-frame structure creates great thermal mass while the roof system, which overhangs each side by 9', provides lots of space for covered porches and greenhouses.

CONSTRUCTION FACTS

The rectangular slab is oriented east to west and measures 20' x 80'. The 2nd level i-joint floor system is supported on the Logix ICF walls by 2" x 12" ledgers and anchor bolts. The wood-framed gable roof is insulated with 2" closed cell spray foam insulation. The Logix walls were finished with stucco, inside and out.

RESILIENCE, SUSTAINABILITY & COMFORT NOTES

The kitchen is open to the second floor with a Big Ass fan filling the space. There are fans in each bedroom with a large custom wood vent above each fan, and each bedroom has a north facing operable skylight to allow for natural stack effect ventilation.



“The Logix ICF system helped me to create a passive home, which if it goes according to plan, will not have any monthly heating or cooling costs.”

Casey M.,
Homeowner



RUNNER UP - SMALL RESIDENTIAL

CONTACT LOGIX ICF
 Scott Rudd
 sruud@formsystemsinc.com
 1-888-838-5038

888-415-6449
LogixICF.com
Info@LogixICF.com