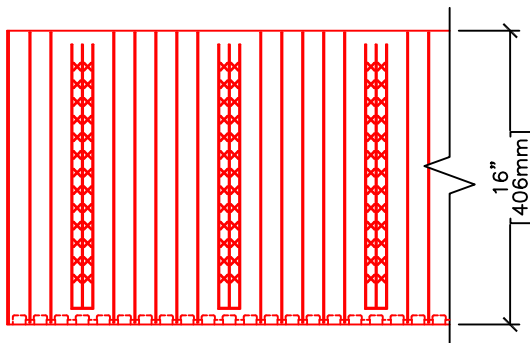
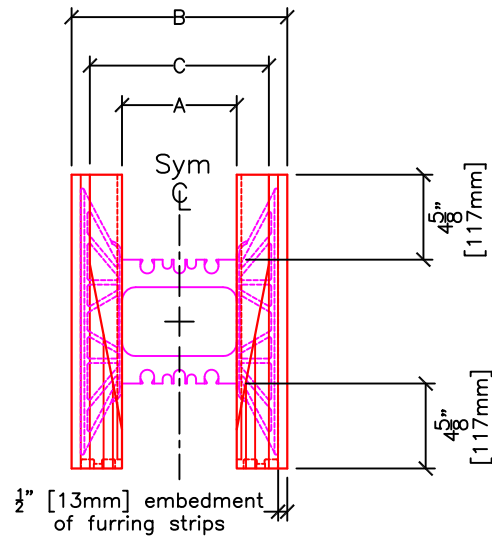


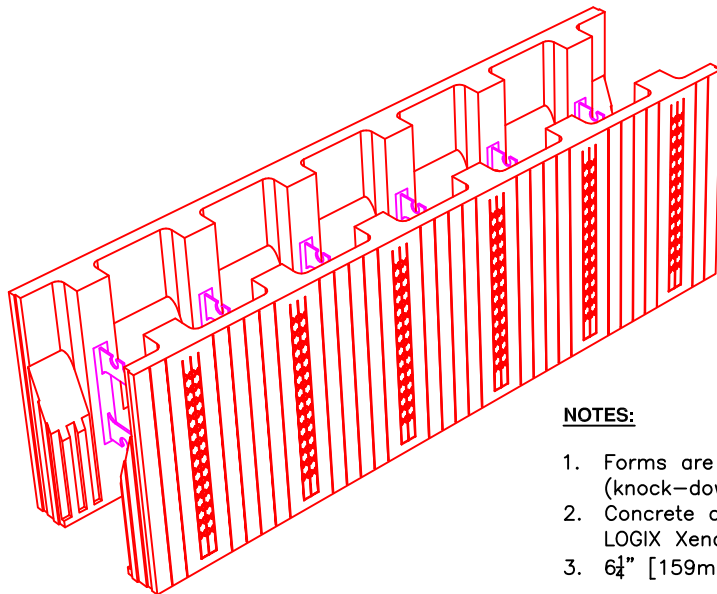
PLAN VIEW



SIDE ELEVATION



END VIEW



FORM SIZES

	4" (102mm)	6.25" (159mm)	8" (203mm)	10" (254mm)	12" (305mm)
A	4" (102mm)	6.25" (159mm)	8" (203mm)	10" (254mm)	12" (305mm)
B	9.5" (241mm)	11.75" (298mm)	13.5" (343mm)	15.5" (394mm)	17.5" (445mm)
C	7.5" (191mm)	9.75" (248mm)	11.5" (292mm)	13.5" (343mm)	15.5" (394mm)

NOTES:

1. Forms are available as assembled (LOGIX PRO) or unassembled (knock-down) form blocks (LOGIX KD. See 5.1.18).
2. Concrete core thickness wider than 12" (305mm) are available using LOGIX Xenders (See 5.1.22).
3. 6 1/4" [159mm] Double Tapered Top Form shown.