



THE WEST COAST 950

Design, Floor Plan & Elevations



The West Coast 950

Design



ROOM SCHEDULE			
QUANTITY	ROOM	PERIMETER	AREA
MAIN FLOOR			
1	BATHROOM 1	40' - 5"	67 SF
2	BATHROOM 2	65' - 0 1/2"	98 SF
3	BEDROOM 1	57' - 10 1/2"	143 SF
4	BEDROOM 2	60' - 10 1/2"	148 SF
5	KITCHEN	57' - 10"	200 SF
6	LIVING ROOM	62' - 5"	243 SF



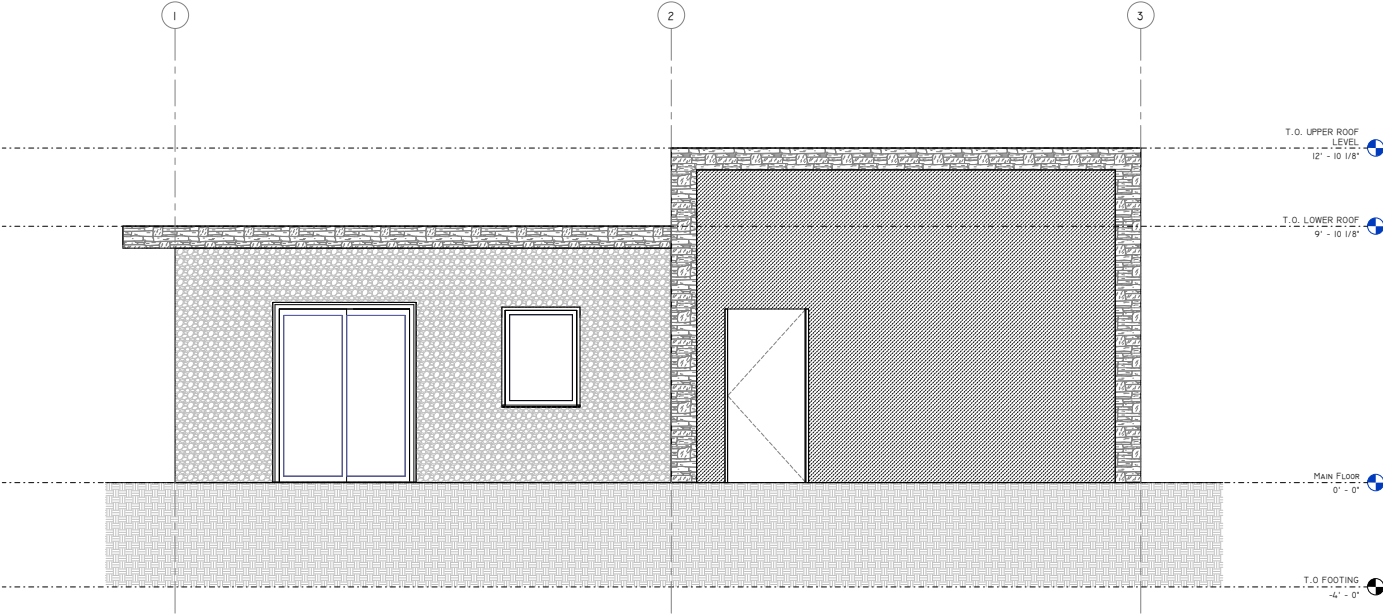
**Kitchen, Living Room,
2 Bedrooms, 2 Bathrooms**

**Interior Living Space:
956 sq ft**

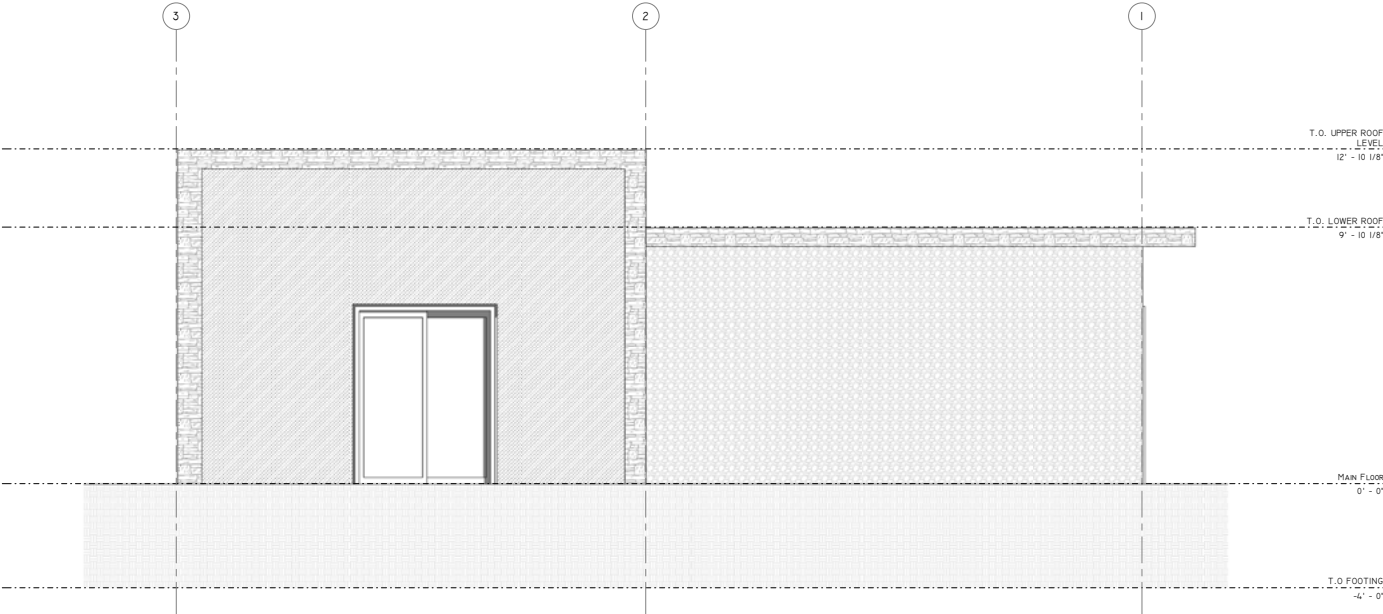
**Approximate Exterior
Dimensions:
37' W x 40' D**

The West Coast 950

Elevations



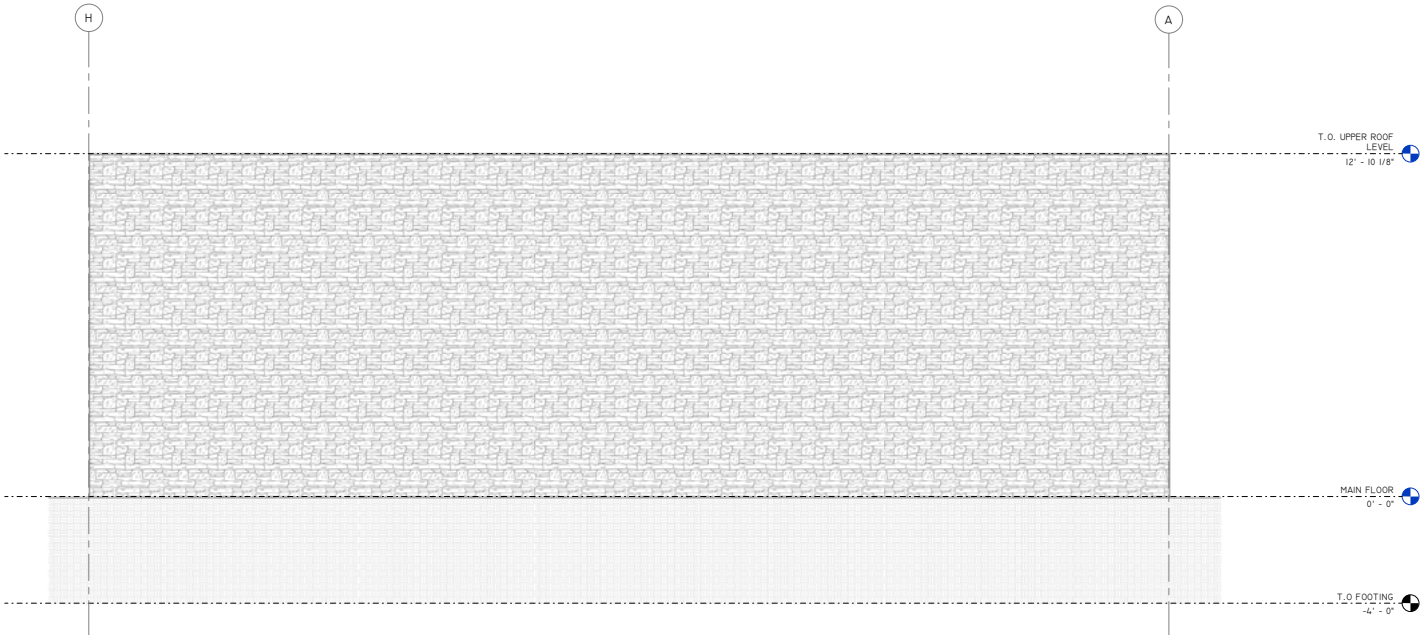
1 FRONT ELEVATION
1/2" = 1'-0"



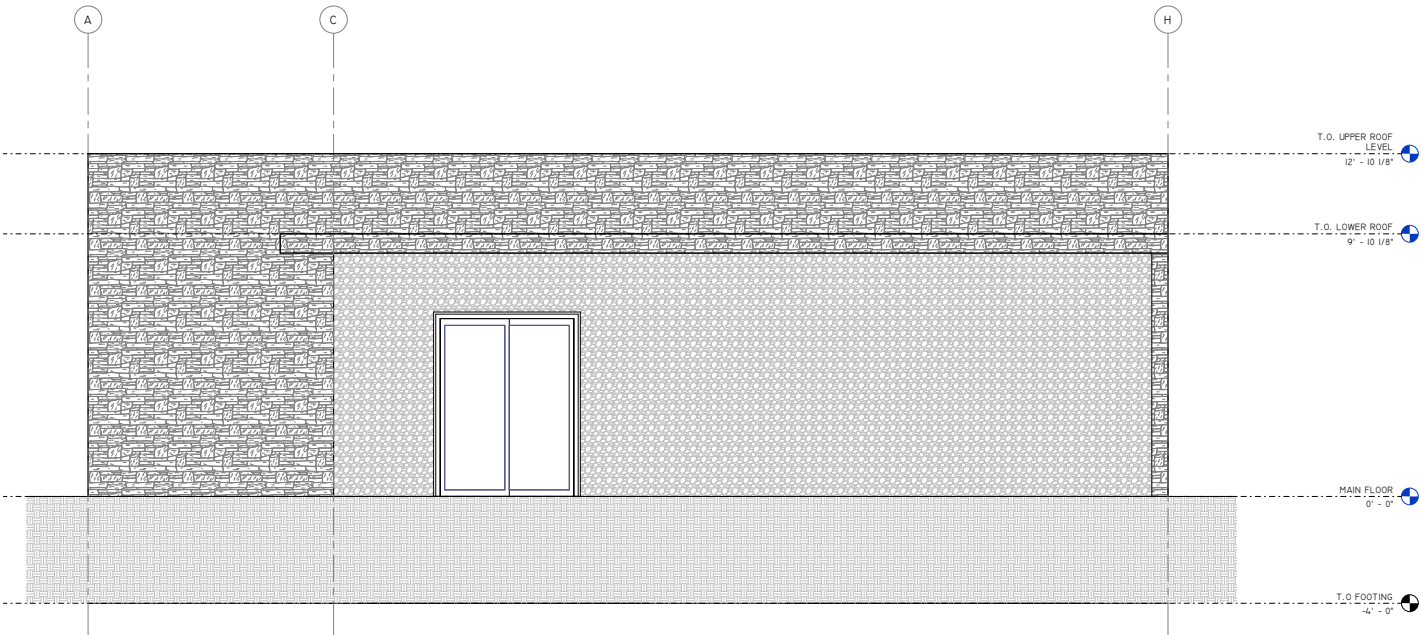
1 BACK ELEVATION
1/2" = 1'-0"

The West Coast 950

Elevations



1 RIGHT ELEVATION
A6 1/2" = 1'-0"



1 LEFT ELEVATION
A7 1/2" = 1'-0"

The West Coast 950

WITH BASEMENT

Design



ROOM SCHEDULE			
QUANTITY	ROOM	PERIMETER	AREA
BASEMENT			
1	BATHROOM 3	25' - 5"	38 SF
1	BATHROOM 4	45' - 2 1/2"	79 SF
1	BEDROOM 3	39' - 10"	99 SF
1	BEDROOM 4	68' - 1 1/2"	155 SF
1	FAMILY ROOM	69' - 2 1/2"	298 SF
1	FOYER 2	87' - 3 1/2"	143 SF
1	LAUNDRY HOOK UP	30' - 1"	56 SF
1	OFFICE NOOK	22' - 10"	32 SF
GROUND FLOOR			
1	BATHROOM 1	39' - 6 1/2"	62 SF
1	BATHROOM 2	24' - 5"	37 SF
1	BEDROOM 1	44' - 10 1/2"	114 SF
1	BEDROOM 2	60' - 10 1/2"	148 SF
1	FOYER 1	47' - 2"	95 SF
1	KITCHEN	57' - 2"	202 SF
1	LIVING ROOM 1	62' - 2"	241 SF



**Kitchen, Living Room,
Family Room, 4 Bedrooms,
4 Bathrooms
(Including Basement)**

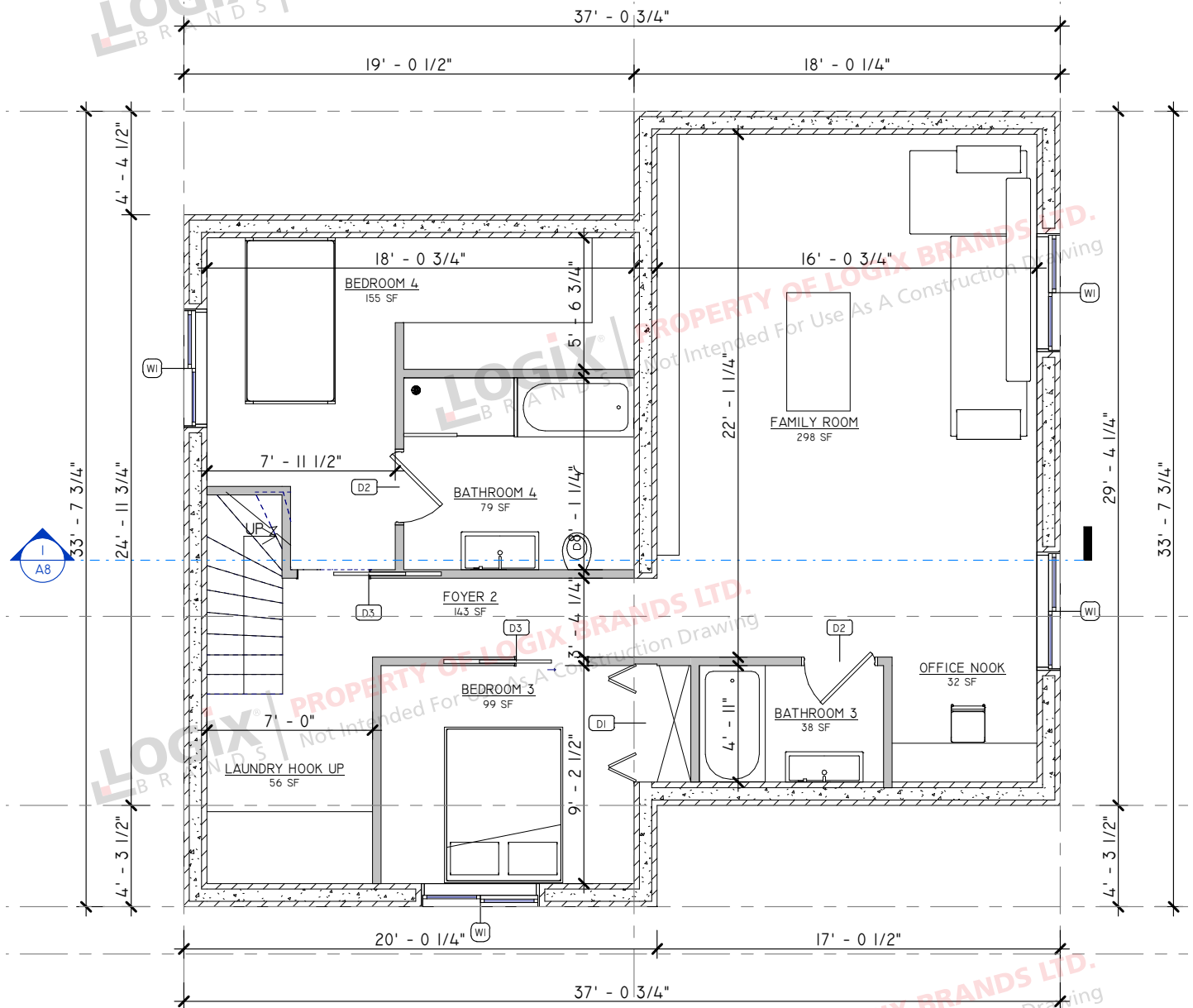
**Interior Living Space:
Ground Floor: 956 sq ft
Basement: 920 sq ft**

**Approximate Exterior
Dimensions:
37' W x 40' D**

The West Coast 950

WITH BASEMENT

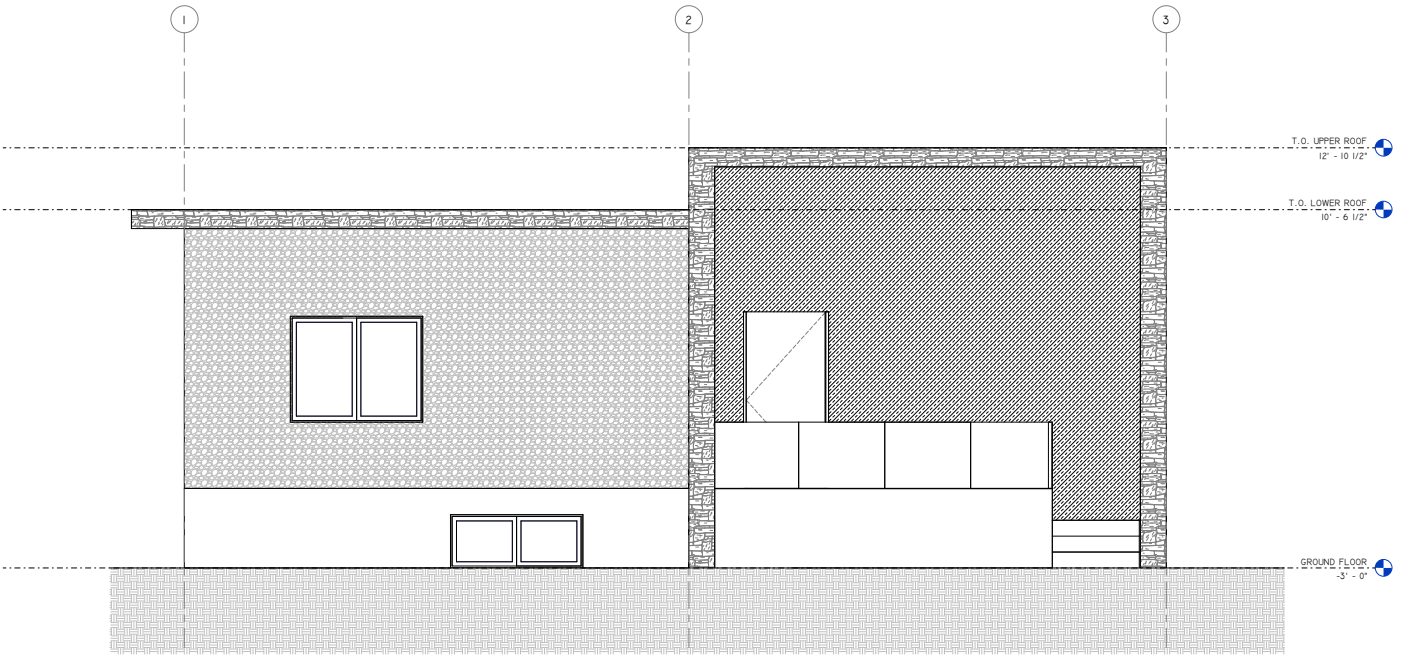
Floor Plan - Basement



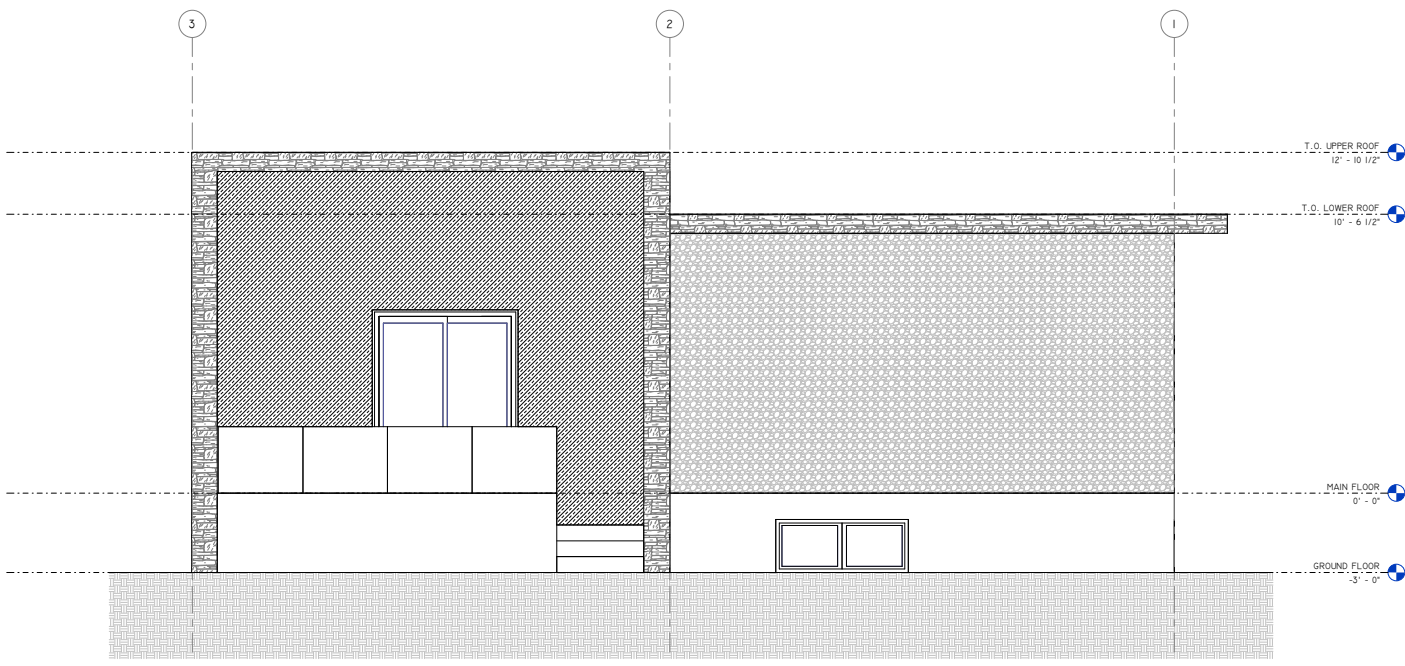
The West Coast 950

WITH BASEMENT

Elevations



1 FRONT ELEVATION
1/2" = 1'-0"

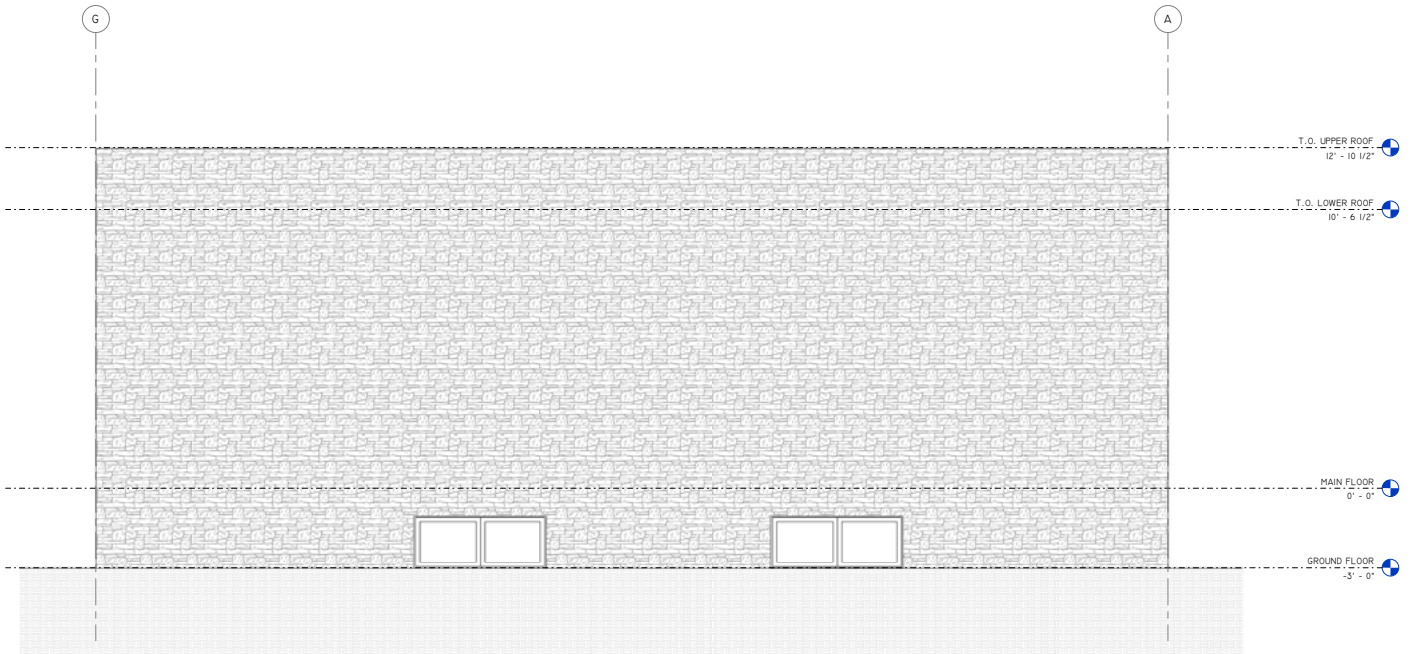


2 BACK ELEVATION
1/2" = 1'-0"

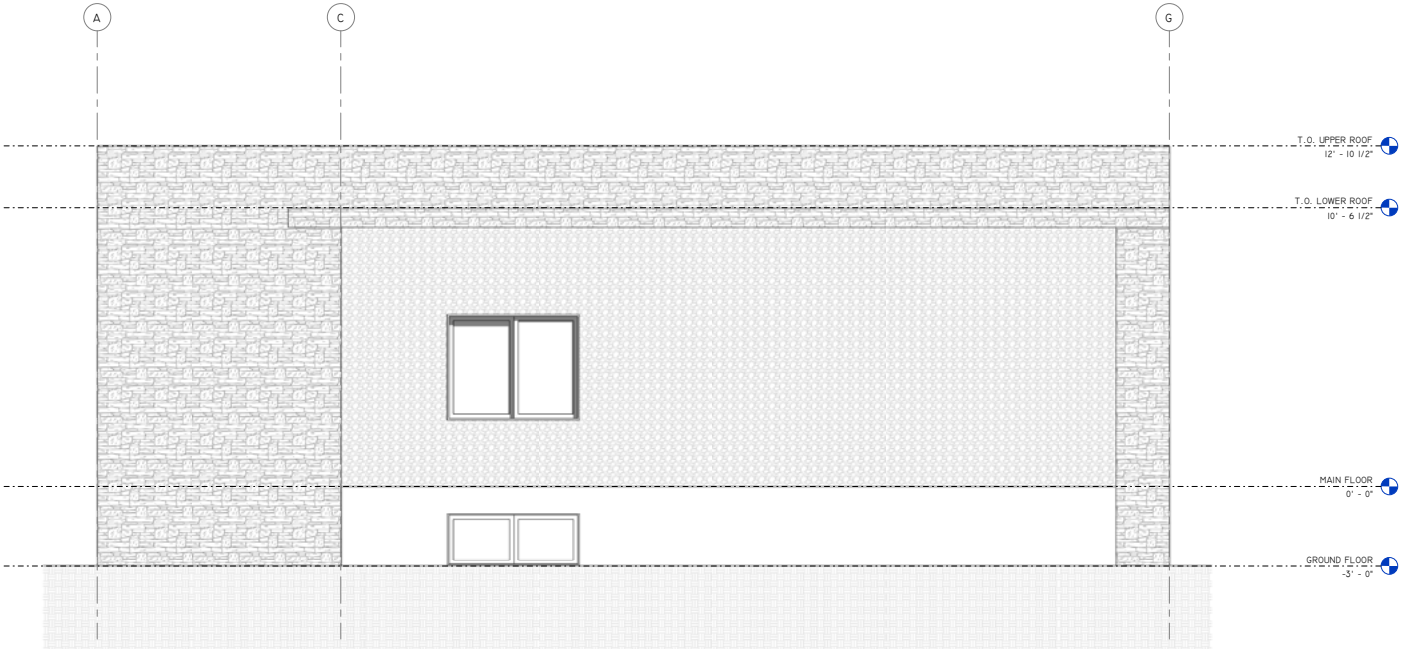
The West Coast 950

WITH BASEMENT

Elevations



RIGHT ELEVATION
1/2" = 1'-0"



LEFT ELEVATION
1/2" = 1'-0"



**REQUEST A QUOTE &
ORDER A PLAN SET
BASED ON THIS DESIGN**

Your Logix ICF advisor can refer you to a designer who will provide a quotation for your complete plan set including any required modifications.

Please note that some locations may require specific engineering and/or local code adoptions. Be sure to check with your contractor or local building authority to see what is required for your area.



**CONNECT
WITH A LOCAL
MANUFACTURER**

888.838.5038

330 Cain Drive
Haysville, KS 67060-2004

888.706.7709

840 Division St.
Cobourg, ON K9A 5V2

877.789.7622

35 Headingley Rd.
Headingley, MB R4H 0A8

888.453.5961

11581-272 St.
Acheson, AB T7X 6E9

888.453.5961

6333 Unsworth Rd.
Chilliwack, BC V2R 5M3



info@LogixICF.com
LogixICF.com

A Product By

