



THE WEST COAST 750

Design, Floor Plan & Elevations



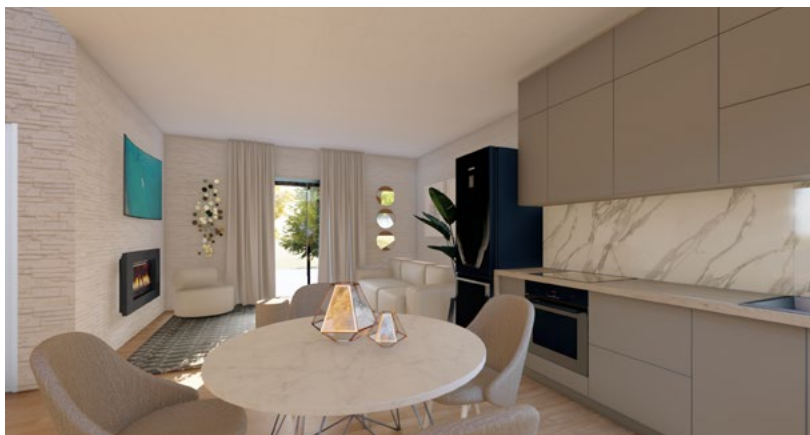
The drawings and images contained in these pages are current at the time of printing. However, the drawings and images may differ slightly when final plan sets are requested, as designs are subject to change.

The West Coast 750

Design



ROOM SCHEDULE			
QUANTITY	ROOM	PERIMETER	AREA
MAIN FLOOR LEVEL			
1	BATHROOM	28' - 6"	46 SF
1	BEDROOM 1	49' - 9"	155 SF
1	BEDROOM 2	47' - 9"	136 SF
1	FOYER	16' - 0"	15 SF
1	KITCHEN	55' - 11 1/2"	166 SF
1	LIVING ROOM	54' - 2 1/2"	180 SF



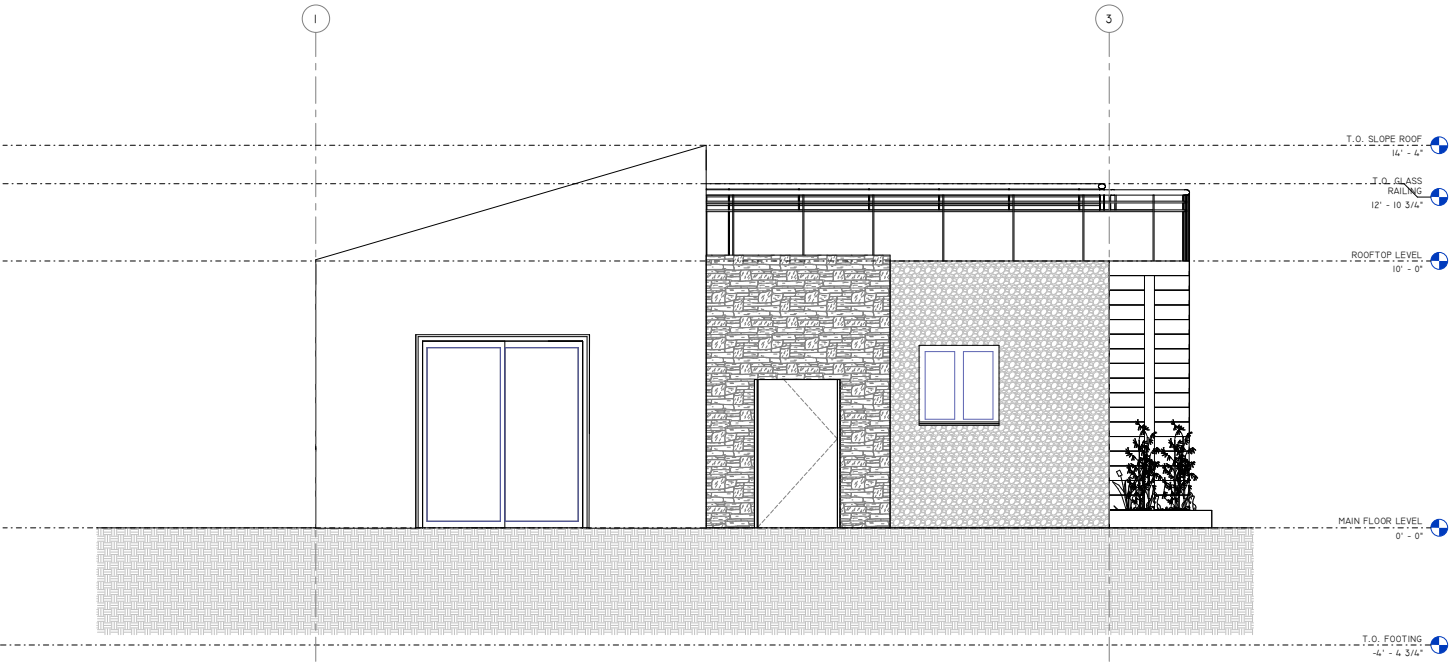
**Kitchen, Living Room,
1 Bedroom, 1 Bathroom**

**Interior Living Space:
726 sq ft**

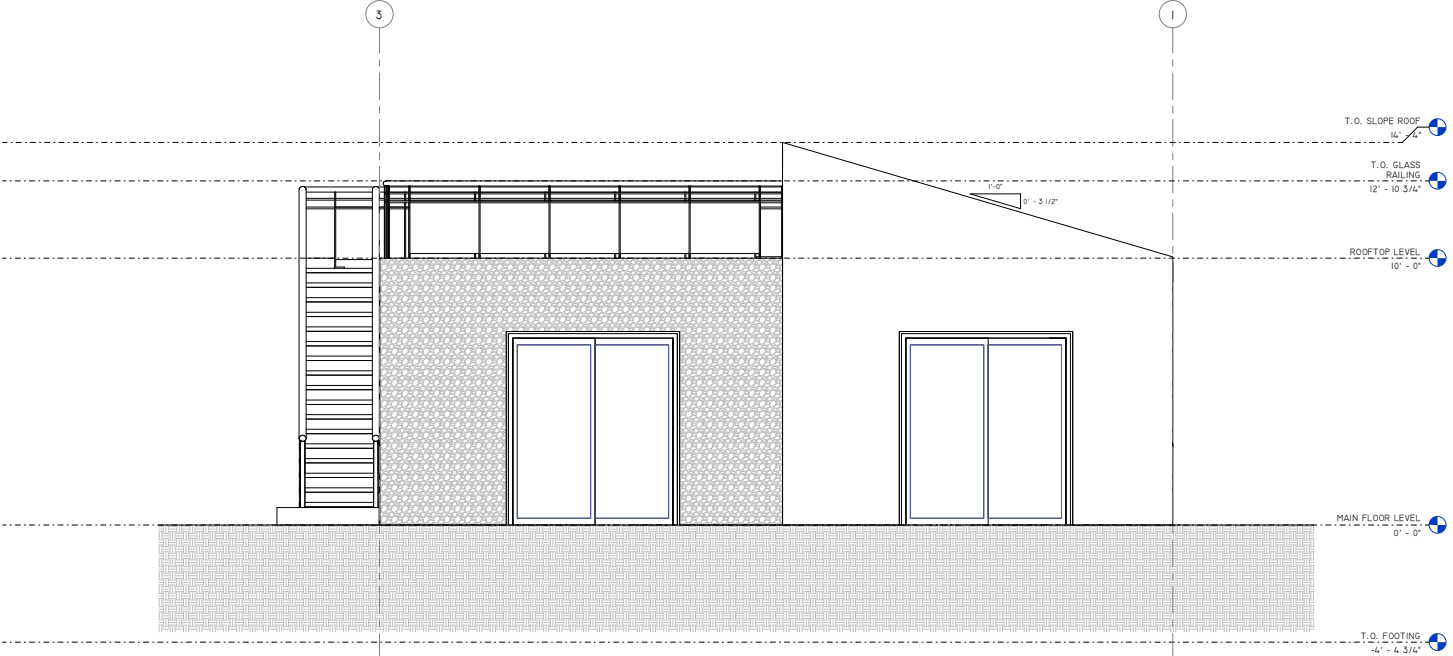
**Approximate Exterior
Dimensions:
30' W x 31'D**

The West Coast 750

Elevations



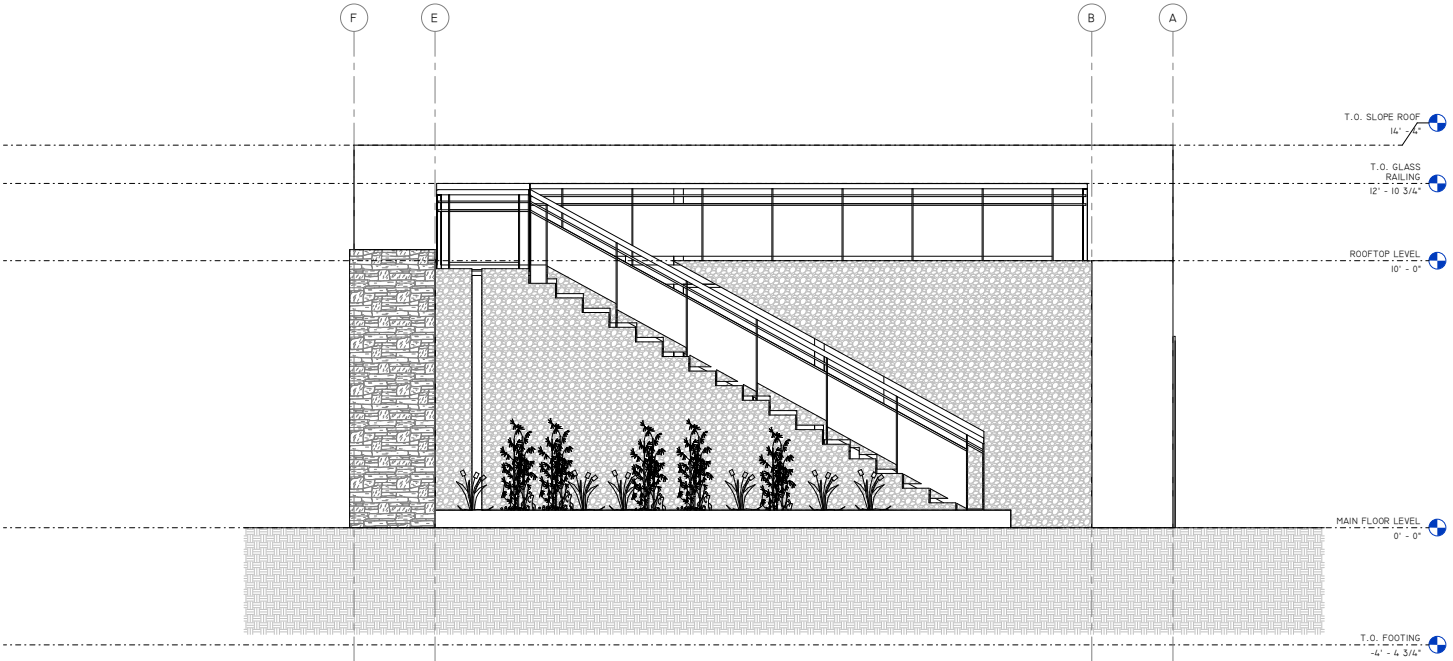
1
AS FRONT ELEVATION
1/2" = 1'-0"



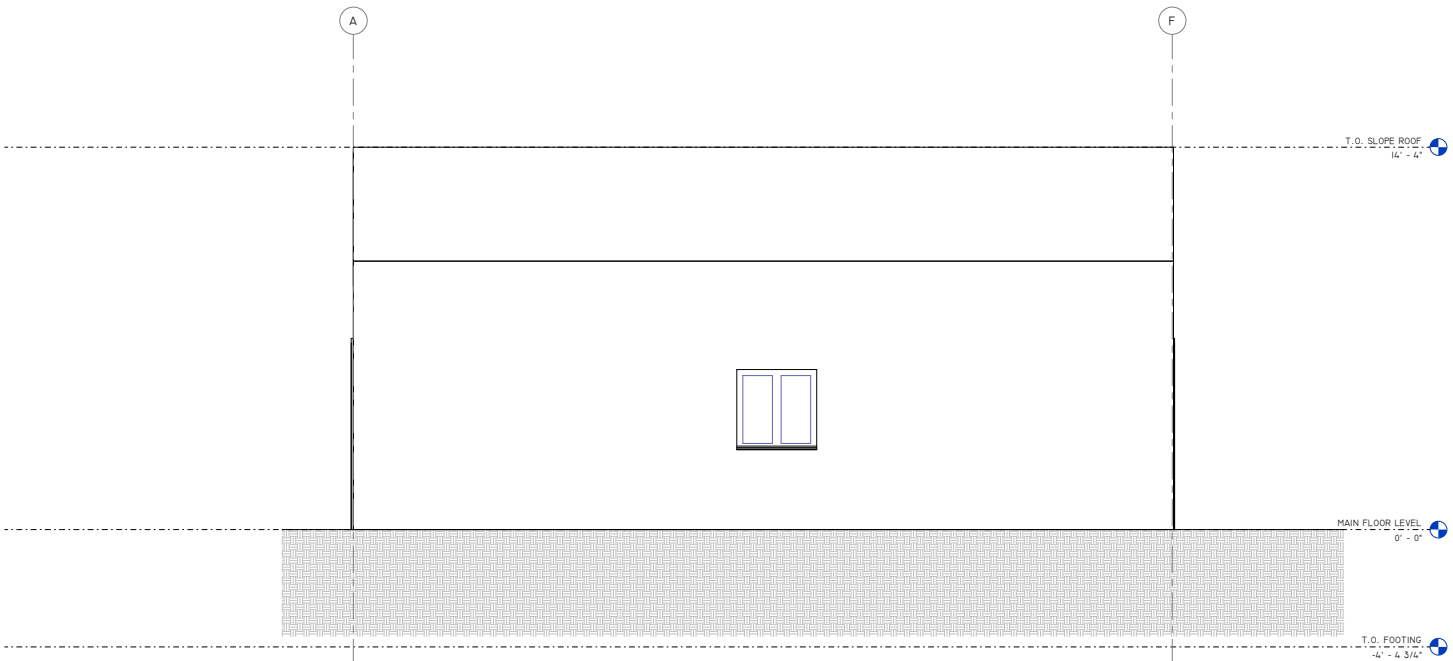
1
AS BACK ELEVATION
1/2" = 1'-0"

The West Coast 750

Elevations



RIGHT ELEVATION
 1/2" = 1'-0"



LEFT ELEVATION
 1/2" = 1'-0"



**REQUEST A QUOTE &
ORDER A PLAN SET
BASED ON THIS DESIGN**

Your Logix ICF advisor can refer you to a designer who will provide a quotation for your complete plan set including any required modifications.

Please note that some locations may require specific engineering and/or local code adoptions. Be sure to check with your contractor or local building authority to see what is required for your area.



**CONNECT
WITH A LOCAL
MANUFACTURER**

888.838.5038

330 Cain Drive
Haysville, KS 67060-2004

888.706.7709

840 Division St.
Cobourg, ON K9A 5V2

877.789.7622

35 Headingley Rd.
Headingley, MB R4H 0A8

888.453.5961

11581-272 St.
Acheson, AB T7X 6E9

888.453.5961

6333 Unsworth Rd.
Chilliwack, BC V2R 5M3



info@LogixICF.com
LogixICF.com

A Product By

