



The West Coast 500

Design



ROOM SCHEDULE			
QUANTITY	ROOM	PERIMETER	AREA
GROUND FLOOR			
1	BATHROOM	36' - 4 1/2"	60 SF
1	BEDROOM	51' - 7"	130 SF
1	KITCHEN	47' - 10"	142 SF
1	LIVING ROOM	42' - 5 1/2"	112 SF



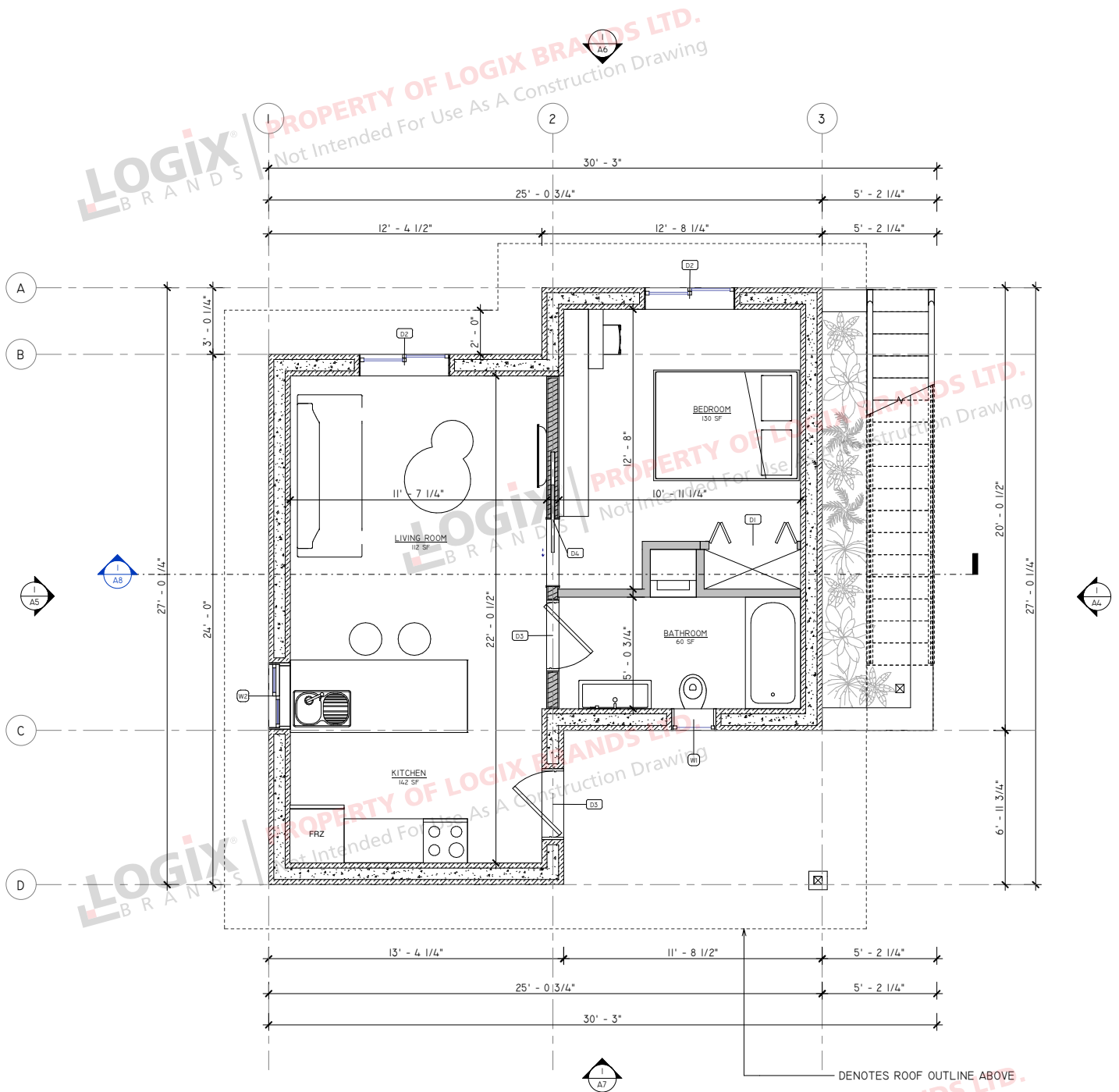
**Kitchen, Living Room,
1 Bedroom, 1 Bathroom**

**Interior Living Space:
460 sq ft**

**Approximate Exterior
Dimensions:
25' W x 27' D**

The West Coast 500

Floor Plan

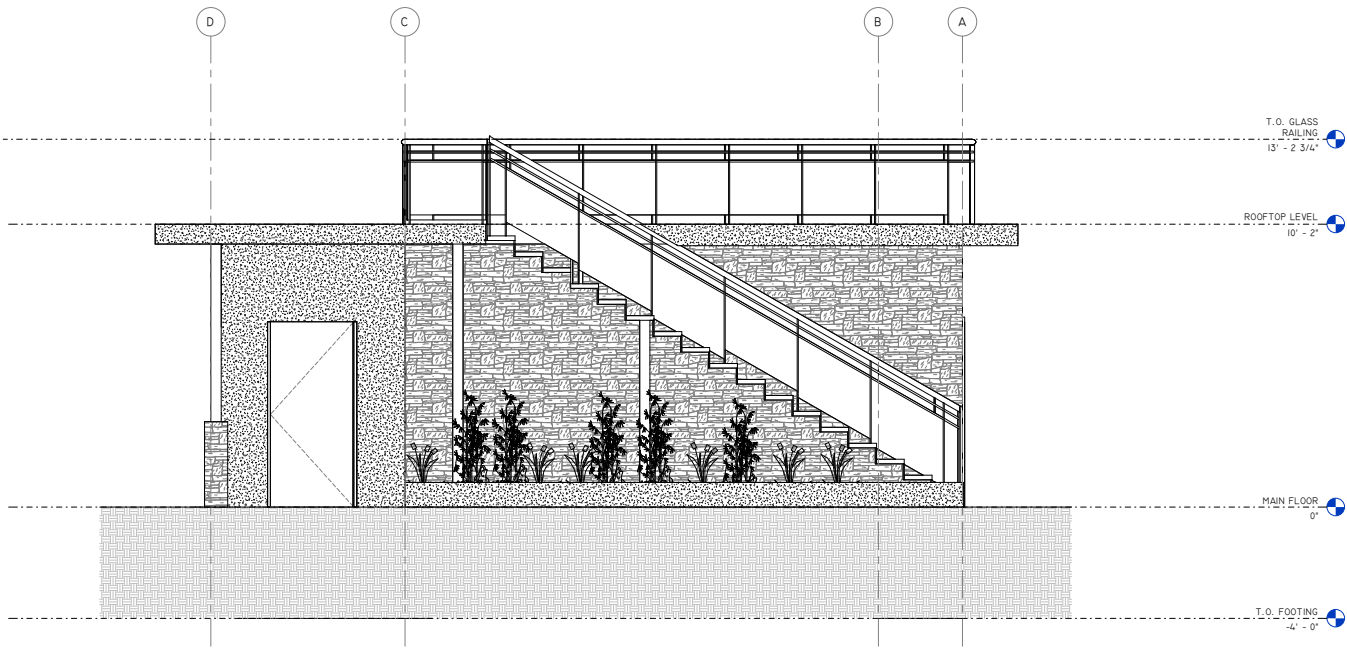


2 MAIN FLOOR PLAN
3/8" = 1'-0"

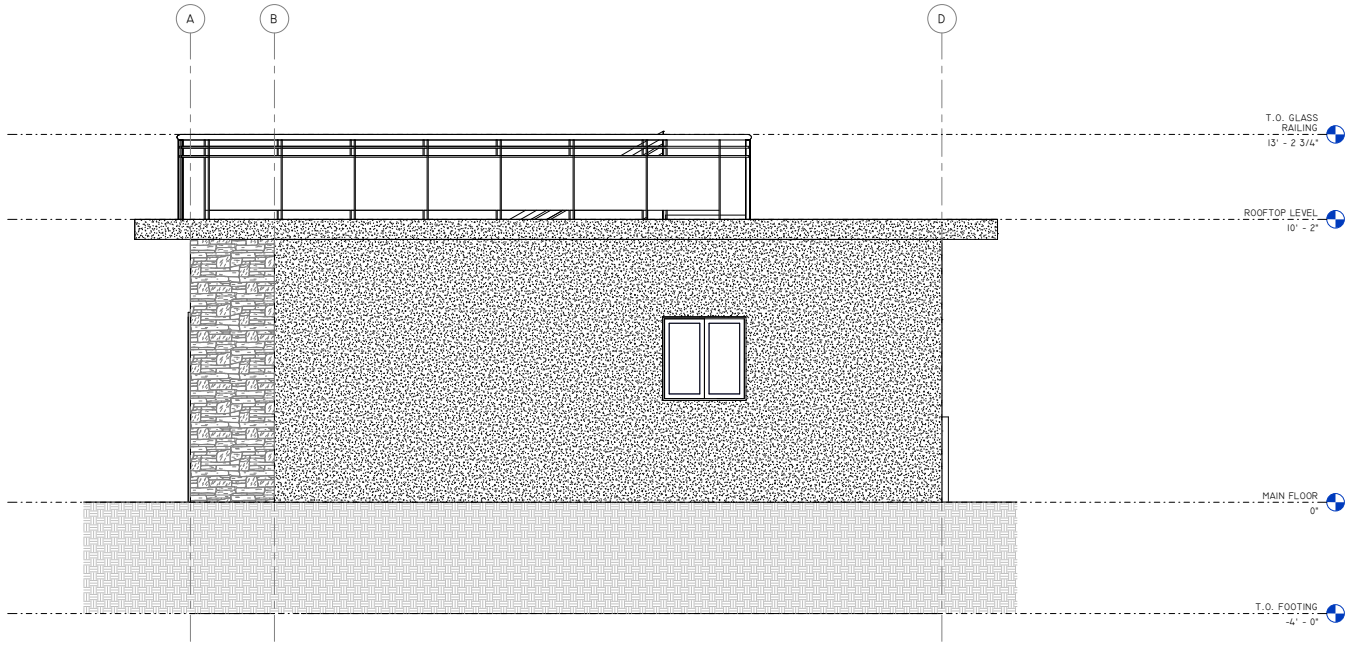
LOGIX BRANDS | PROPERTY OF LOGIX BRANDS LTD.
Not Intended For Use As A Construction Drawing

The West Coast 500

Elevations



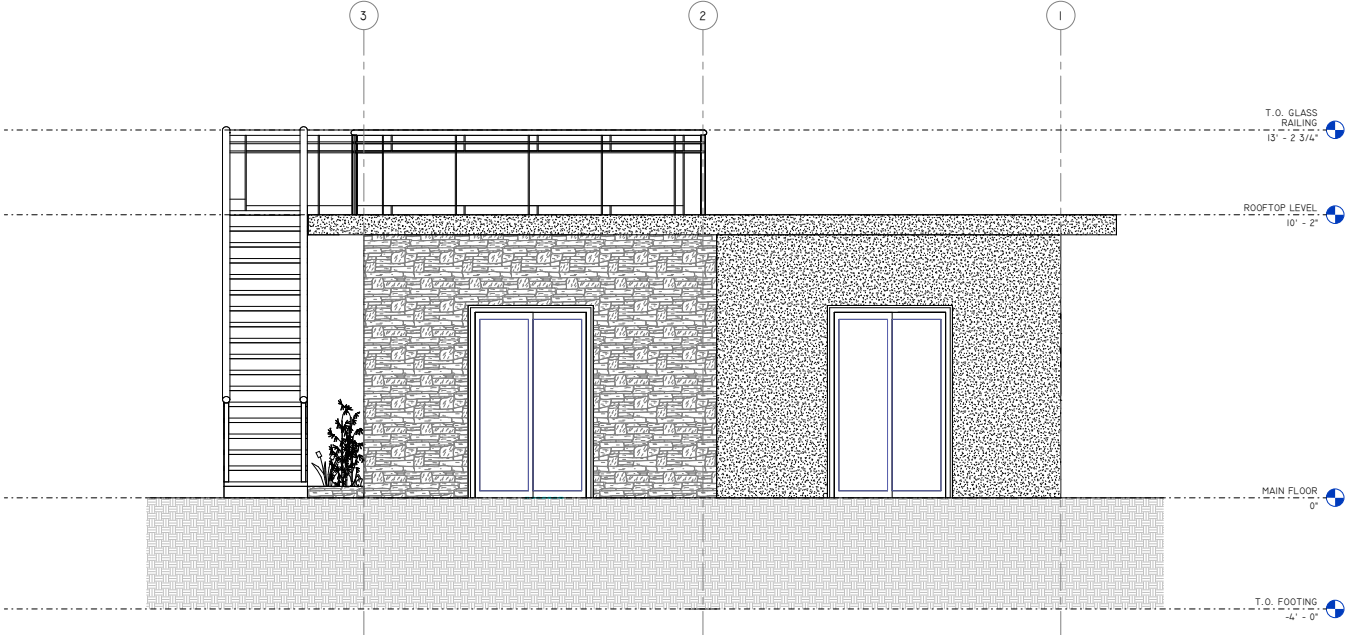
1
A4
FRONT ELEVATION
1/2" = 1'-0"



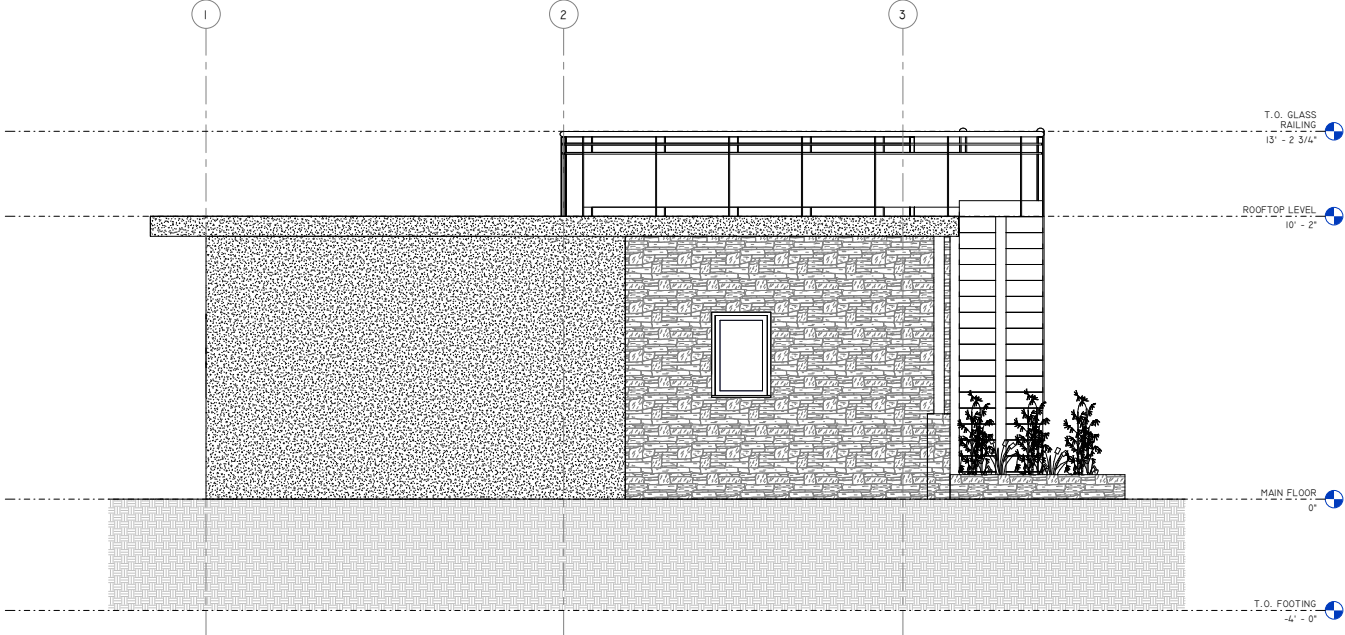
1
A5
BACK ELEVATION
1/2" = 1'-0"

The West Coast 500

Elevations



1
A6 RIGHT ELEVATION
1/2" = 1'-0"



1
A7 LEFT ELEVATION
1/2" = 1'-0"



**REQUEST A QUOTE &
ORDER A PLAN SET
BASED ON THIS DESIGN**

Your Logix ICF advisor can refer you to a designer who will provide a quotation for your complete plan set including any required modifications.

Please note that some locations may require specific engineering and/or local code adoptions. Be sure to check with your contractor or local building authority to see what is required for your area.



**CONNECT
WITH A LOCAL
MANUFACTURER**

888.838.5038

330 Cain Drive
Haysville, KS 67060-2004

888.706.7709

840 Division St.
Cobourg, ON K9A 5V2

877.789.7622

35 Headingley Rd.
Headingley, MB R4H 0A8

888.453.5961

11581-272 St.
Acheson, AB T7X 6E9

888.453.5961

6333 Unsworth Rd.
Chilliwack, BC V2R 5M3



info@LogixICF.com
LogixICF.com

A Product By

