



The West Coast 1250

Design



ROOM SCHEDULE			
QUANTITY	ROOM	PERIMETER	AREA
MAIN FLOOR			
1	BATHROOM 1	29' - 4"	50 SF
1	BEDROOM 1	39' - 9 1/2"	99 SF
1	BEDROOM 2	39' - 8"	98 SF
1	FOYER	84' - 11 1/2"	179 SF
1	KITCHEN	47' - 11"	135 SF
1	LIVING SPACE	71' - 5"	260 SF
UPPER LEVEL PLAN			
1	BATHROOM 2	33' - 2 1/2"	63 SF
1	MASTER BEDROOM	85' - 6"	261 SF



**Kitchen, Living Room,
3 Bedrooms, 2 Bathrooms**

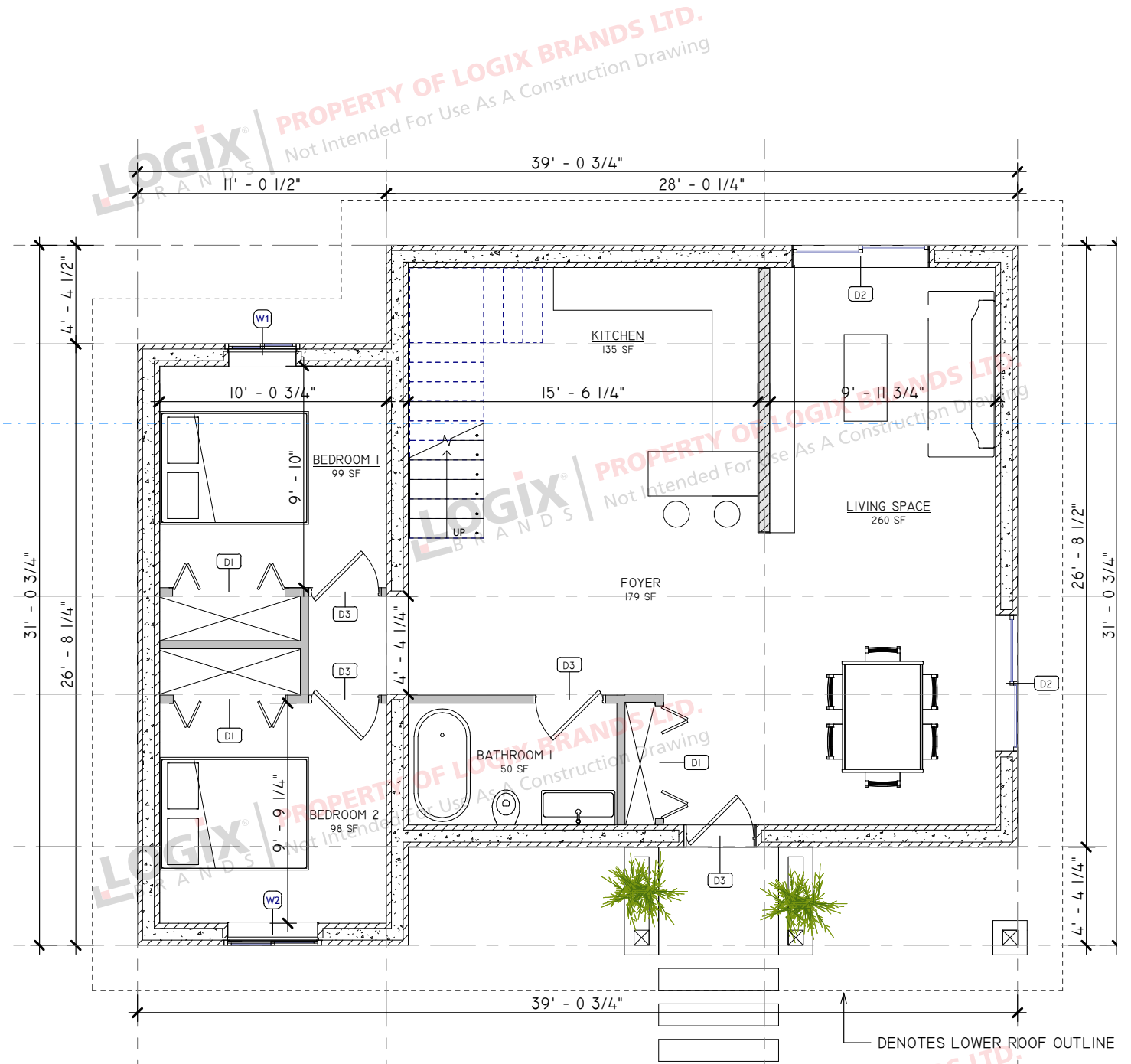
2 Storeys

**Interior Living Space:
1,263 sq ft**

**Approximate Exterior
Dimensions:
39' W x 31' D**

The West Coast 1250

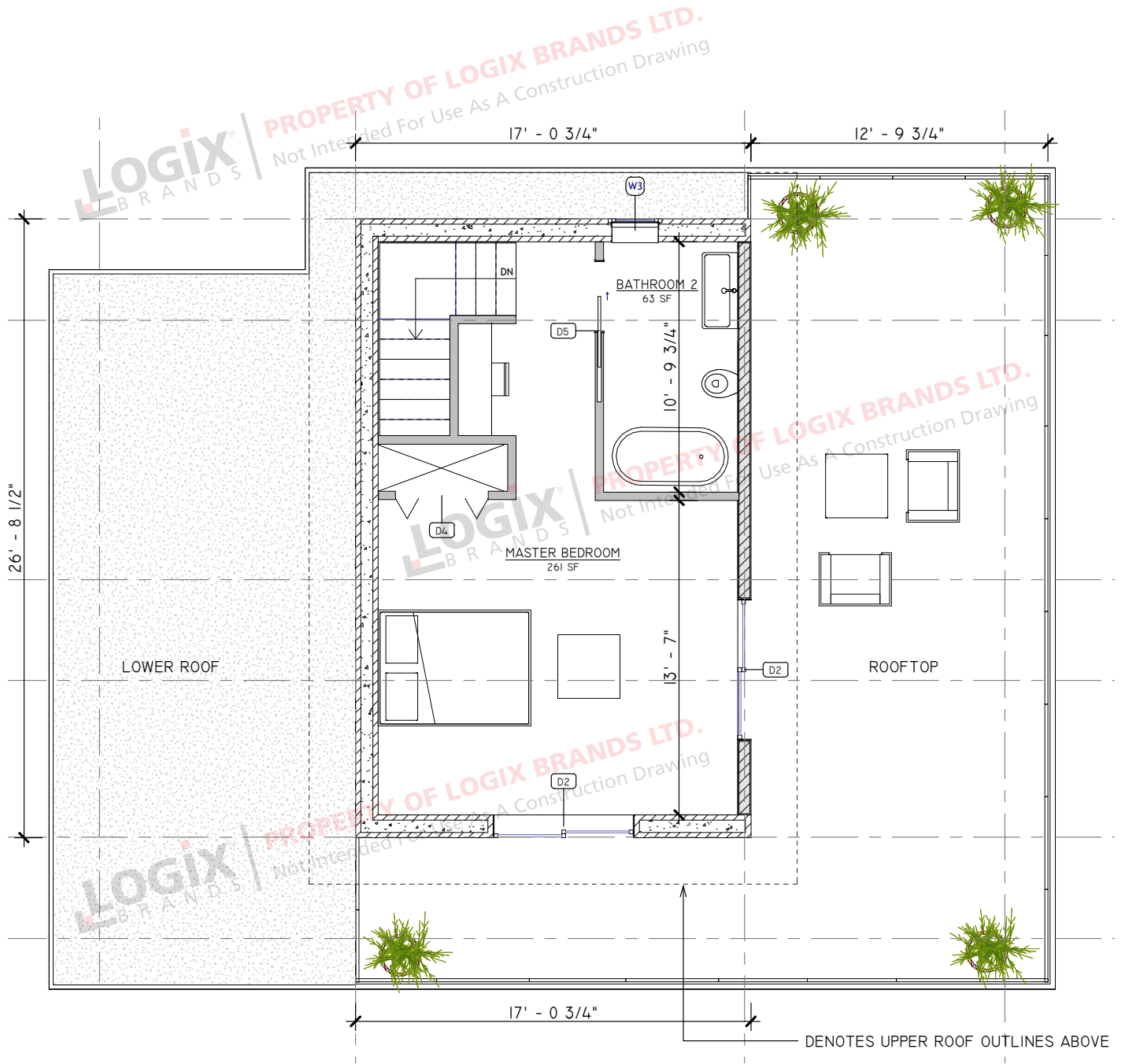
Floor Plan - Main Level



PROPERTY OF LOGIX BRANDS LTD.
Not Intended For Use As A Construction Drawing

The West Coast 1250

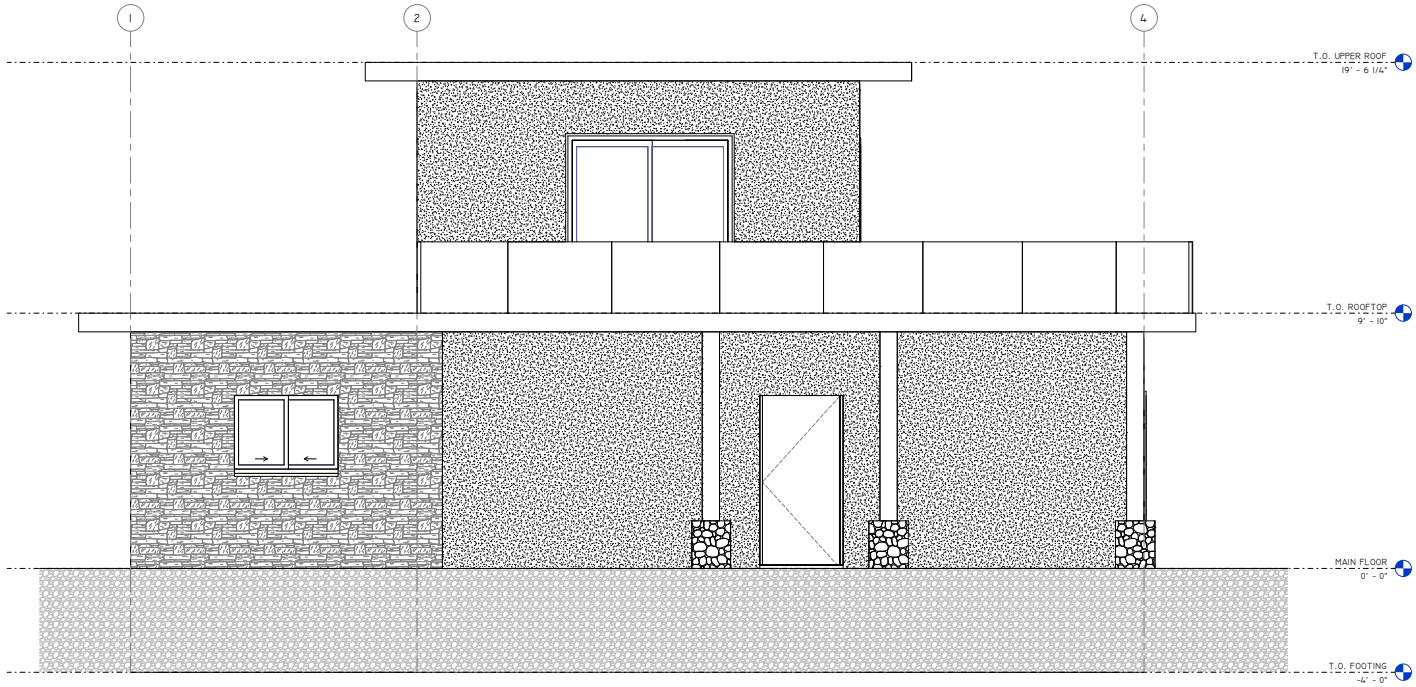
Floor Plan - Second Level



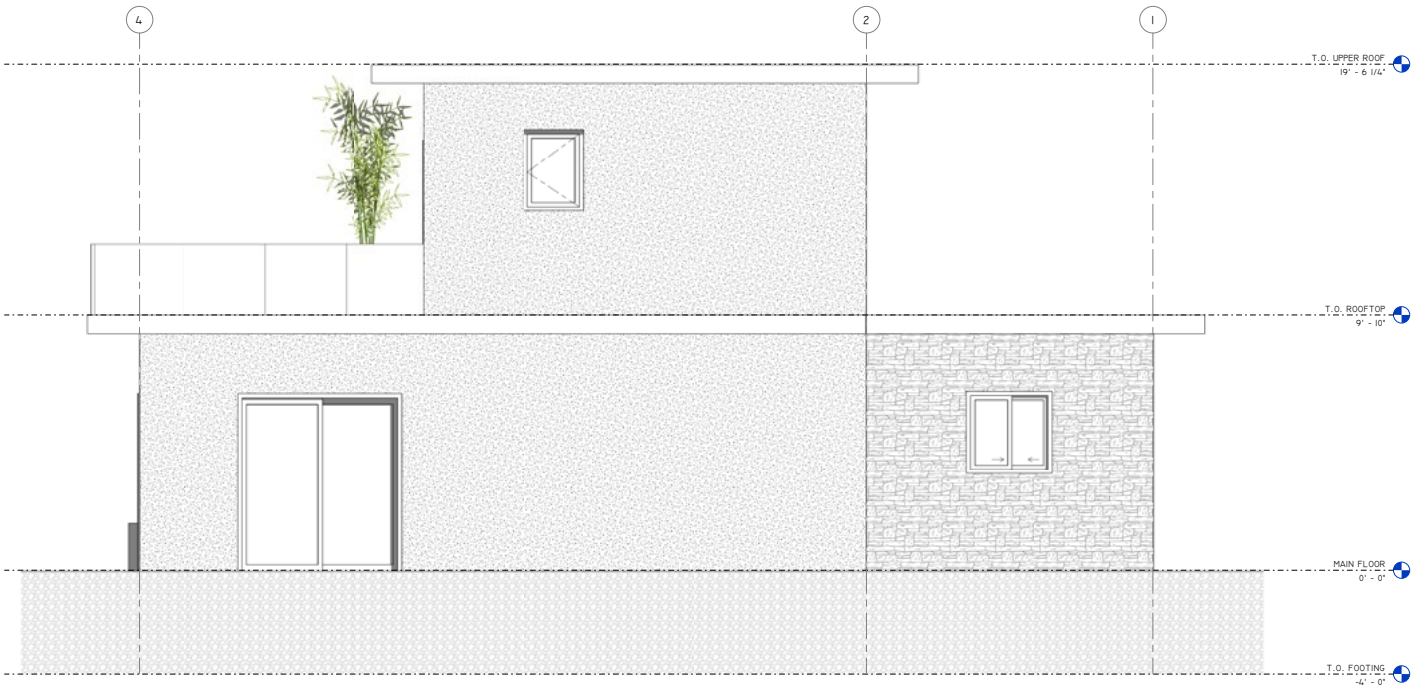
LOGIX BRANDS | PROPERTY OF LOGIX BRANDS LTD.
Not Intended For Use As A Construction Drawing

The West Coast 1250

Elevations



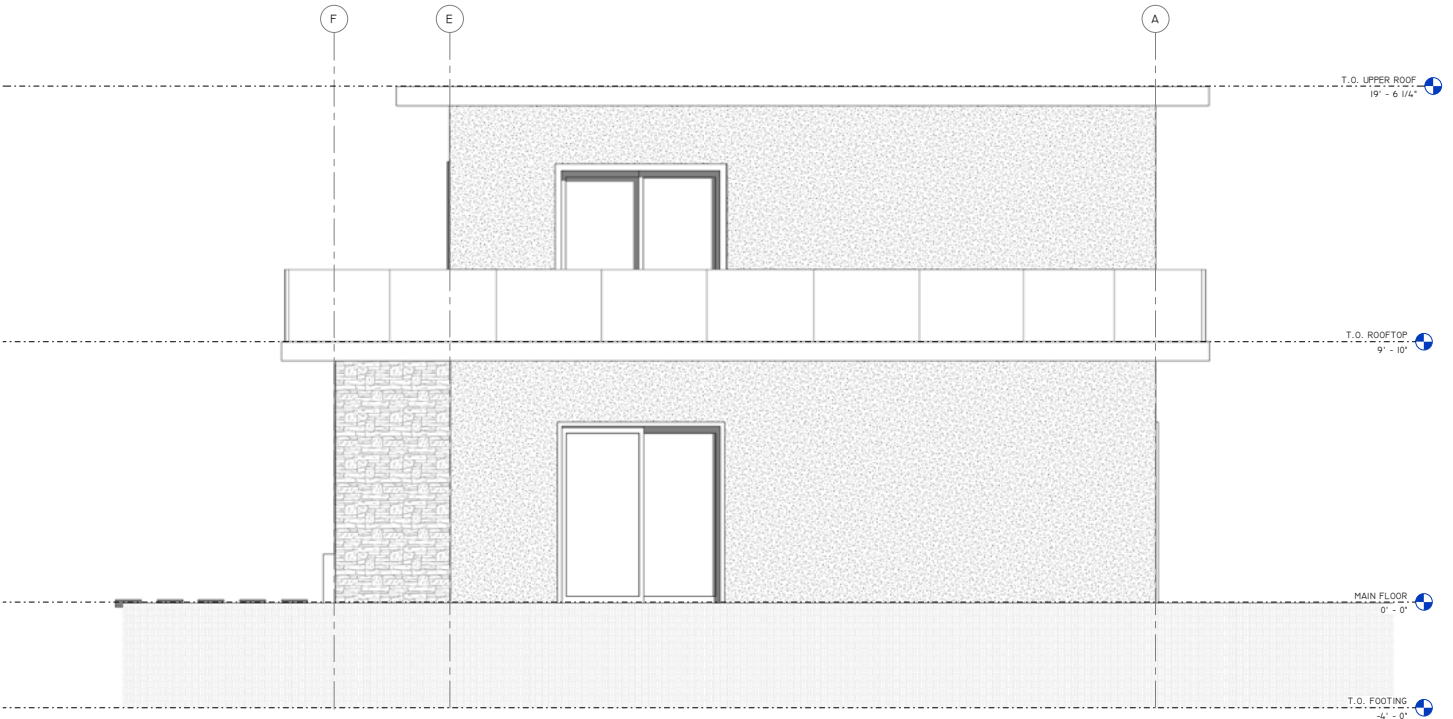
FRONT ELEVATION
1/2" = 1'-0"



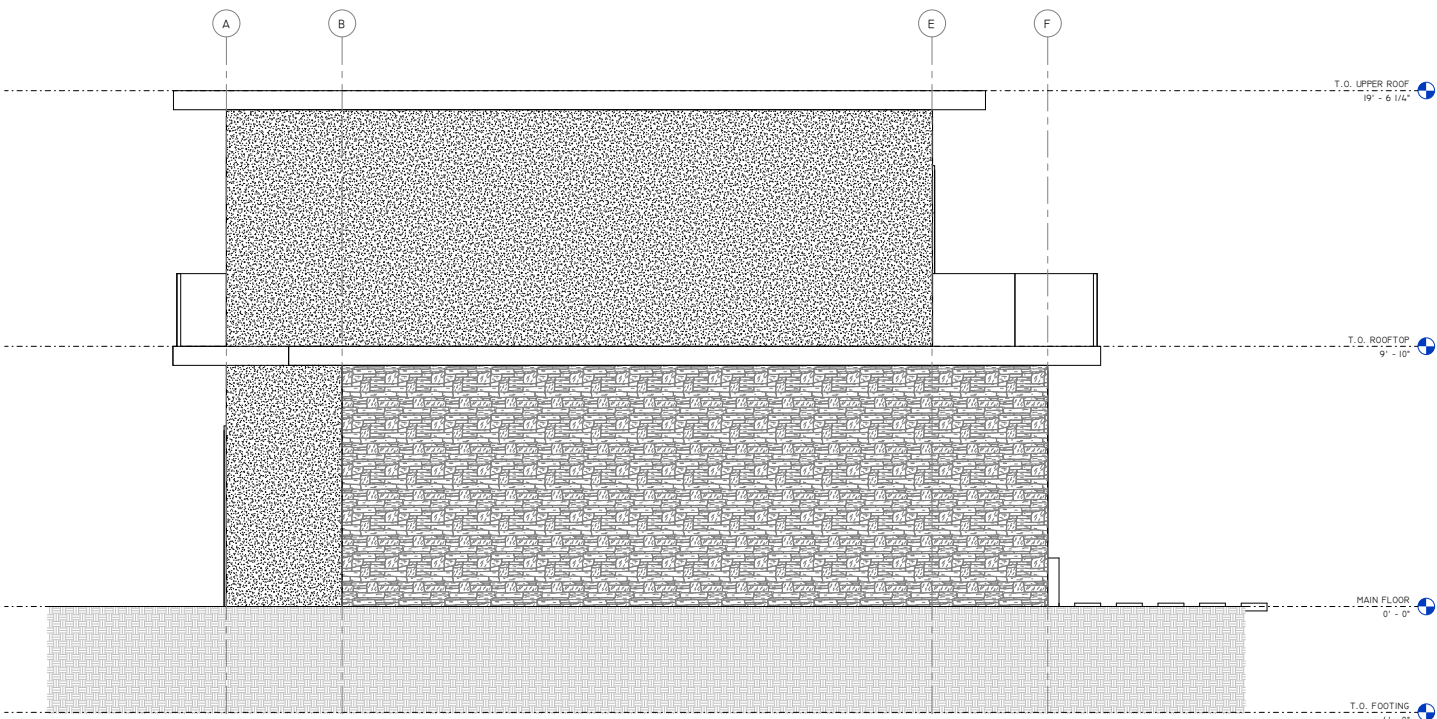
BACK ELEVATION
1/2" = 1'-0"

The West Coast 1250

Elevations



1
46 RIGHT ELEVATION
1/2" = 1'-0"



1
A7 LEFT ELEVATION
1/2" = 1'-0"

The West Coast 1250

WITH BASEMENT

Design



ROOM SCHEDULE			
QUANTITY	ROOM	PERIMETER	AREA
BASEMENT FLOOR PLAN			
1	BATHROOM 3	23' - 10 1/2"	35 SF
1	BATHROOM 4	29' - 1"	48 SF
1	BEDROOM 4	43' - 1 1/2"	93 SF
1	FOYER 1	80' - 11"	114 SF
1	HOME GYM	69' - 4 1/2"	246 SF
1	LAUNDRY	40' - 8"	100 SF
1	LIVING ROOM 2	56' - 8"	196 SF
1	OFFICE NOOK	22' - 6 1/2"	32 SF
MAIN FLOOR			
1	BATHROOM 1	29' - 4"	50 SF
1	BEDROOM 1	39' - 9 1/2"	99 SF
1	BEDROOM 2	39' - 8"	98 SF
1	FOYER	85' - 3"	179 SF
1	KITCHEN	48' - 0"	134 SF
1	LIVING SPACE	69' - 4 1/2"	246 SF
UPPER LEVEL PLAN			
1	BATHROOM 2	33' - 3 1/2"	63 SF
1	MASTER BEDROOM	99' - 2 1/2"	299 SF

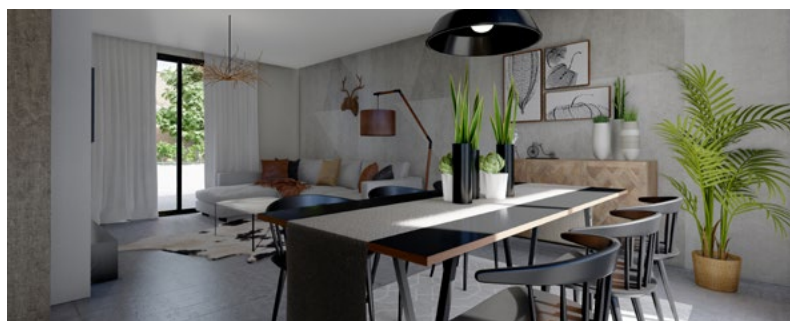
**Kitchen, Living Room,
4 Bedrooms, 4 Bathrooms
(Including Basement)**

2 Storeys

**Interior Living Space:
Main Floor - 914 sq ft
Second Floor - 385 sq ft
Basement - 864 sq ft**

**Approximate Exterior
Dimensions:**

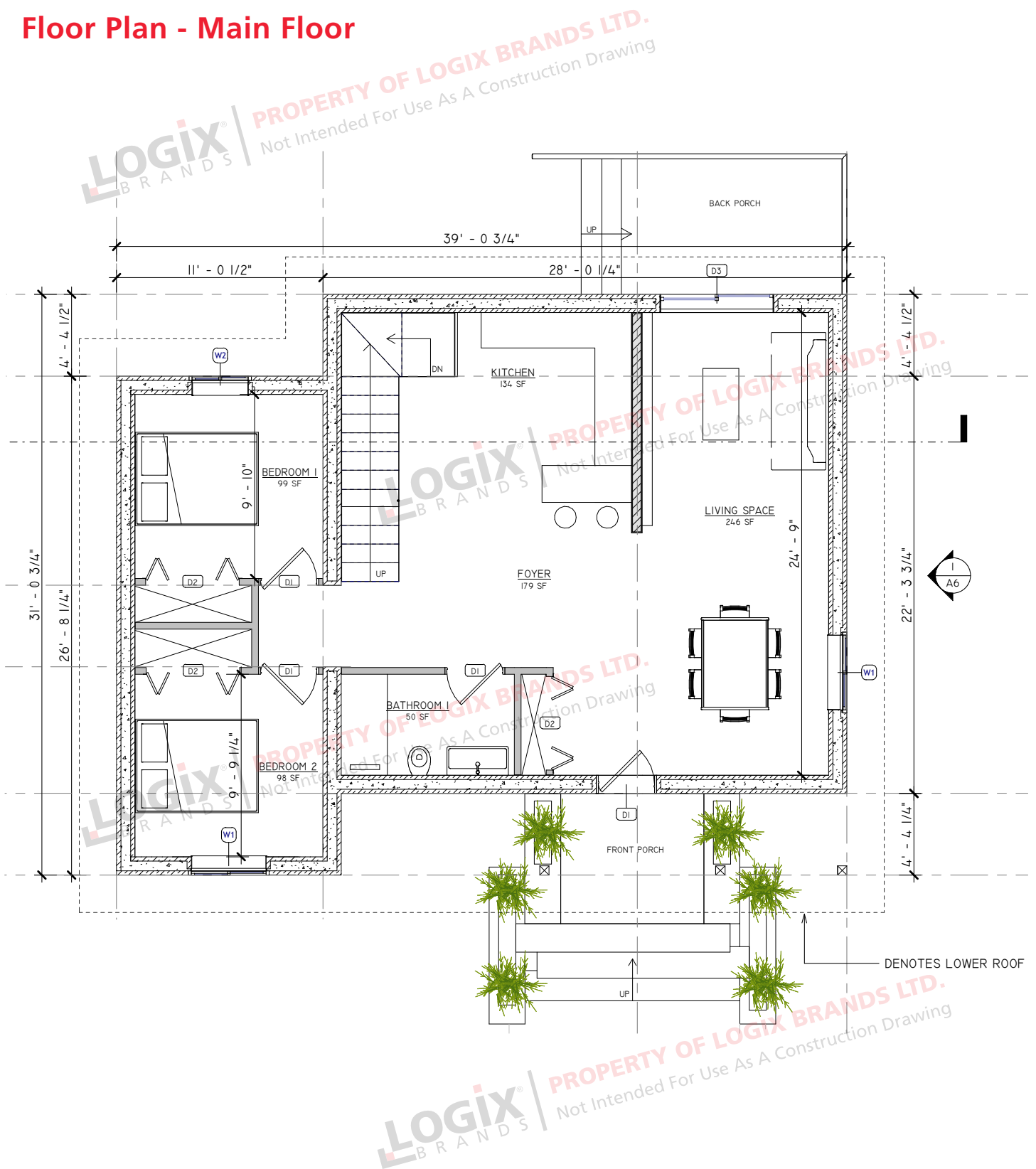
39' W x 31' D



The West Coast 1250

WITH BASEMENT

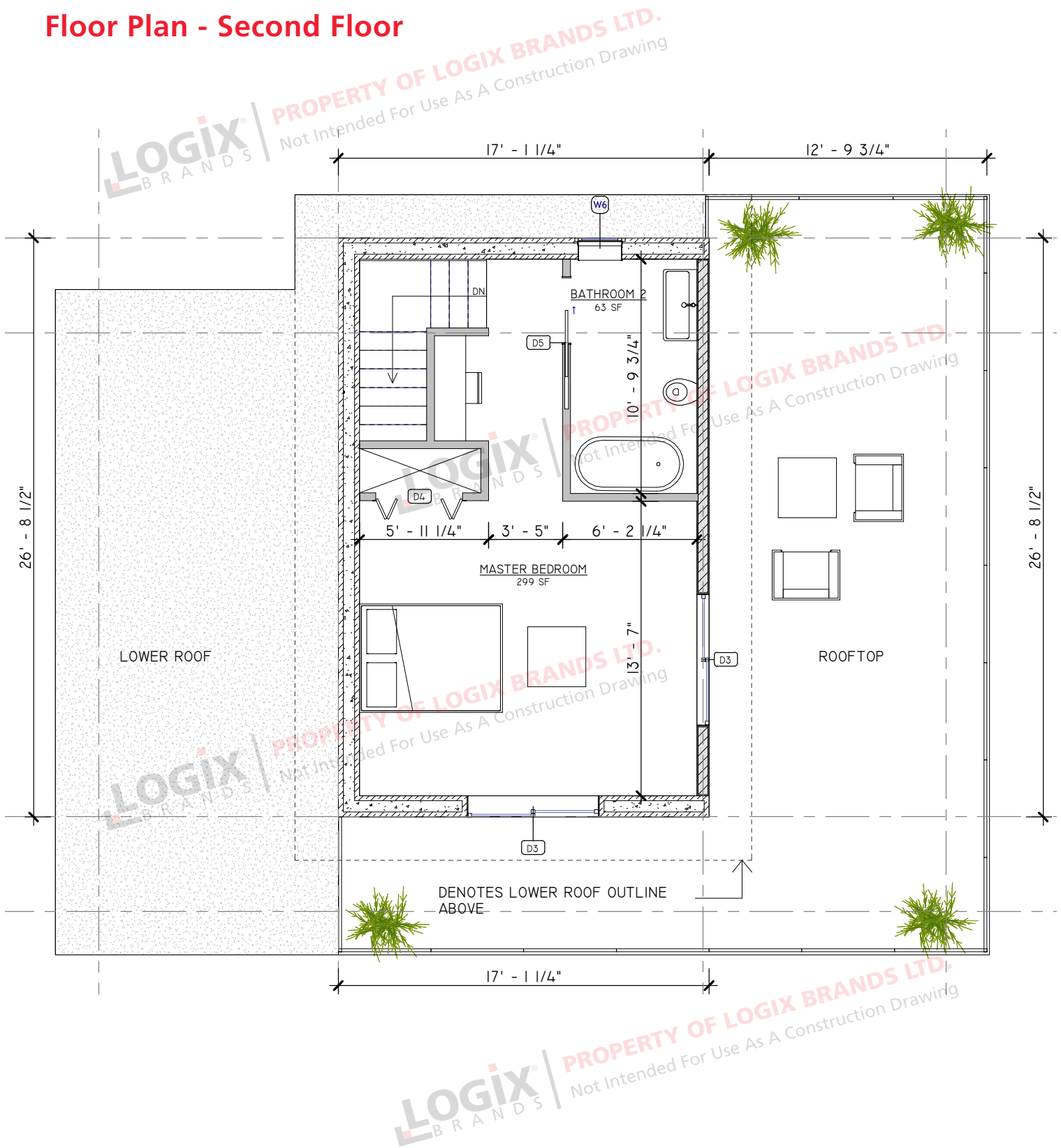
Floor Plan - Main Floor



The West Coast 1250

WITH BASEMENT

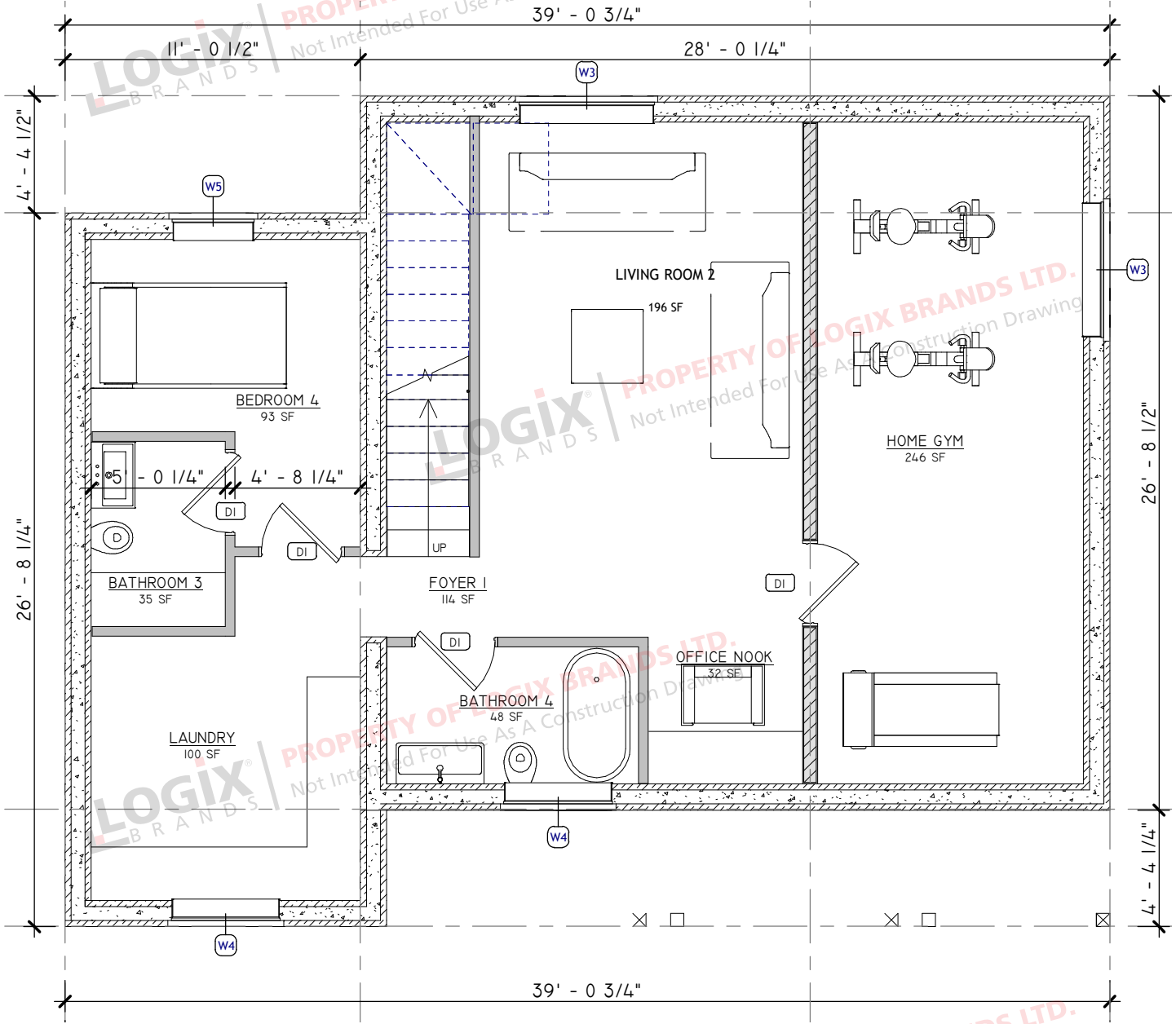
Floor Plan - Second Floor



The West Coast 1250

WITH BASEMENT

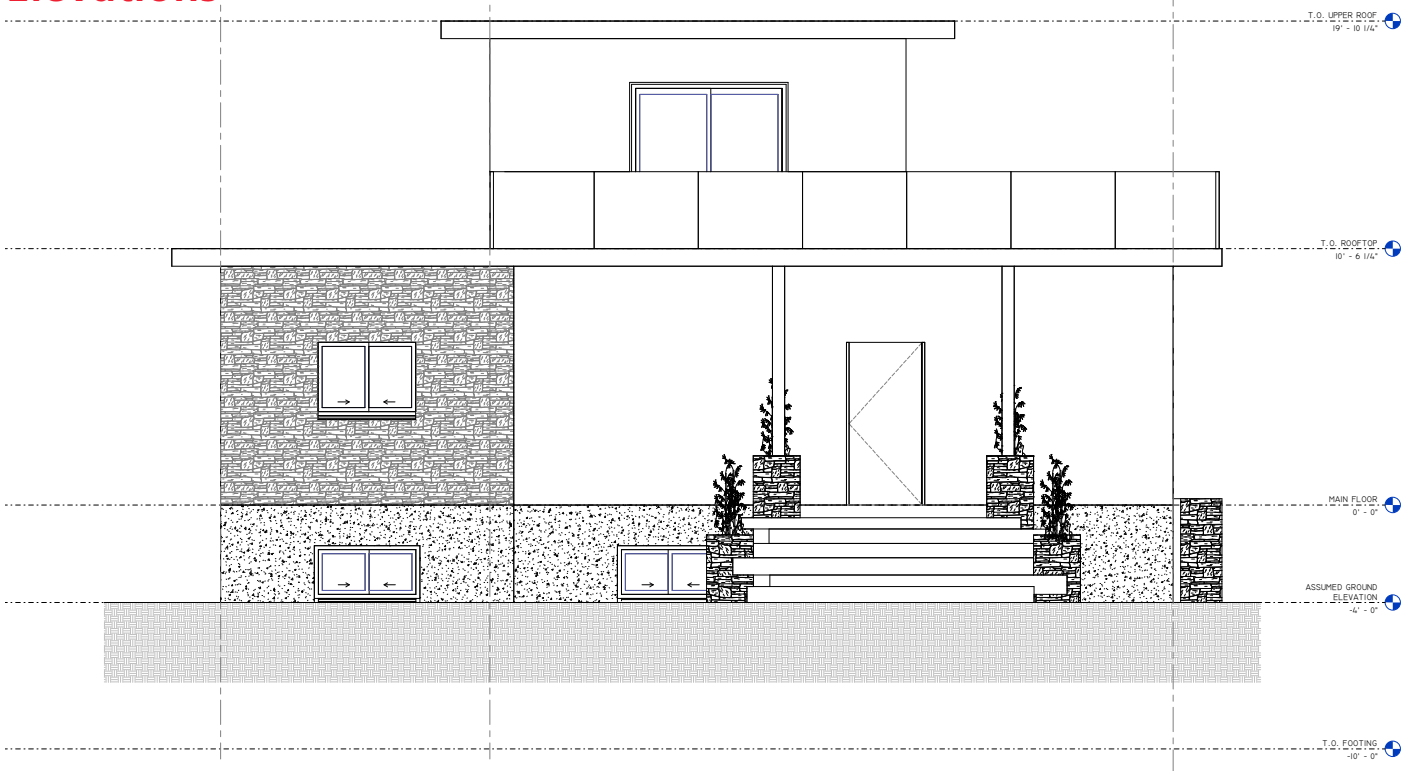
Floor Plan - Basement



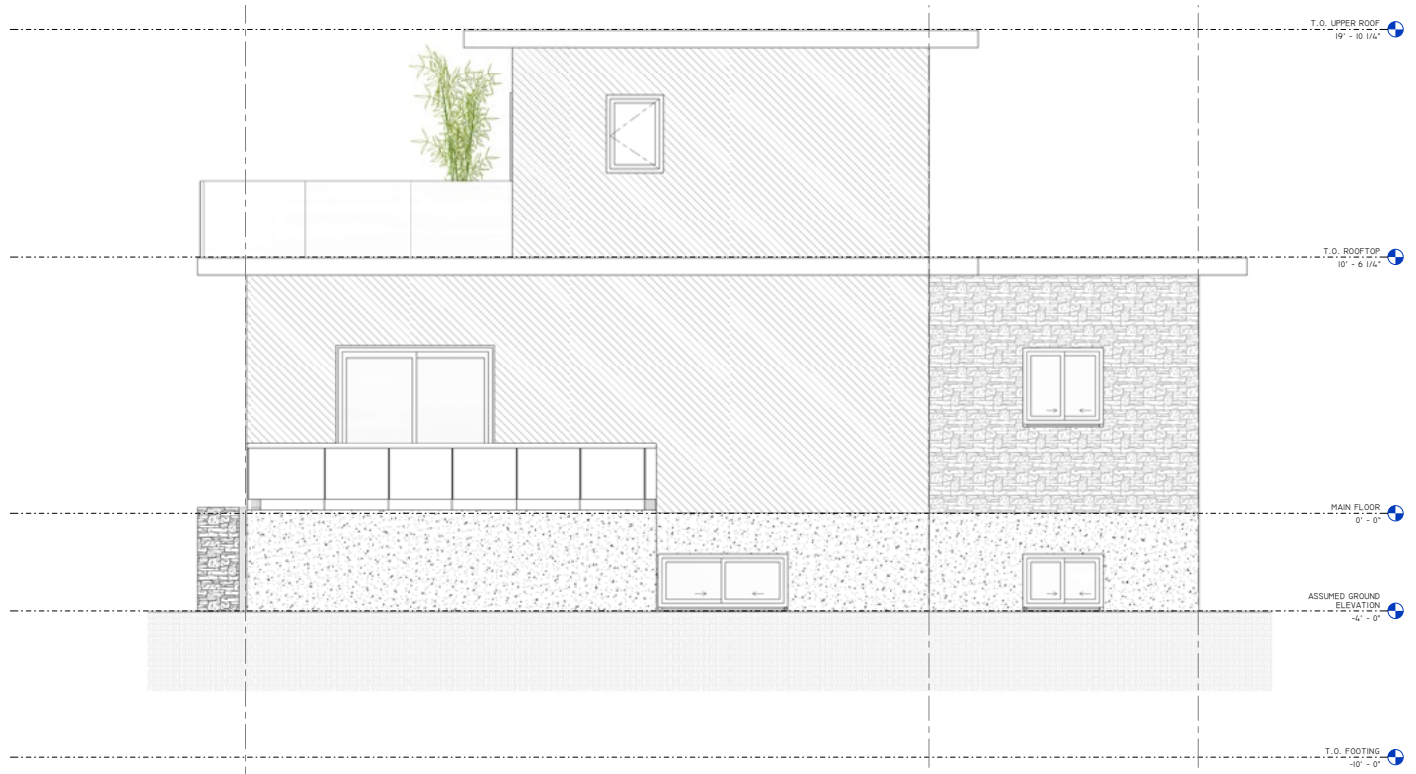
The West Coast 1250

WITH BASEMENT

Elevations



1 FRONT ELEVATION
A4
1/2" = 1'-0"

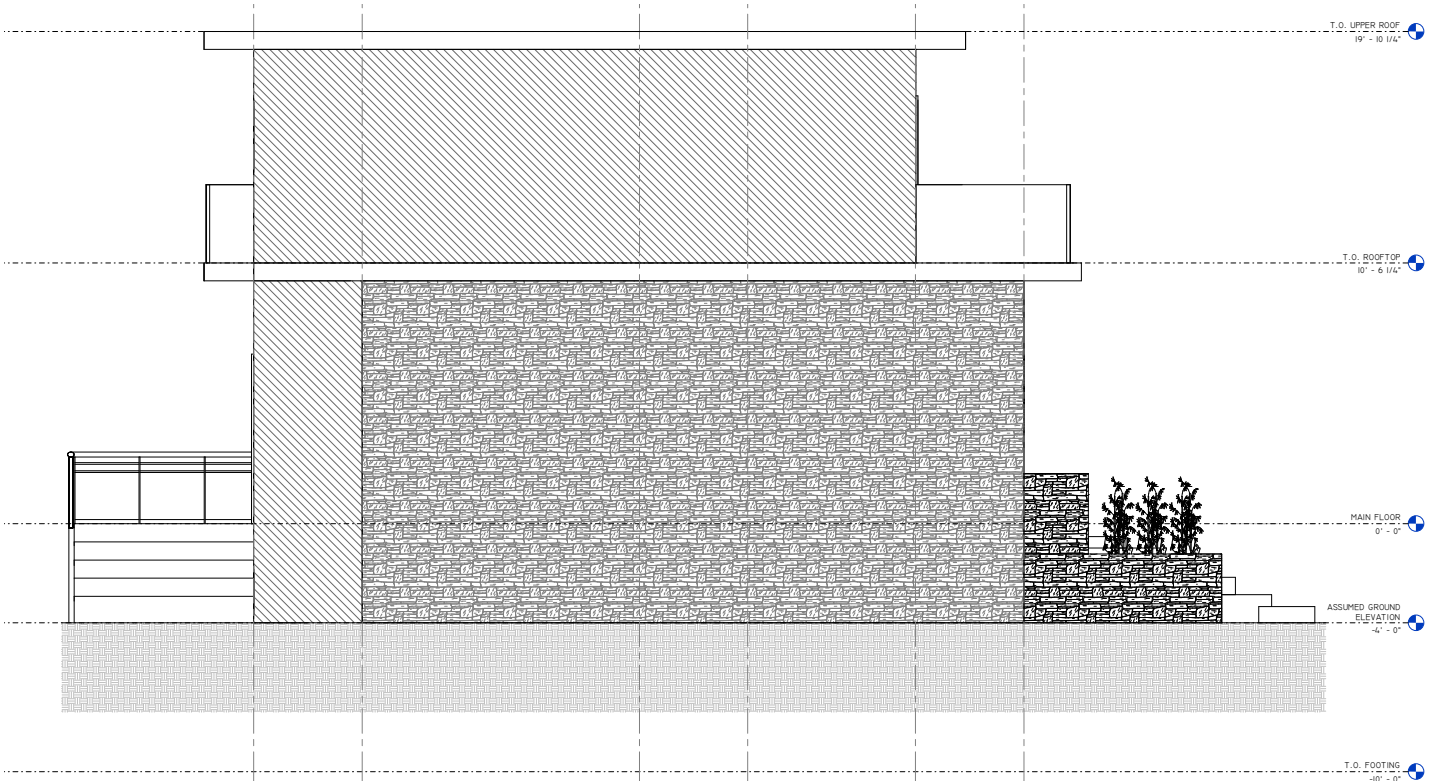
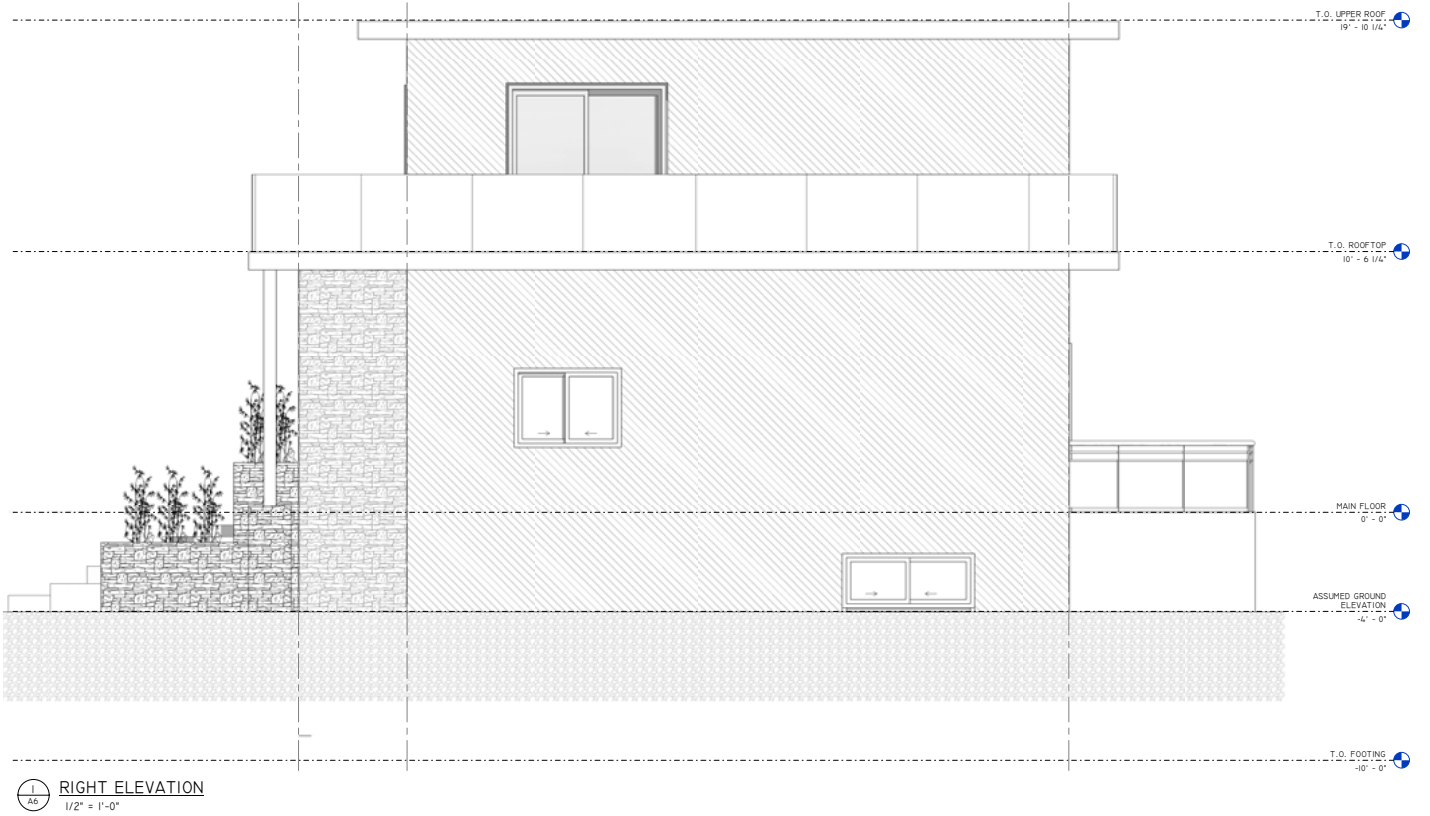


1 BACK ELEVATION
A5
1/2" = 1'-0"

The West Coast 1250

WITH BASEMENT

Elevations





**REQUEST A QUOTE &
ORDER A PLAN SET
BASED ON THIS DESIGN**

Your Logix ICF advisor can refer you to a designer who will provide a quotation for your complete plan set including any required modifications.

Please note that some locations may require specific engineering and/or local code adoptions. Be sure to check with your contractor or local building authority to see what is required for your area.



**CONNECT
WITH A LOCAL
MANUFACTURER**

888.838.5038

330 Cain Drive
Haysville, KS 67060-2004

888.706.7709

840 Division St.
Cobourg, ON K9A 5V2

877.789.7622

35 Headingley Rd.
Headingley, MB R4H 0A8

888.453.5961

11581-272 St.
Acheson, AB T7X 6E9

888.453.5961

6333 Unsworth Rd.
Chilliwack, BC V2R 5M3



info@LogixICF.com
LogixICF.com

A Product By

