



# THE WEST COAST 1100

Design, Floor Plan & Elevations



# The West Coast 1100

## Design



ROOM SCHEDULE			
QUANTITY	ROOM	PERIMETER	AREA
MAIN FLOOR			
1	BATHROOM 1	35' - 2 1/2"	70 SF
1	BEDROOM 1	49' - 3 1/2"	128 SF
1	FOYER	42' - 9"	110 SF
1	KITCHEN AREA	68' - 1"	289 SF
1	LIVING SPACE	54' - 6 1/2"	177 SF
UPPER LEVEL			
1	BATHROOM 2	35' - 2 1/2"	70 SF
1	MASTER BEDROOM	97' - 8"	237 SF



**Kitchen, Living Room,  
2 Bedrooms, 2 Bathrooms**

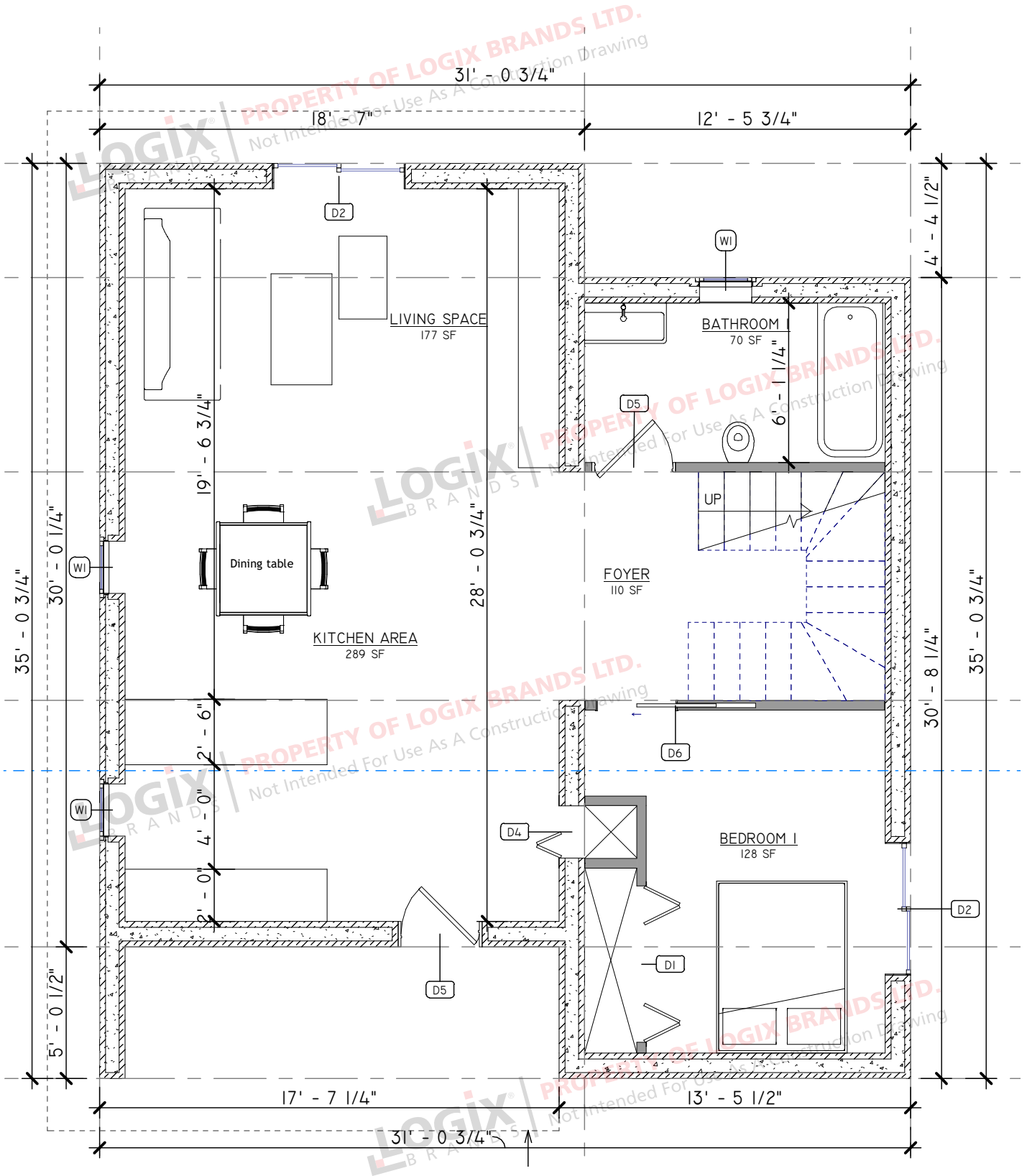
**2 Storeys**

**Interior Living Space:  
1127 sq ft**

**Approximate Exterior  
Dimensions:  
31' W x 35' D**

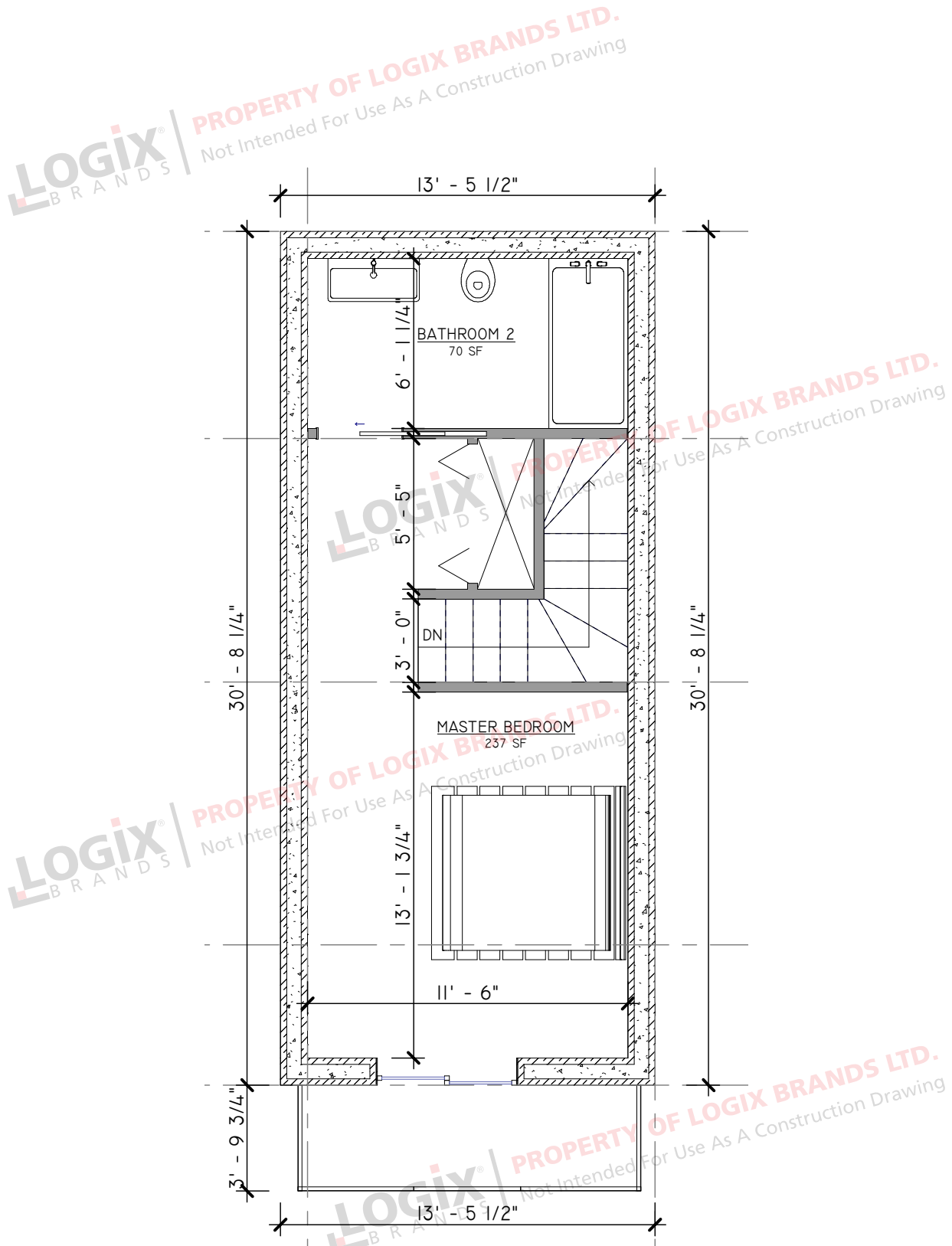
# The West Coast 1100

## Floor Plan - Main Level



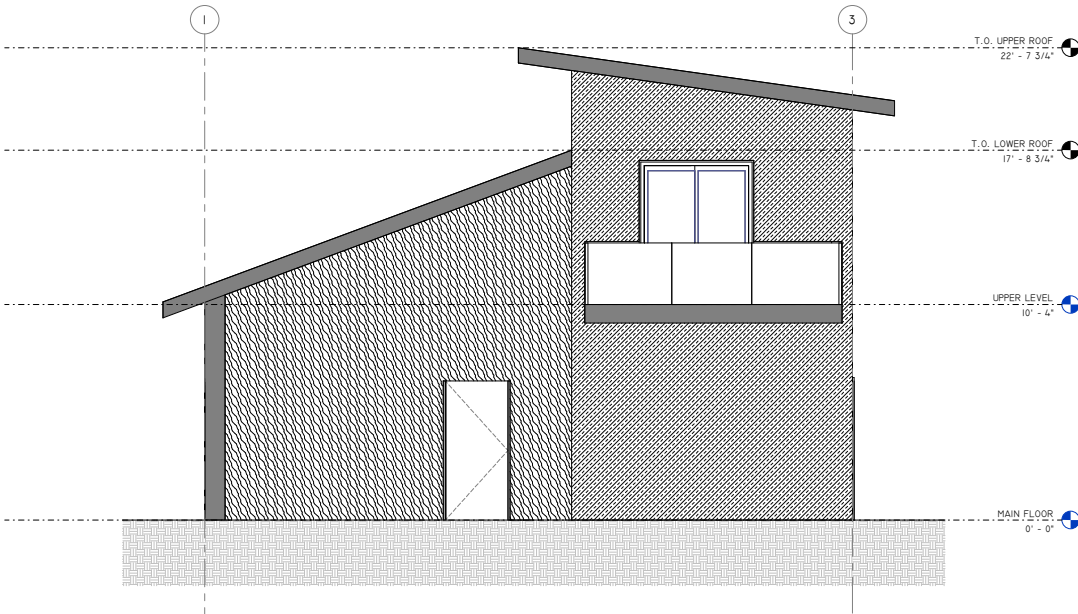
# The West Coast 1100

## Floor Plan - Second Level

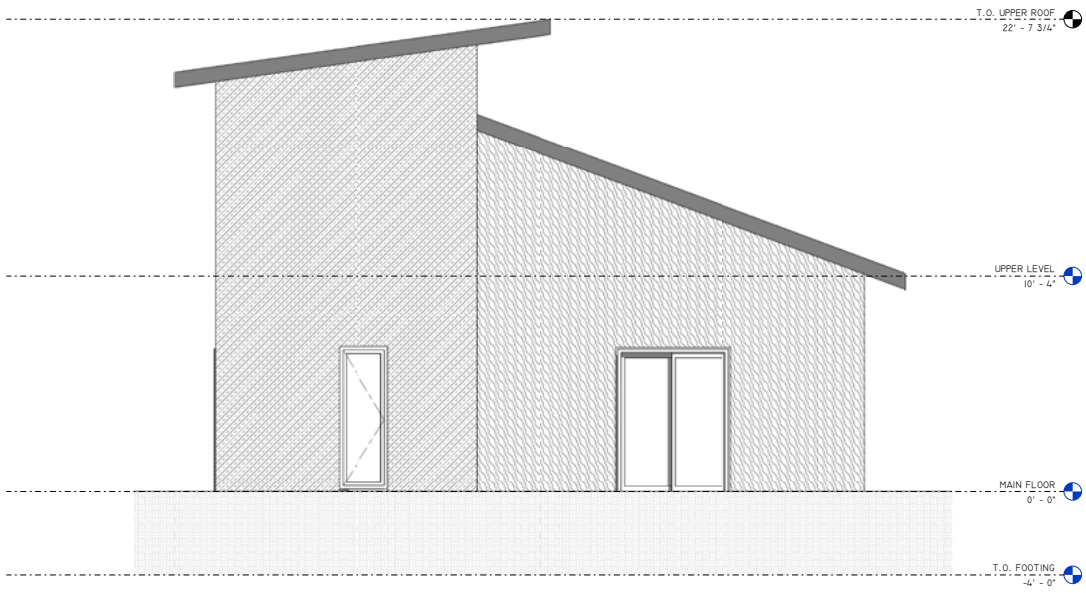


# The West Coast 1100

## Elevations



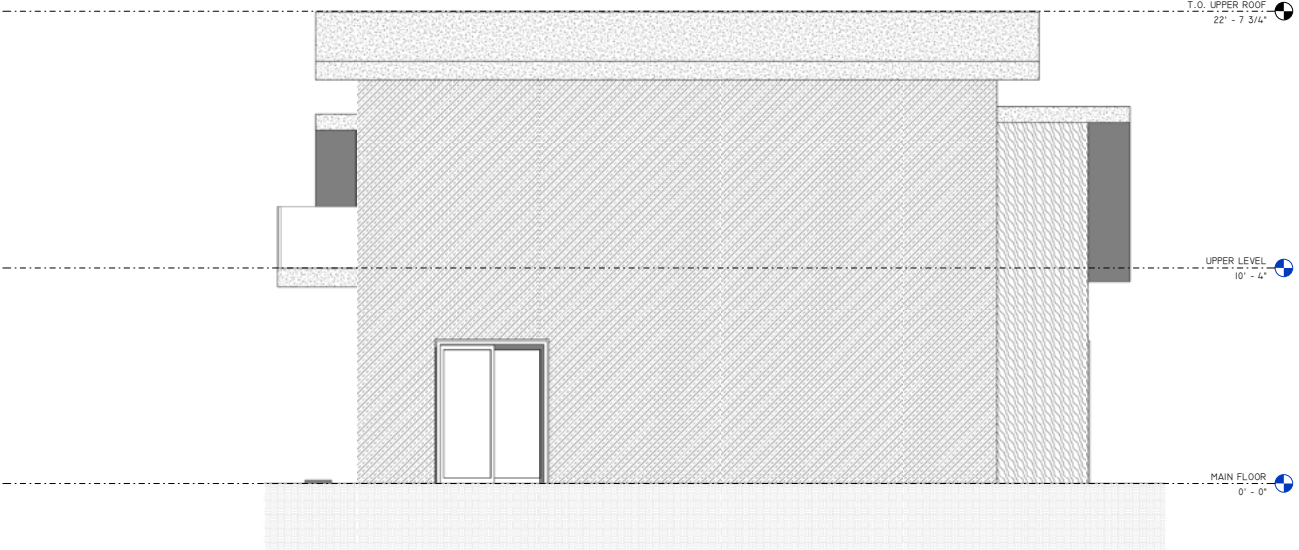
1  
A4  
**FRONT ELEVATION**  
3/8" = 1'-0"



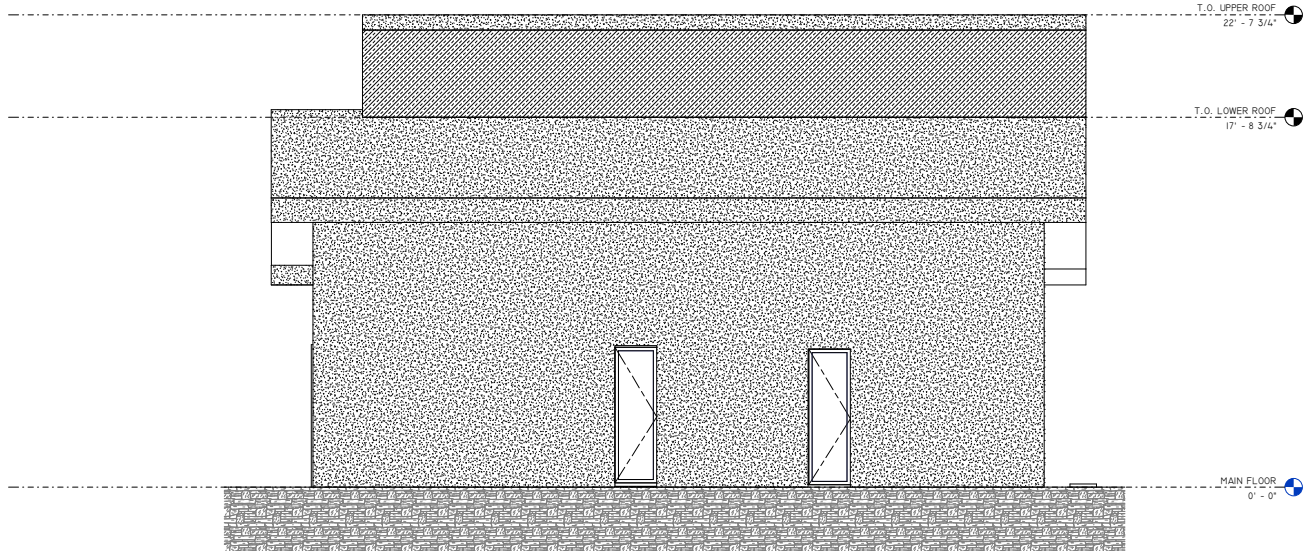
1  
A5  
**BACK ELEVATION**  
3/8" = 1'-0"

# The West Coast 1100

## Elevations



1  
46 RIGHT ELEVATION  
3/8" = 1'-0"



1  
47 LEFT ELEVATION  
3/8" = 1'-0"

# The West Coast 1100

WITH BASEMENT

Design



ROOM SCHEDULE			
QUANTITY	ROOM	PERIMETER	AREA
BASEMENT			
1	BATHROOM 3	35' - 2 1/2"	70 SF
1	BATHROOM 5	26' - 4"	41 SF
1	BEDROOM 3	54' - 2 1/2"	153 SF
1	BEDROOM 5	63' - 1"	178 SF
1	FOYER	51' - 2 1/2"	147 SF
1	LAUNDRY	49' - 4"	151 SF
MAIN FLOOR			
1	BATHROOM 1	35' - 2 1/2"	70 SF
1	BEDROOM 1	49' - 3 1/2"	133 SF
1	FOYER 1	42' - 9"	110 SF
1	KITCHEN AREA	68' - 1"	289 SF
1	LIVING SPACE	54' - 6 1/2"	177 SF
UPPER FLOOR			
1	BATHROOM 2	47' - 2 1/2"	70 SF
1	MASTER BEDROOM	96' - 3"	237 SF

**Kitchen, Living Room,  
4 Bedrooms, 4 Bathrooms  
(Including Basement)**

**2 Storeys**

**Interior Living Space:  
Main Floor - 820 sq ft  
Second Floor - 330 sq ft  
Basement - 740 sq ft**

**Approximate Exterior  
Dimensions:**

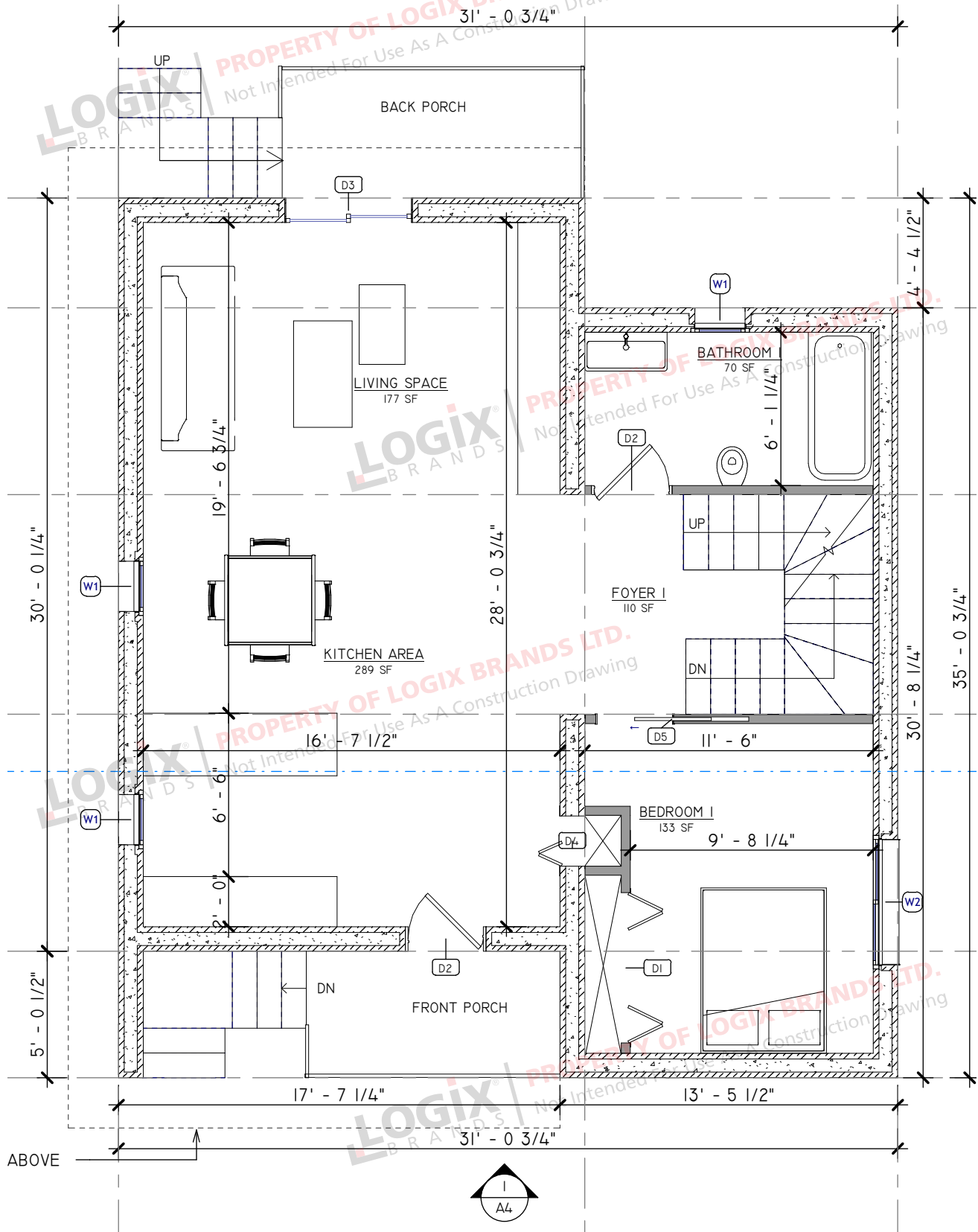
**31' W x 35' D**



# The West Coast 1100

WITH BASEMENT

Floor Plan - Main Floor

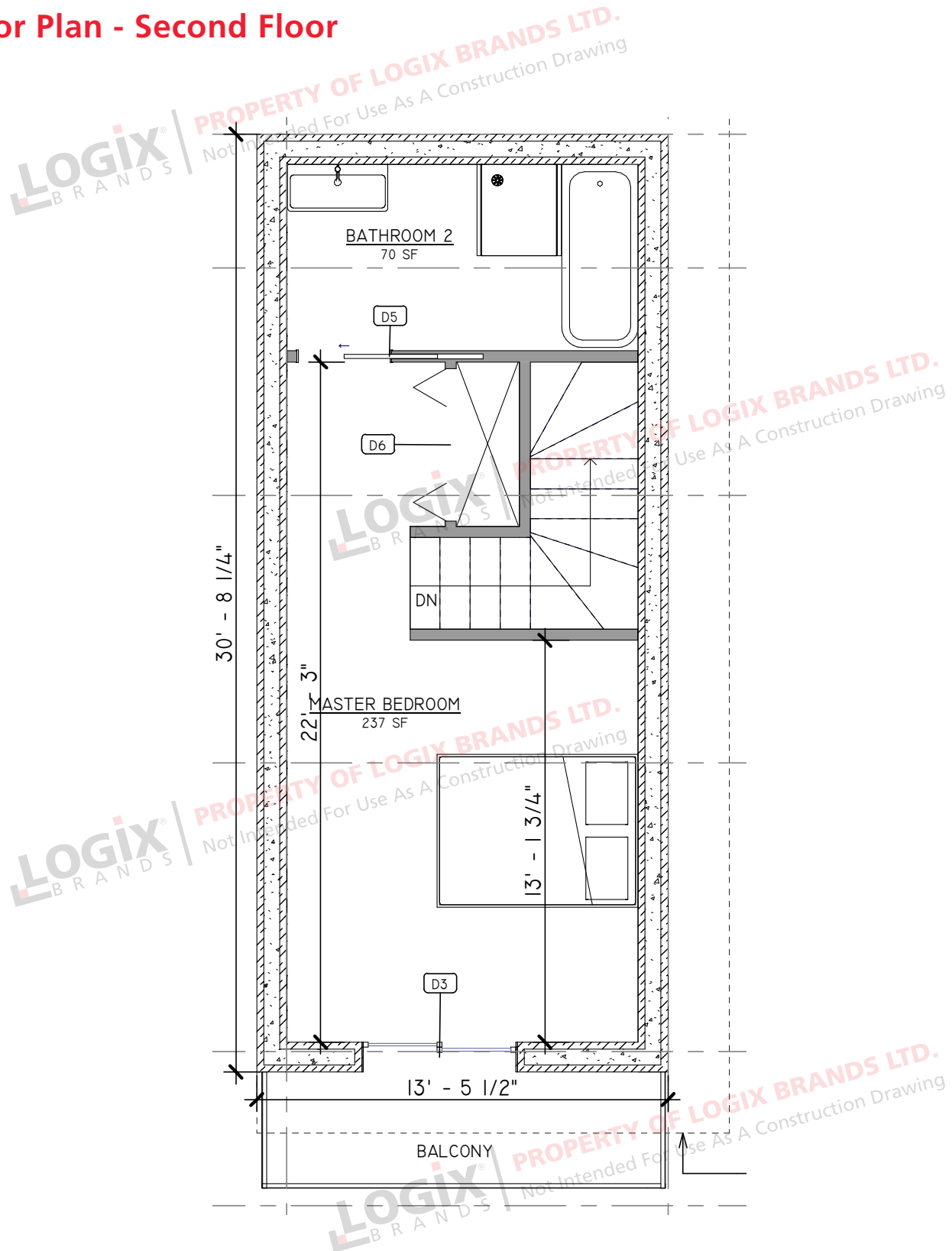




# The West Coast 1100

WITH BASEMENT

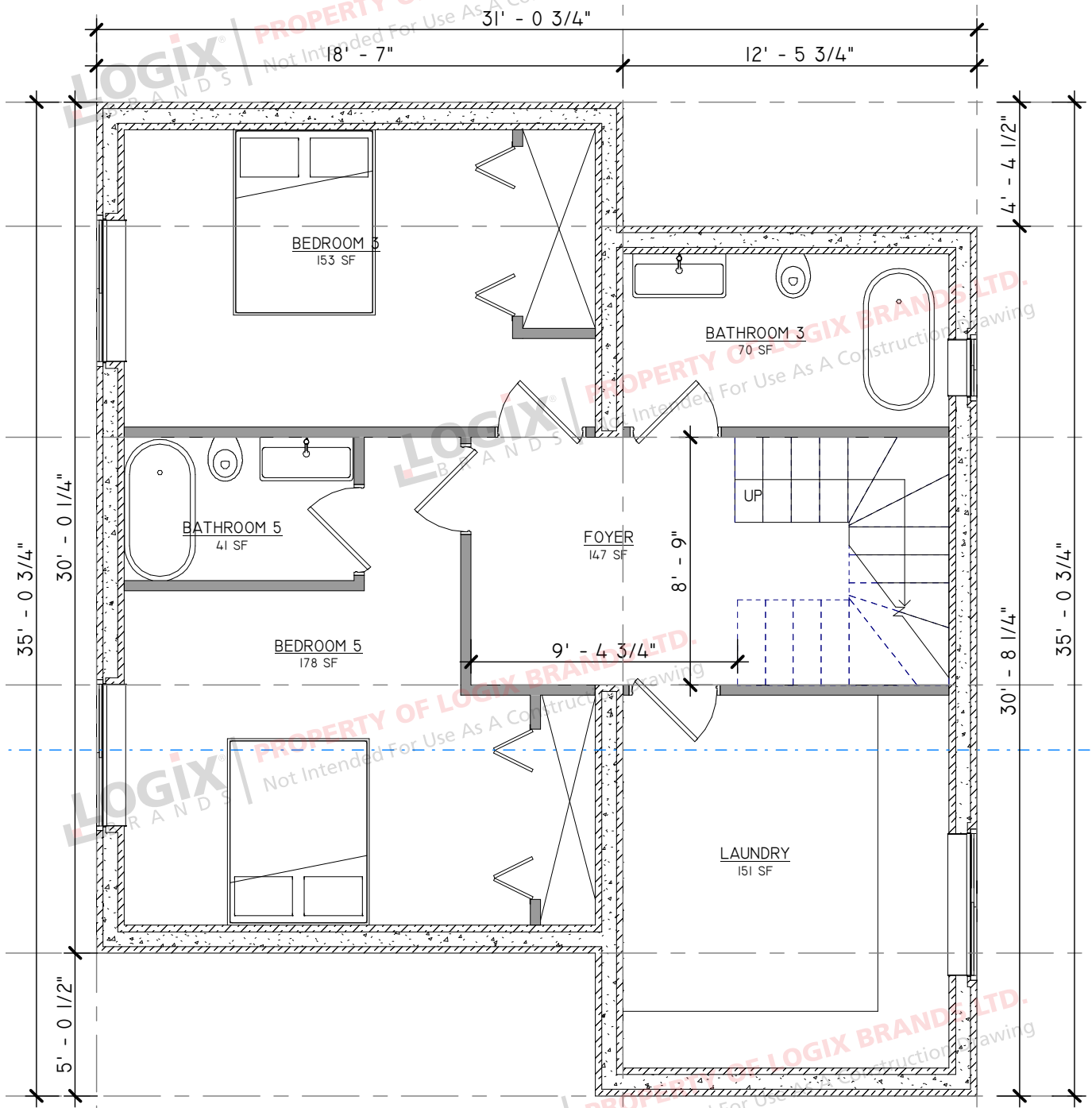
Floor Plan - Second Floor



# The West Coast 1100

WITH BASEMENT

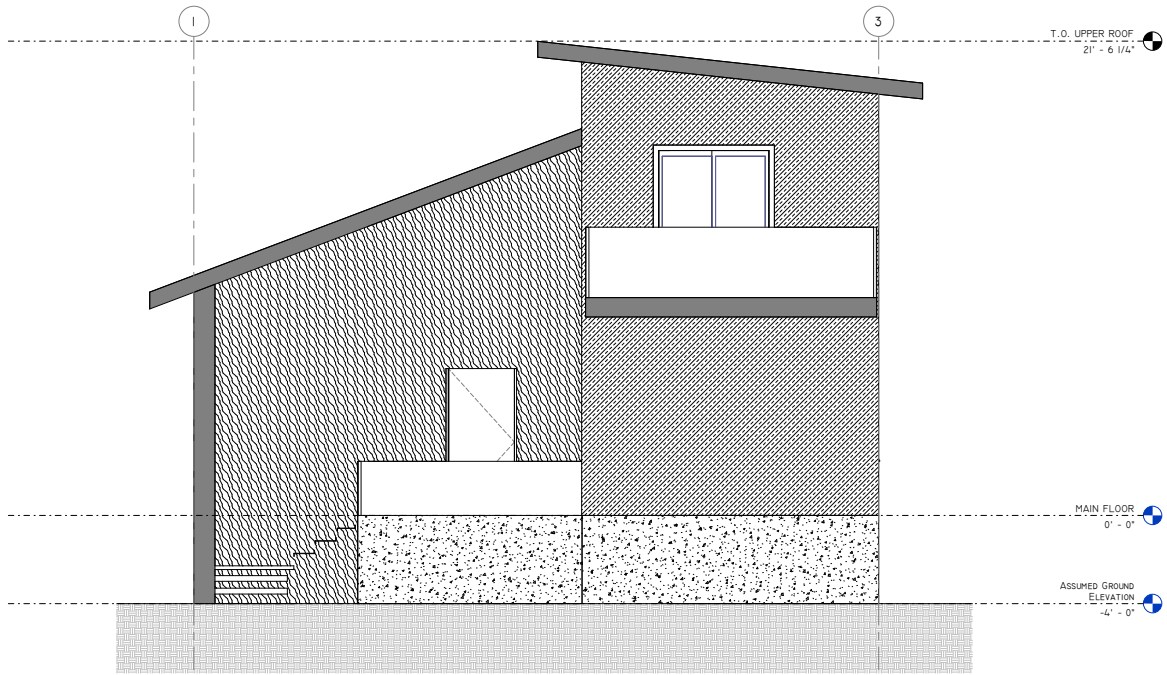
Floor Plan - Basement



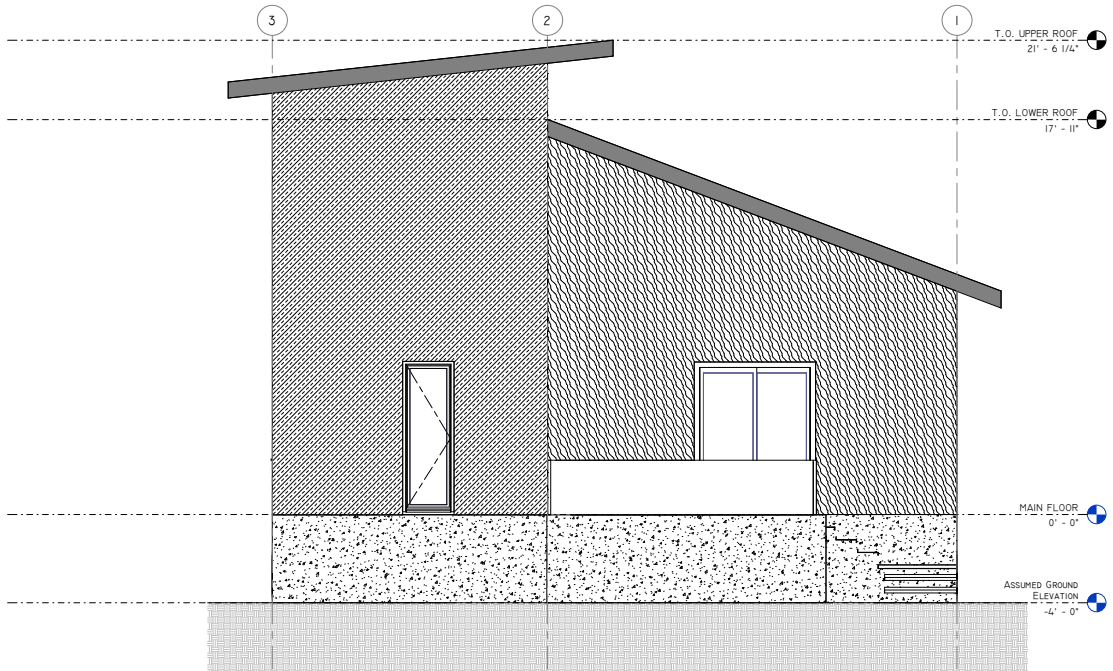
# The West Coast 1100

WITH BASEMENT

Elevations



1  
A4 FRONT ELEVATION  
3/8" = 1'-0"

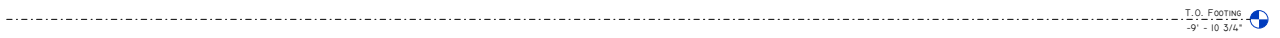
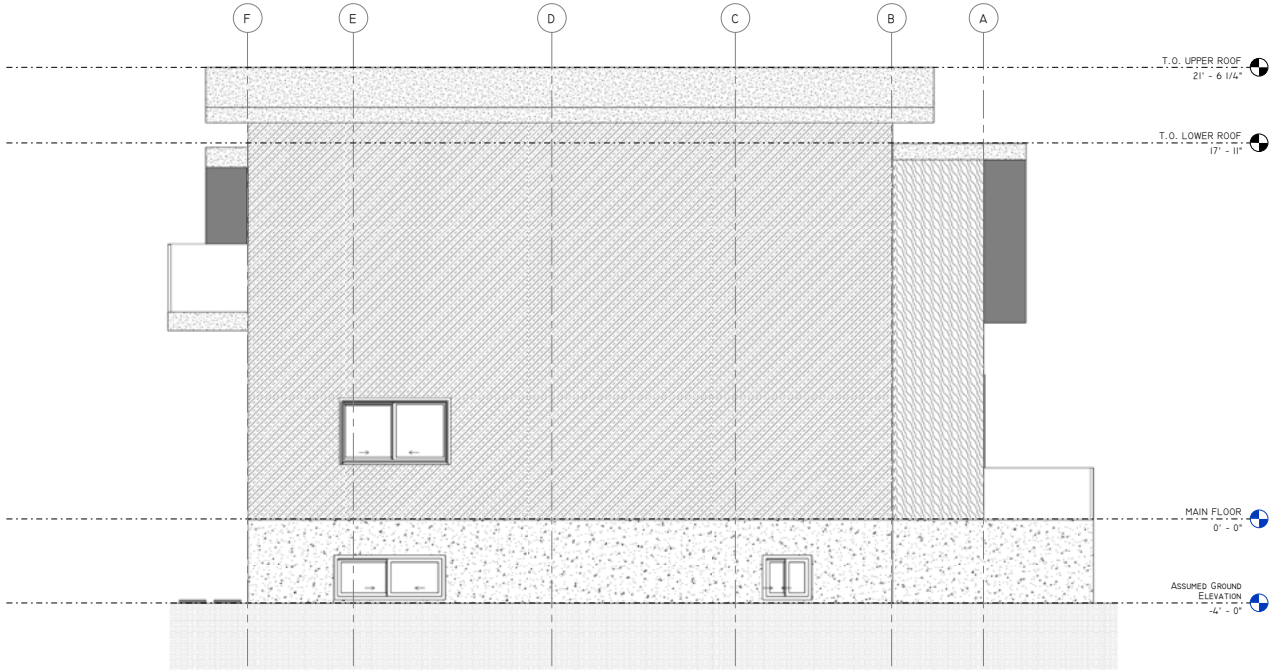


1  
A5 BACK ELEVATION  
3/8" = 1'-0"

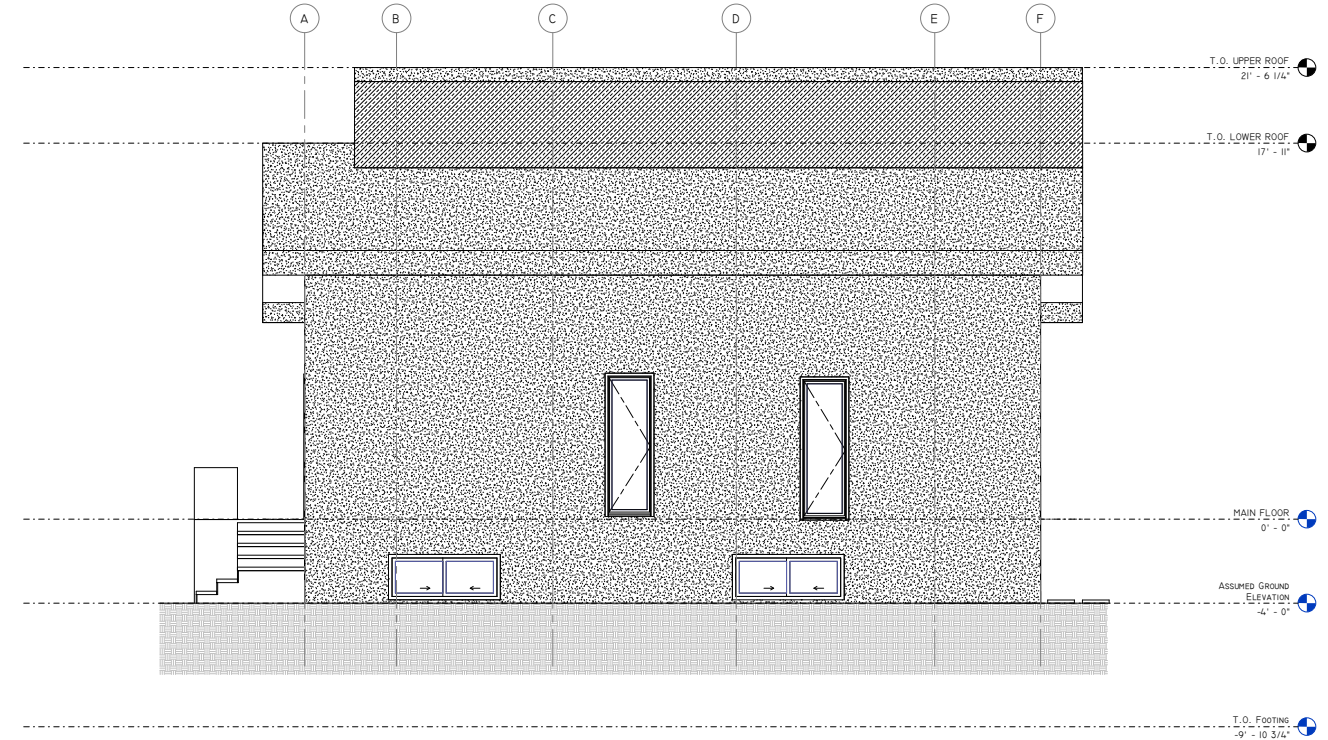
# The West Coast 1100

WITH BASEMENT

## Elevations



**RIGHT ELEVATION**  
3/8" = 1'-0"



**LEFT ELEVATION**  
3/8" = 1'-0"



**REQUEST A QUOTE &  
ORDER A PLAN SET  
BASED ON THIS DESIGN**

Your Logix ICF advisor can refer you to a designer who will provide a quotation for your complete plan set including any required modifications.

Please note that some locations may require specific engineering and/or local code adoptions. Be sure to check with your contractor or local building authority to see what is required for your area.



**CONNECT  
WITH A LOCAL  
MANUFACTURER**

**888.838.5038**

330 Cain Drive  
Haysville, KS 67060-2004

**888.706.7709**

840 Division St.  
Cobourg, ON K9A 5V2

**877.789.7622**

35 Headingley Rd.  
Headingley, MB R4H 0A8

**888.453.5961**

11581-272 St.  
Acheson, AB T7X 6E9

**888.453.5961**

6333 Unsworth Rd.  
Chilliwack, BC V2R 5M3



[info@LogixICF.com](mailto:info@LogixICF.com)  
[LogixICF.com](http://LogixICF.com)

A Product By

