



THE HEARTLAND 950

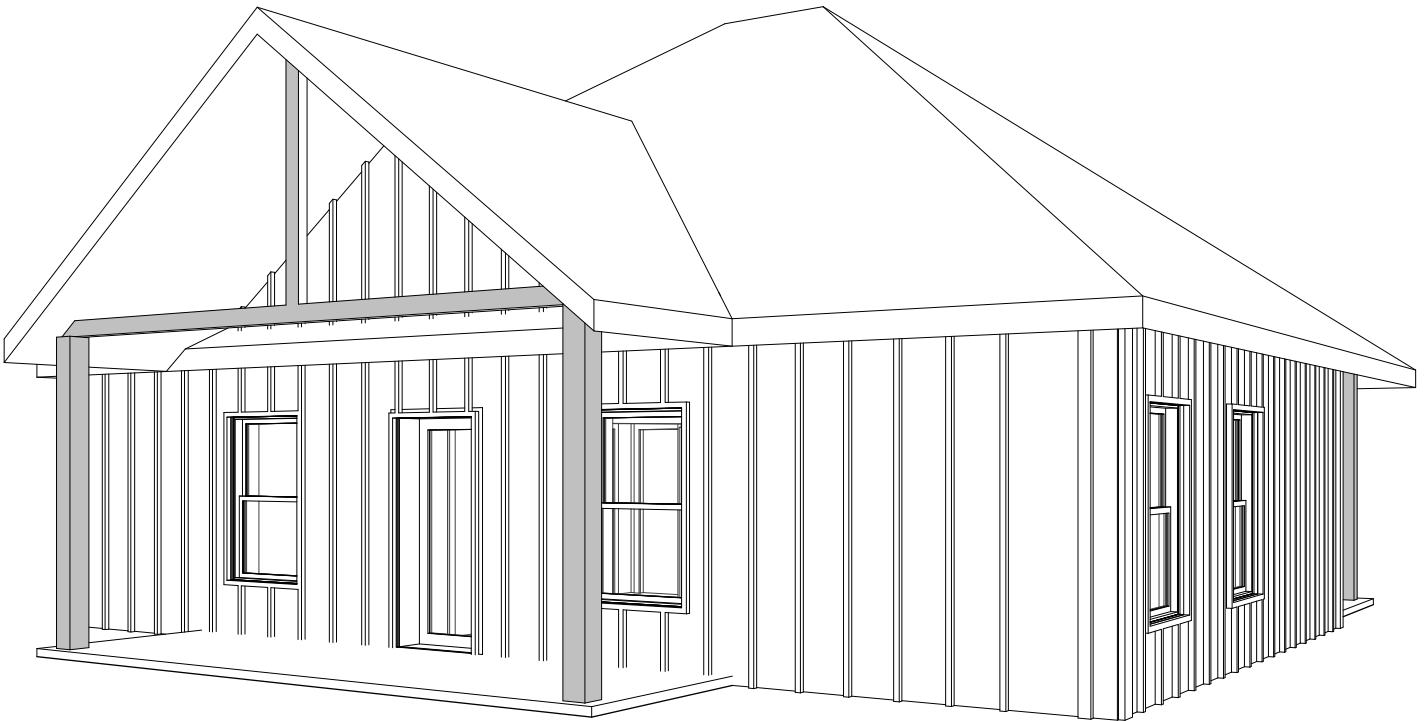
Design, Floor Plan & Elevations



The drawings and images contained in these pages are current at the time of printing. However, the drawings and images may differ slightly when final plan sets are requested, as designs are subject to change.

The Heartland 950

Design



ROOM SCHEDULE			
Name	Level	Area	Perimeter
MASTER SUITE	FIRST FLOOR	246 SF	75' - 1"
BEDROOM 2	FIRST FLOOR	116 SF	43' - 6"
HALL	FIRST FLOOR	58 SF	34' - 10 1/4"
M. BATH	FIRST FLOOR	58 SF	36' - 5 1/2"
W.I.C.	FIRST FLOOR	21 SF	18' - 7"
BATH	FIRST FLOOR	35 SF	23' - 9 3/8"
KITCHEN	FIRST FLOOR	145 SF	49' - 9 3/4"
LIVING	FIRST FLOOR	228 SF	61' - 8 5/8"



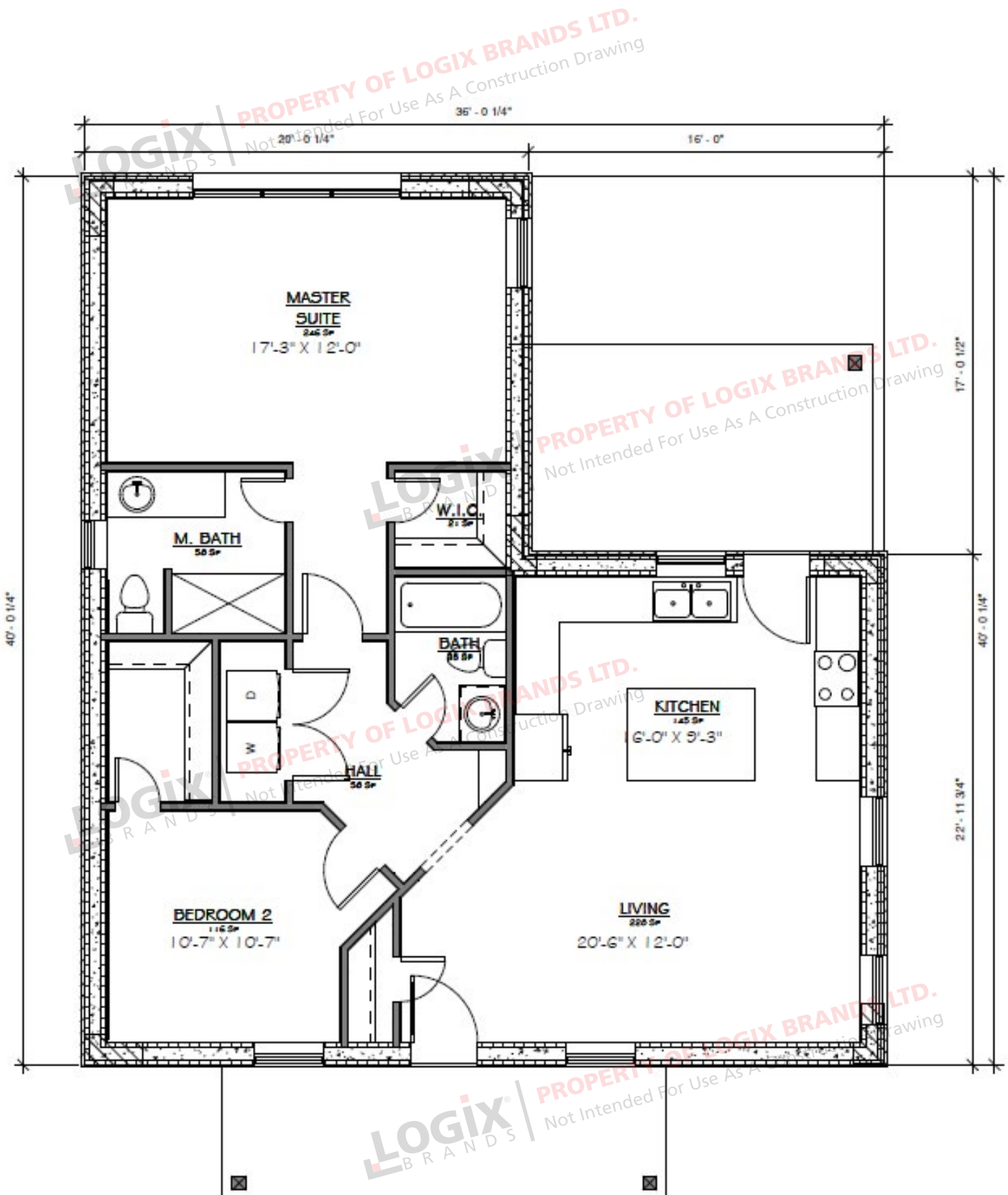
**Kitchen, Living Room,
2 Bedrooms, 2 Bathrooms**

**Interior Living Space:
907 sq ft**

**Approximate Exterior
Dimensions:
36' W x 40' D**

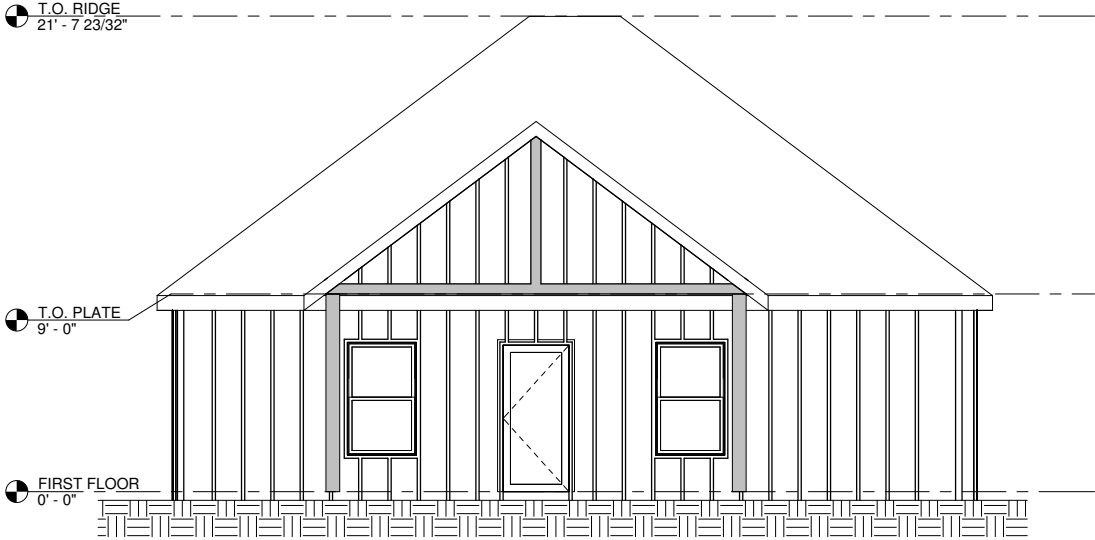
The Heartland 950

Floor Plan

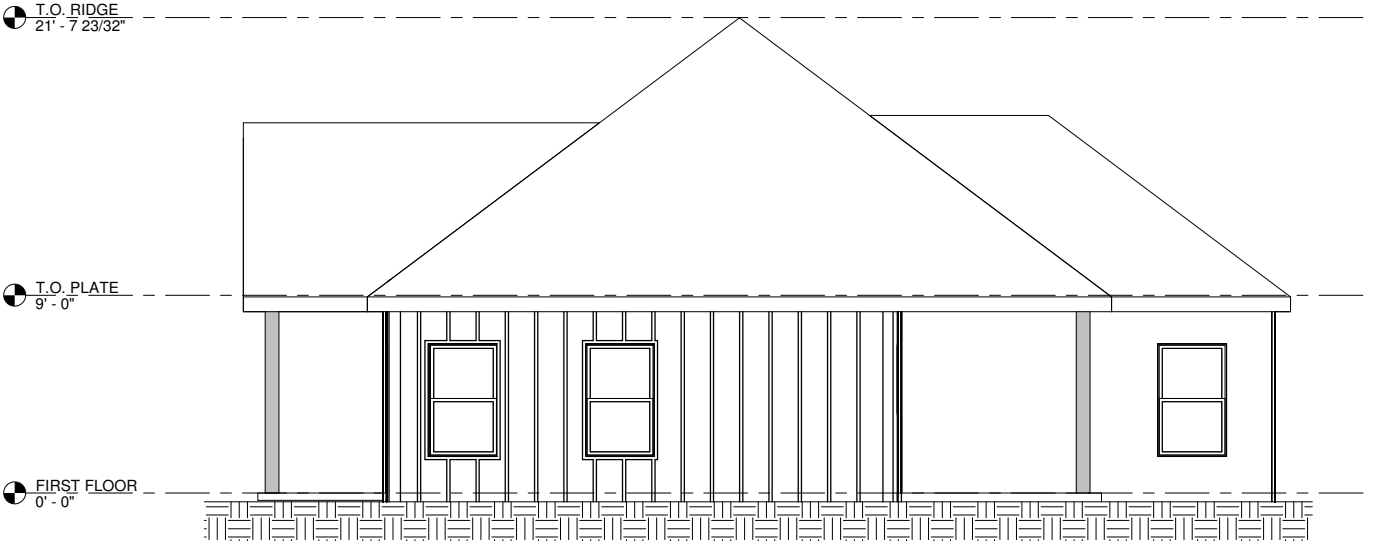


The Heartland 950

Elevations



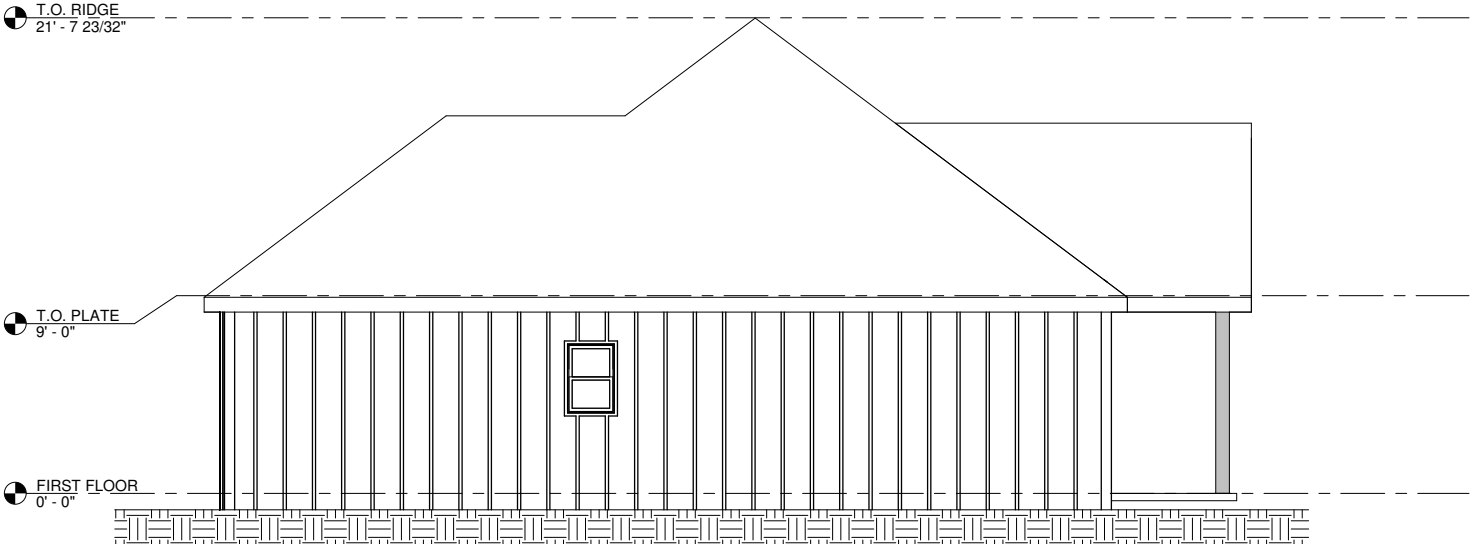
FRONT ELEVATION



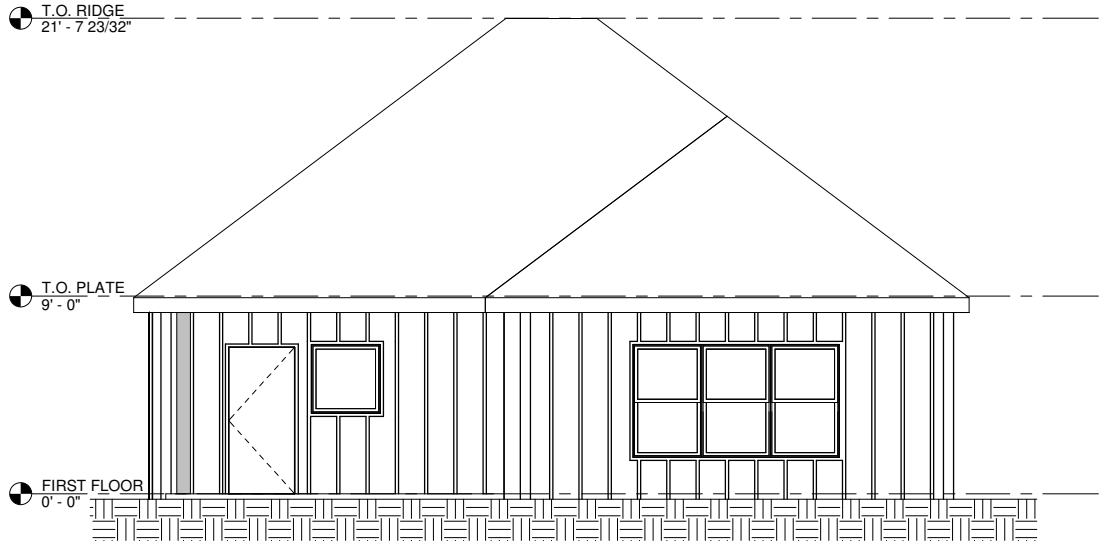
RIGHT ELEVATION

The Heartland 950

Elevations



LEFT ELEVATION

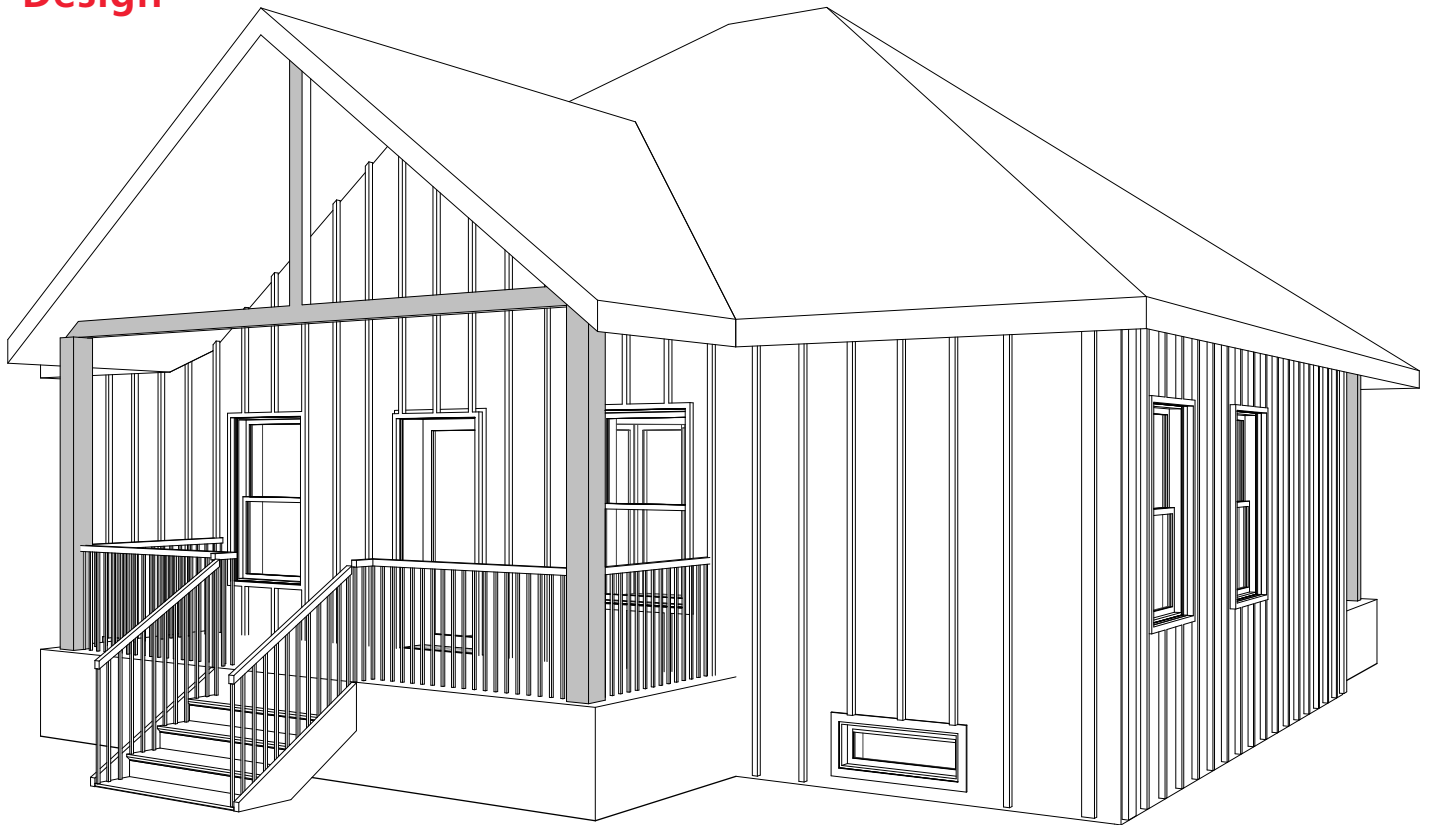


BACK ELEVATION

The Heartland 950

WITH BASEMENT

Design



ROOM SCHEDULE			
Name	Level	Area	Perimeter
MASTER SUITE	FIRST FLOOR	246 SF	75' - 1"
BEDROOM 2	FIRST FLOOR	116 SF	43' - 6"
HALL	FIRST FLOOR	105 SF	59' - 6 1/4"
M. BATH	FIRST FLOOR	58 SF	36' - 5 1/2"
W.I.C.	FIRST FLOOR	21 SF	18' - 7"
BATH	FIRST FLOOR	35 SF	23' - 9 3/8"
KITCHEN	FIRST FLOOR	145 SF	49' - 9 3/4"
LIVING	FIRST FLOOR	228 SF	61' - 8 5/8"
BASEMENT	BASEMENT	691 SF	108' - 1 5/8"



**Kitchen, Living Room,
2 Bedrooms, 2 Bathrooms**

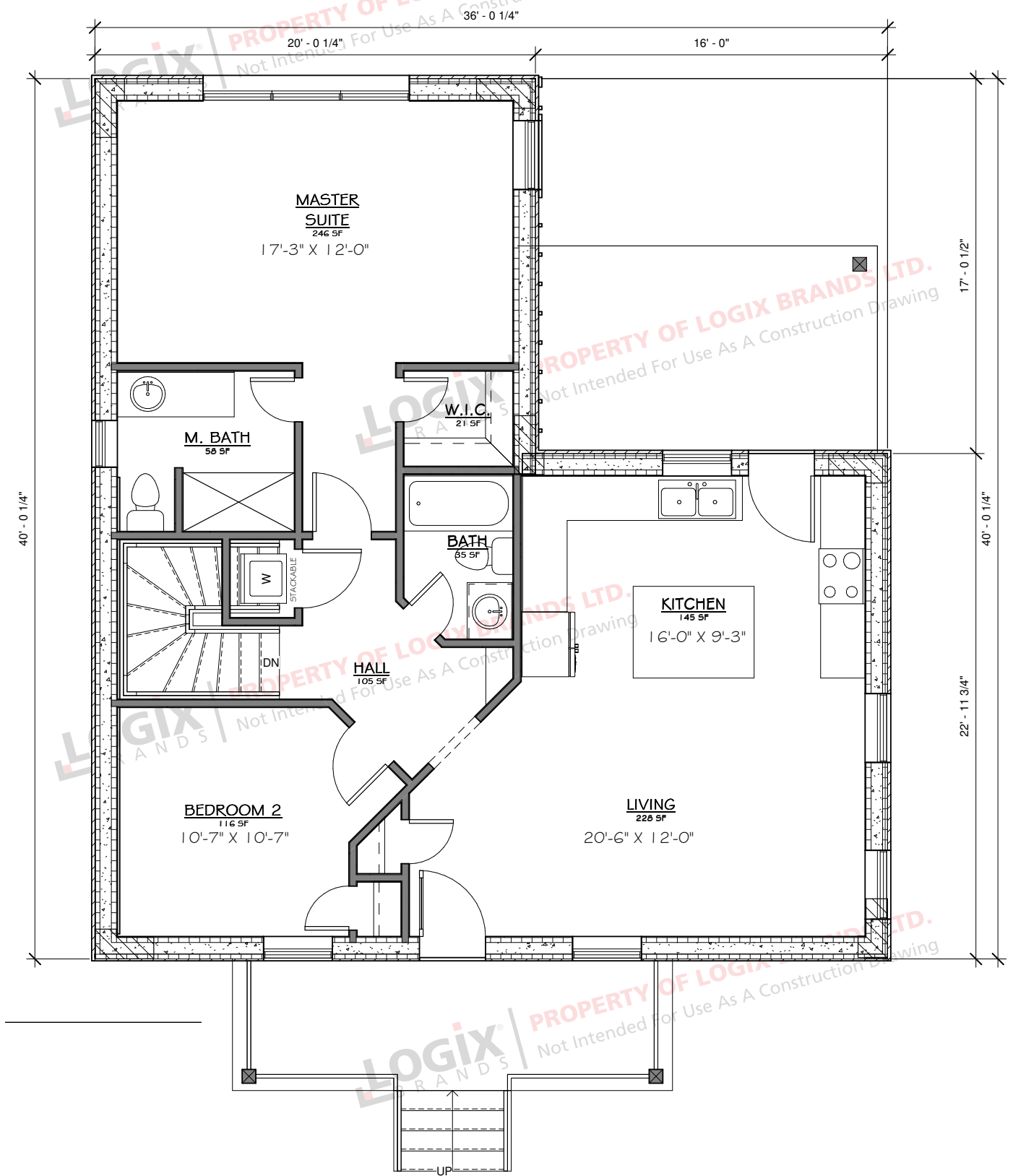
**Interior Living Space:
954 sq ft**

**Approximate Exterior
Dimensions:
36' W x 40' D**

The Heartland 950

WITH BASEMENT

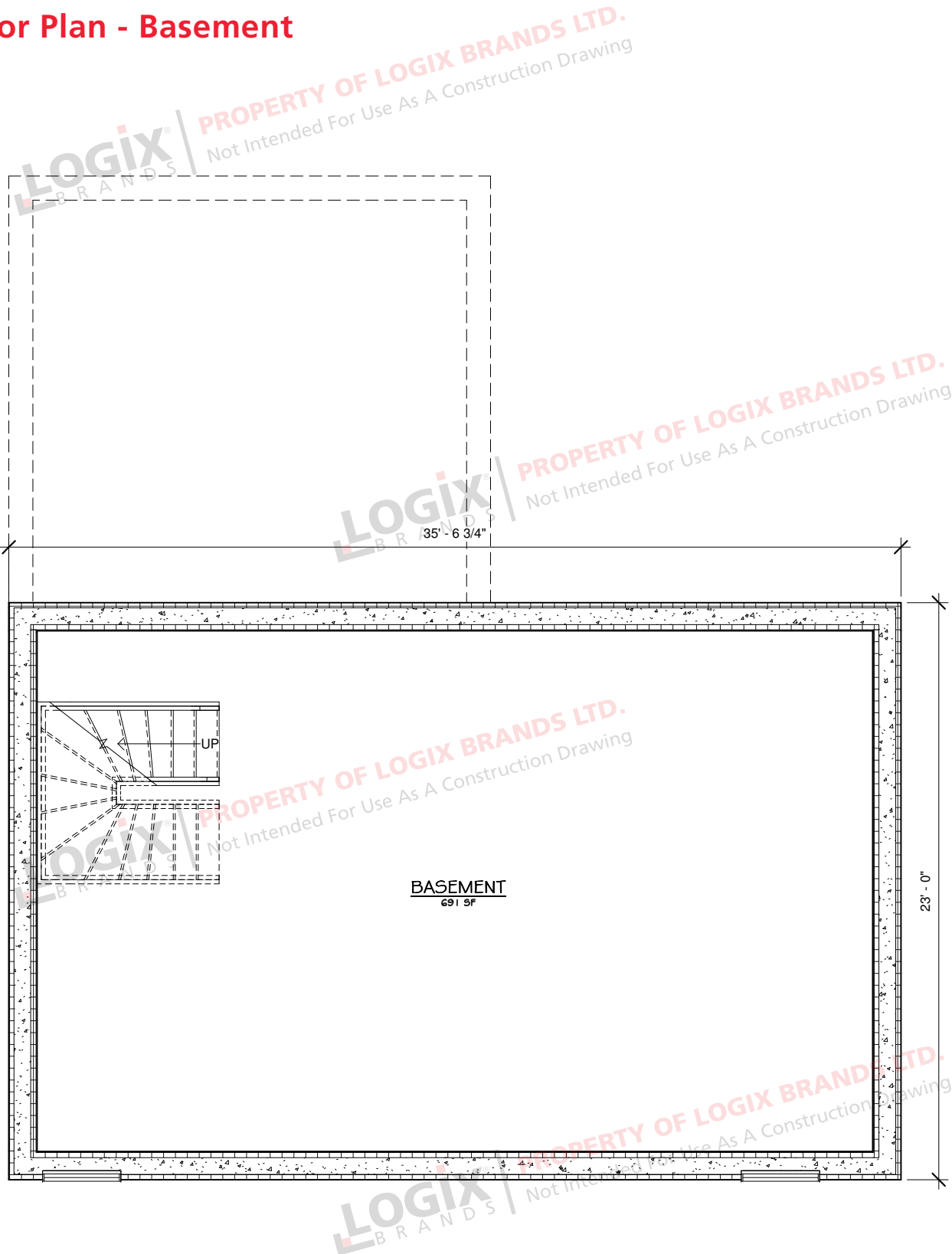
Floor Plan - Main Level



The Heartland 950

WITH BASEMENT

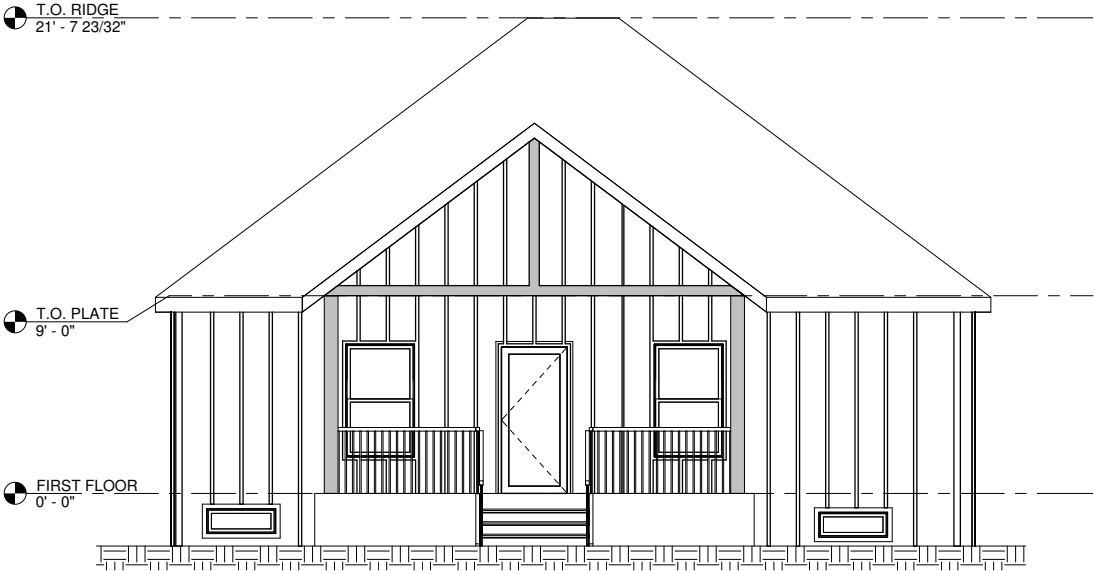
Floor Plan - Basement



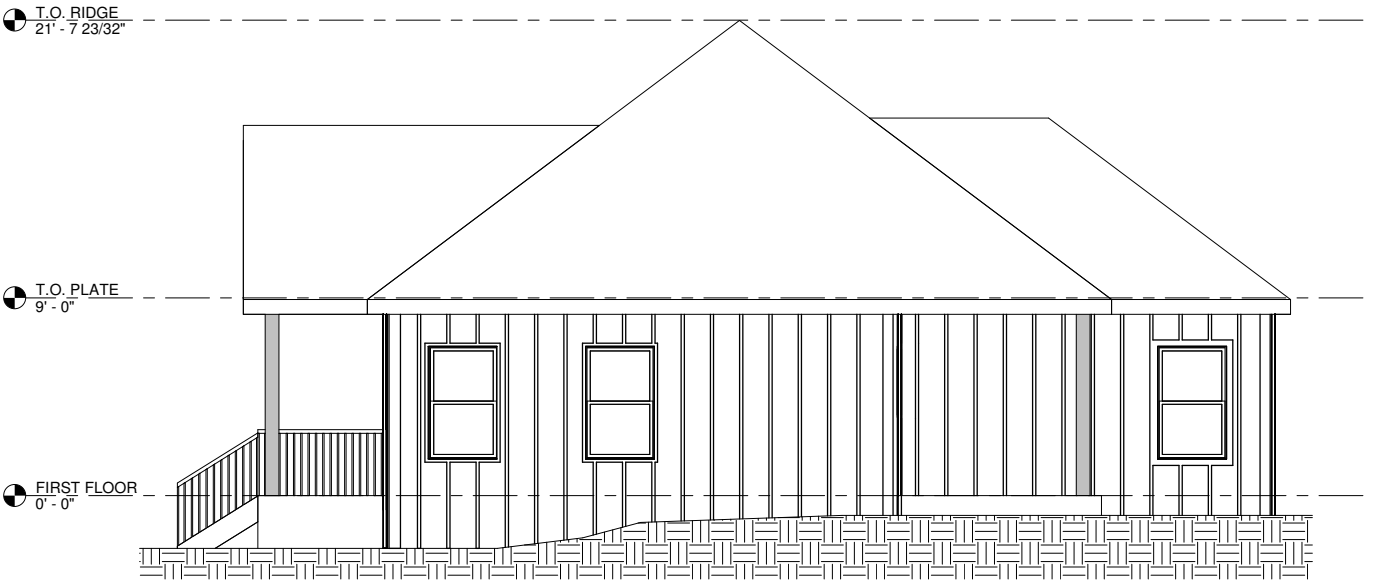
The Heartland 950

WITH BASEMENT

Elevations



FRONT ELEVATION

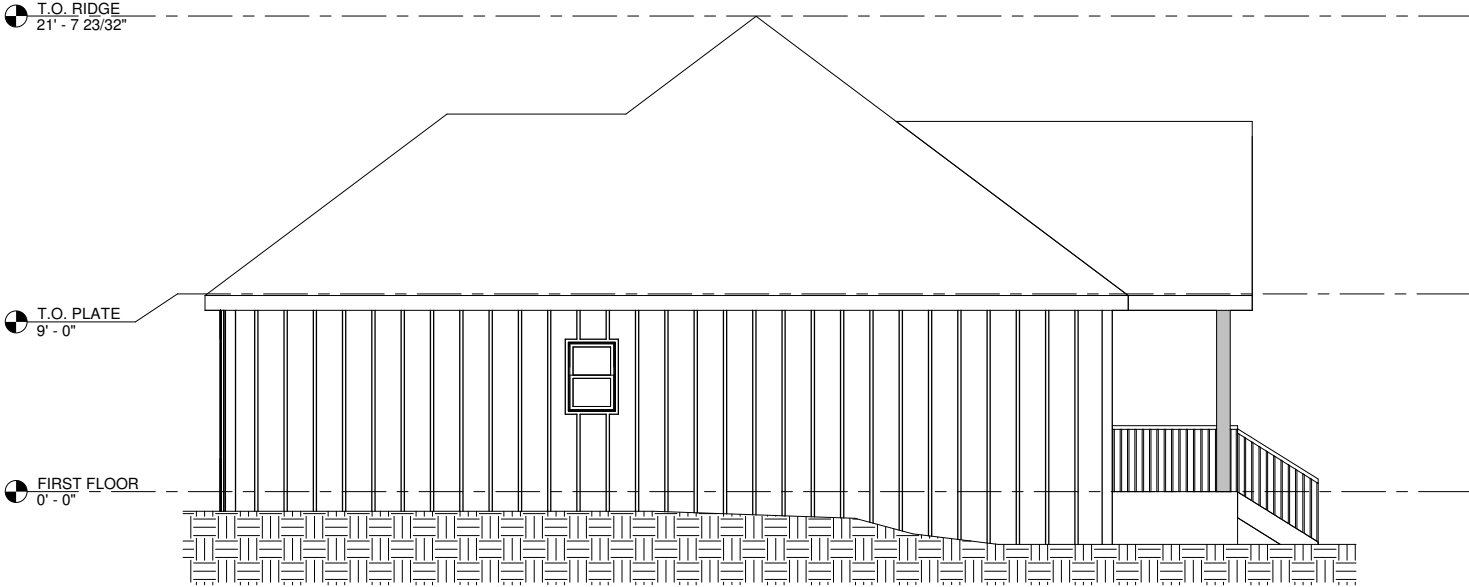


RIGHT ELEVATION

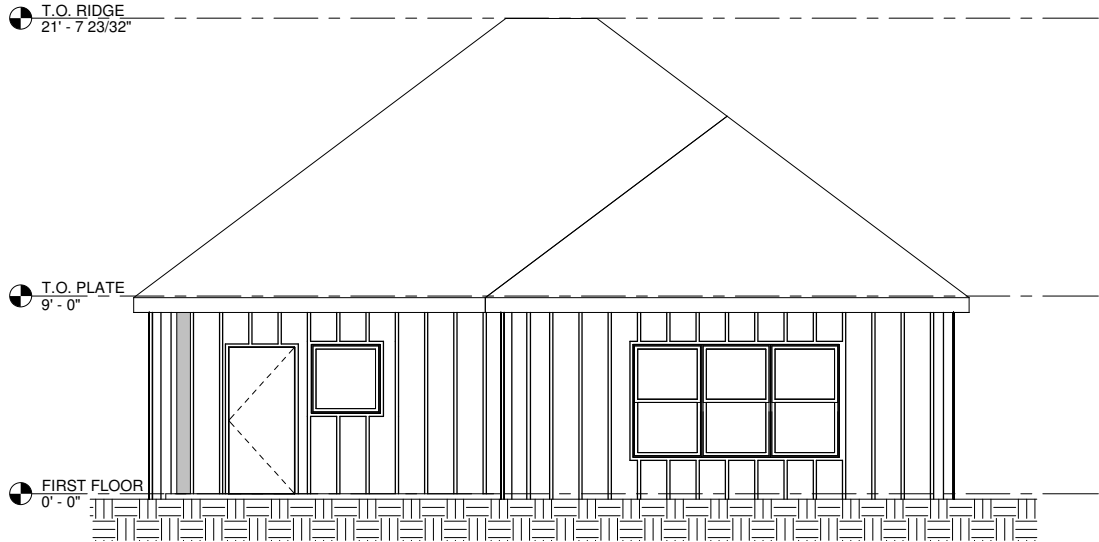
The Heartland 950

WITH BASEMENT

Elevations



LEFT ELEVATION



BACK ELEVATION



**REQUEST A QUOTE &
ORDER A PLAN SET
BASED ON THIS DESIGN**

Your Logix ICF advisor can refer you to a designer who will provide a quotation for your complete plan set including any required modifications.

Please note that some locations may require specific engineering and/or local code adoptions. Be sure to check with your contractor or local building authority to see what is required for your area.



**CONNECT
WITH A LOCAL
MANUFACTURER**

888.838.5038

330 Cain Drive
Haysville, KS 67060-2004

888.706.7709

840 Division St.
Cobourg, ON K9A 5V2

877.789.7622

35 Headingley Rd.
Headingley, MB R4H 0A8

888.453.5961

11581-272 St.
Acheson, AB T7X 6E9

888.453.5961

6333 Unsworth Rd.
Chilliwack, BC V2R 5M3



**info@LogixICF.com
LogixICF.com**

A Product By



Copyright of Logix Brands Ltd. All Rights Reserved.