

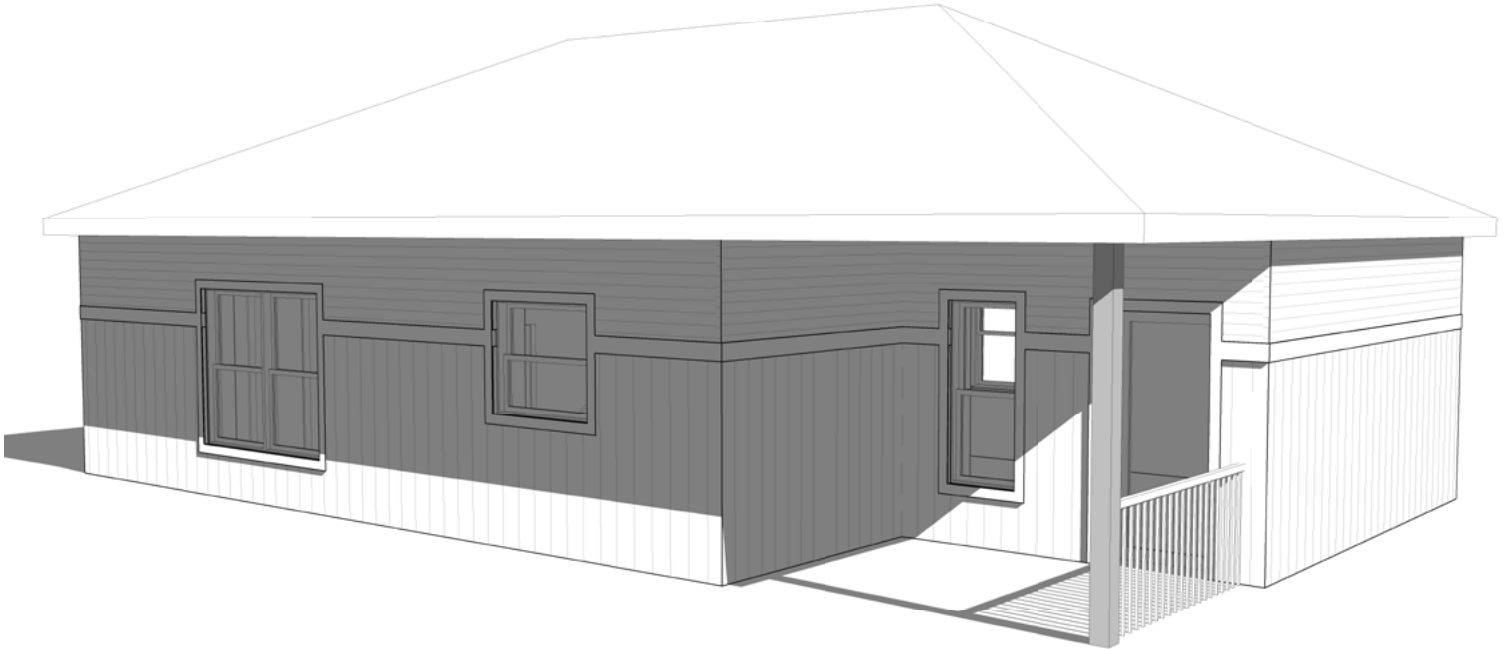
THE HEARTLAND 750

Design, Floor Plan & Elevations



The Heartland 750

Design



ROOM SCHEDULE			
Name	Level	Area	Perimeter
BEDROOM 2	FIRST FLOOR	127 SF	45' - 1"
LIVING	FIRST FLOOR	273 SF	81' - 5 3/4"
BEDROOM 1	FIRST FLOOR	104 SF	40' - 9 1/2"
CLST. 2	FIRST FLOOR	18 SF	17' - 0"
CLST. 1	FIRST FLOOR	18 SF	17' - 0"
BATH	FIRST FLOOR	57 SF	32' - 5"
KITCHEN	FIRST FLOOR	119 SF	43' - 11 1/2"



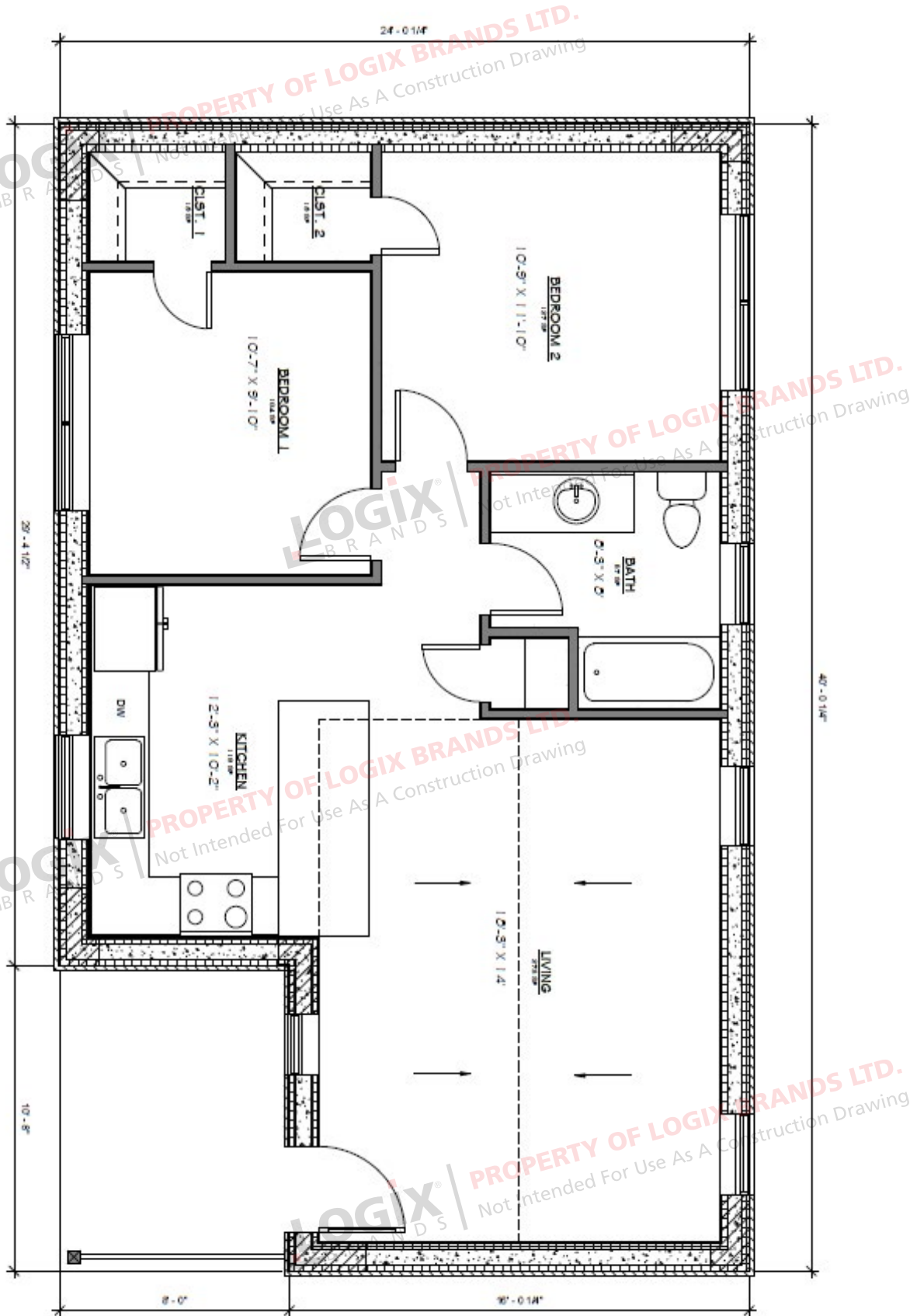
**Kitchen, Living Room,
2 Bedrooms, 1 Bathroom**

**Interior Living Space:
716 sq ft**

**Approximate Exterior
Dimensions:
40' W x 24' D**

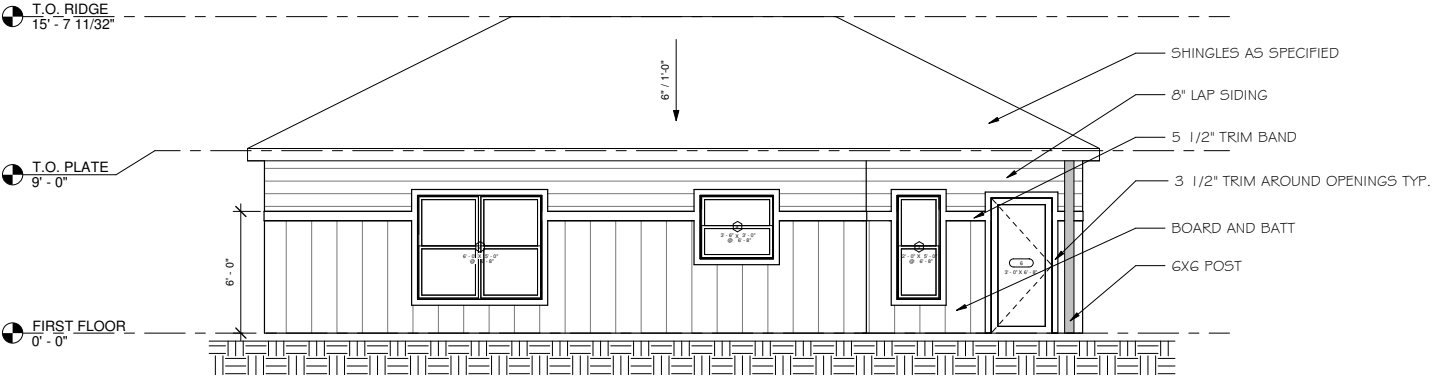
The Heartland 750

Floor Plan

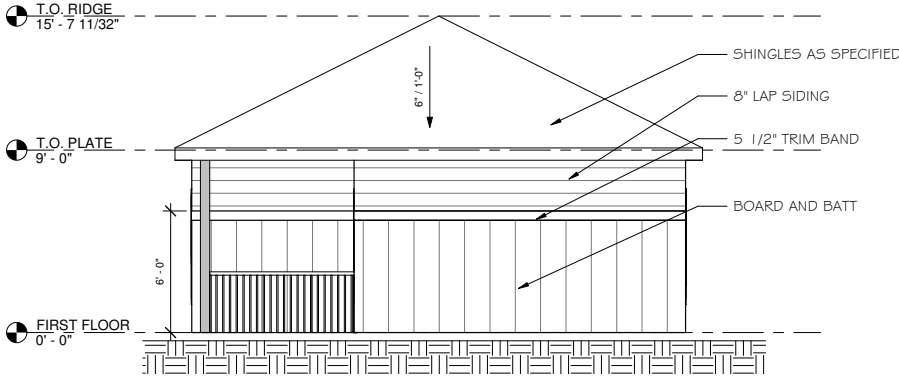


The Heartland 750

Elevations



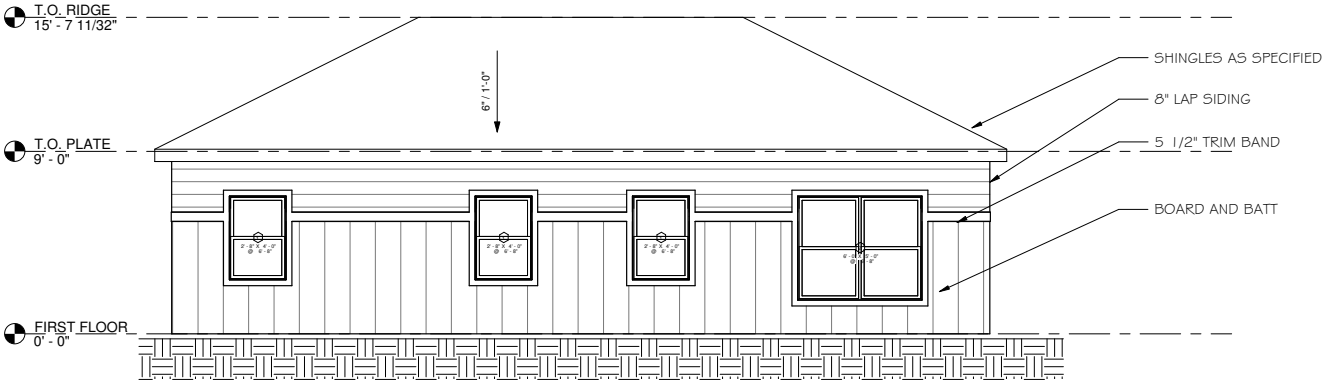
FRONT ELEVATION



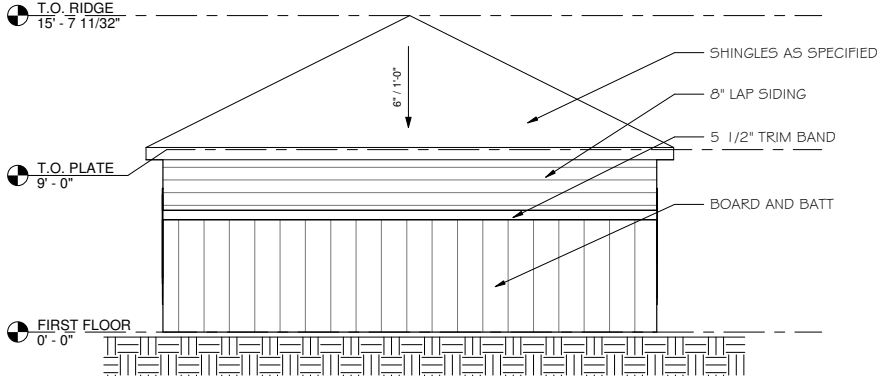
RIGHT ELEVATION

The Heartland 750

Elevations



BACK ELEVATION



LEFT ELEVATION



**REQUEST A QUOTE &
ORDER A PLAN SET
BASED ON THIS DESIGN**

Your Logix ICF advisor can refer you to a designer who will provide a quotation for your complete plan set including any required modifications.

Please note that some locations may require specific engineering and/or local code adoptions. Be sure to check with your contractor or local building authority to see what is required for your area.



**CONNECT
WITH A LOCAL
MANUFACTURER**

888.838.5038

330 Cain Drive
Haysville, KS 67060-2004

888.706.7709

840 Division St.
Cobourg, ON K9A 5V2

877.789.7622

35 Headingley Rd.
Headingley, MB R4H 0A8

888.453.5961

11581-272 St.
Acheson, AB T7X 6E9

888.453.5961

6333 Unsworth Rd.
Chilliwack, BC V2R 5M3



**info@LogixICF.com
LogixICF.com**

A Product By



Copyright of Logix Brands Ltd. All Rights Reserved.