



# THE HEARTLAND 500

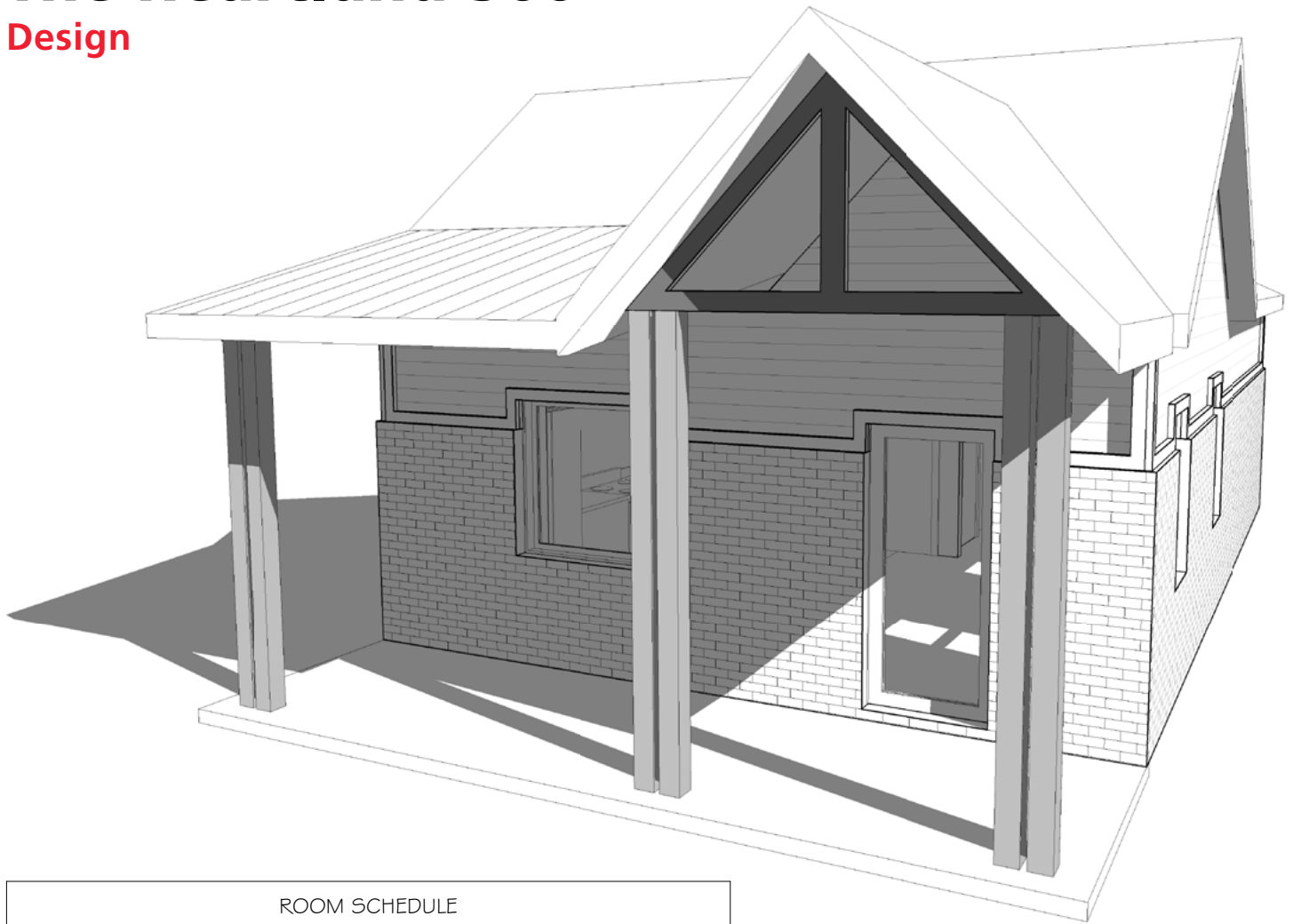
Design, Floor Plan & Elevations



The drawings and images contained in these pages are current at the time of printing. However, the drawings and images may differ slightly when final plan sets are requested, as designs are subject to change.

# The Heartland 500

## Design



ROOM SCHEDULE

Name	Level	Area	Perimeter
MASTER	FIRST FLOOR	113 SF	42' - 8"
BATH	FIRST FLOOR	64 SF	37' - 10"
FOYER	FIRST FLOOR	50 SF	28' - 5 3/4"
CLOSET	FIRST FLOOR	17 SF	17' - 4 1/4"
P.	FIRST FLOOR	5 SF	9' - 2"
KITCHEN	FIRST FLOOR	113 SF	45' - 8 1/4"
LIVING	FIRST FLOOR	144 SF	49' - 0 1/4"



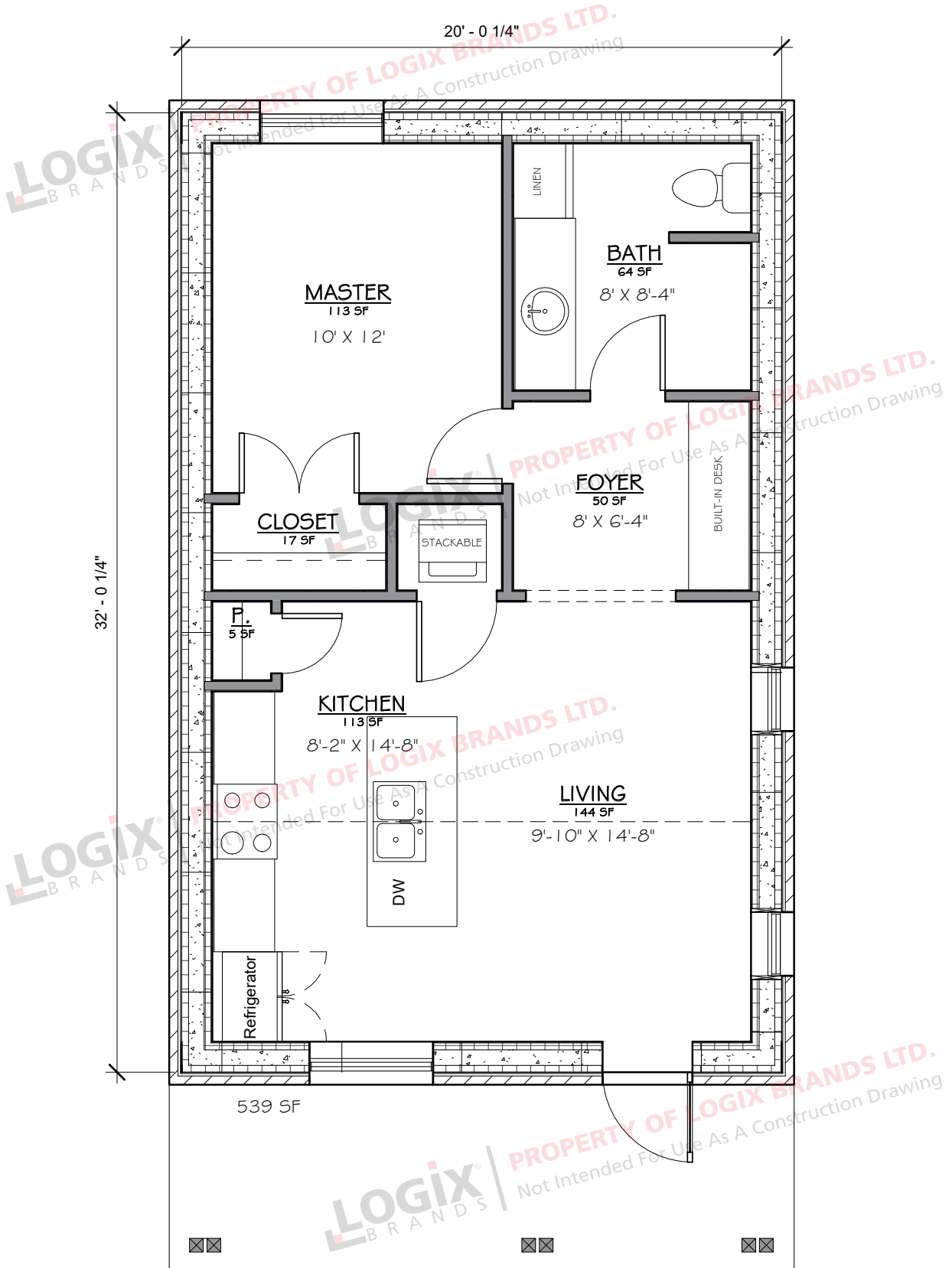
**Kitchen, Living Room,  
1 Bedroom, 1 Bathroom**

**Interior Living Space:  
506 sq ft**

**Approximate Exterior  
Dimensions:  
20' W x 32'D**

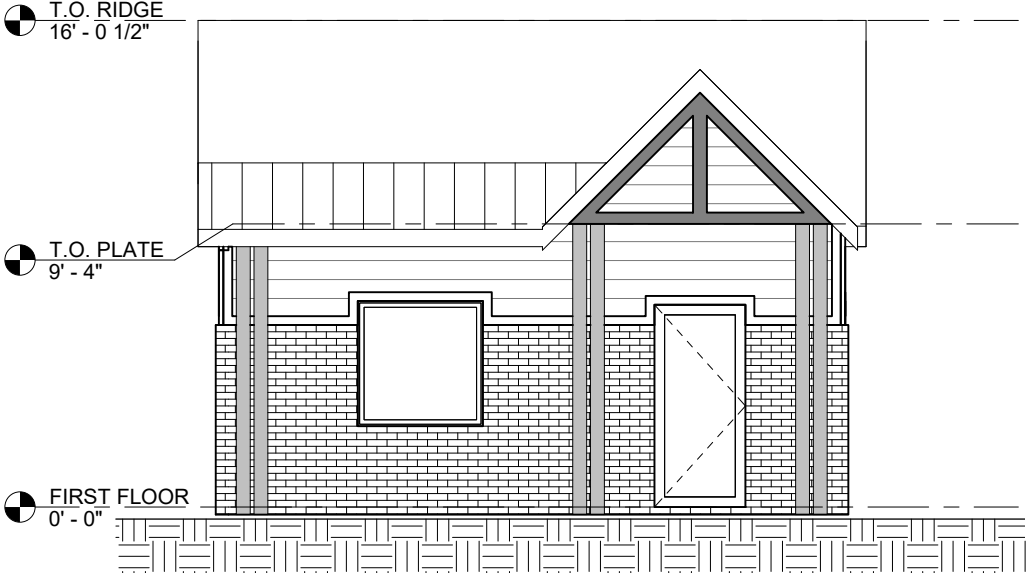
# The Heartland 500

## Floor Plan

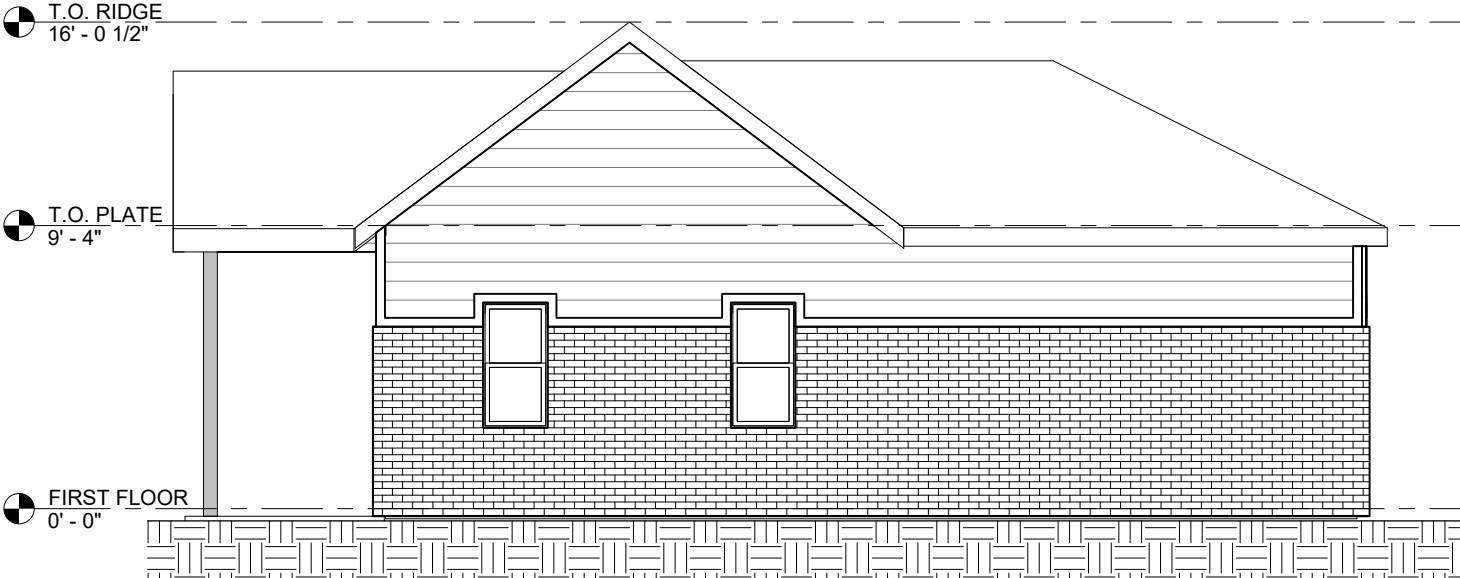


# The Heartland 500

## Elevations



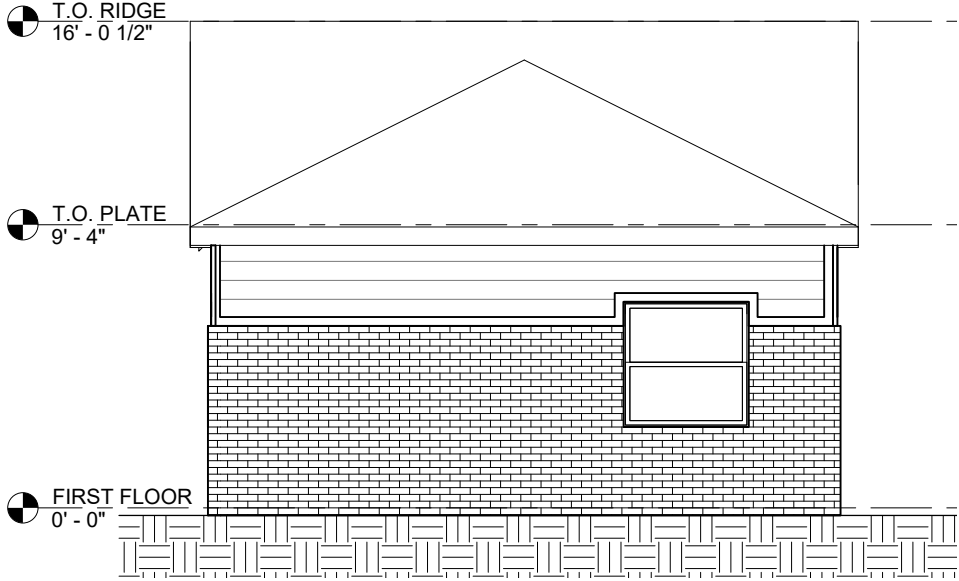
**FRONT ELEVATION**



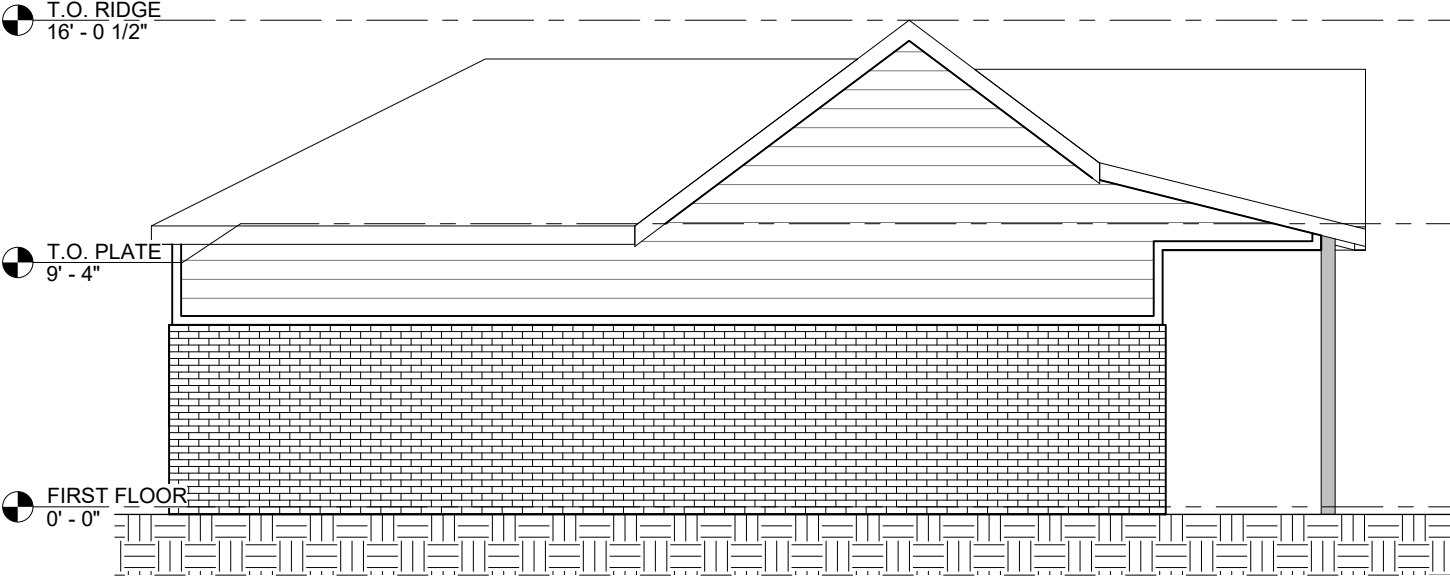
**RIGHT ELEVATION**

# The Heartland 500

## Elevations



### BACK ELEVATION



### LEFT ELEVATION



**REQUEST A QUOTE &  
ORDER A PLAN SET  
BASED ON THIS DESIGN**

Your Logix ICF advisor can refer you to a designer who will provide a quotation for your complete plan set including any required modifications.

Please note that some locations may require specific engineering and/or local code adoptions. Be sure to check with your contractor or local building authority to see what is required for your area.



**CONNECT  
WITH A LOCAL  
MANUFACTURER**

**888.838.5038**

330 Cain Drive  
Haysville, KS 67060-2004

**888.706.7709**

840 Division St.  
Cobourg, ON K9A 5V2

**877.789.7622**

35 Headingley Rd.  
Headingley, MB R4H 0A8

**888.453.5961**

11581-272 St.  
Acheson, AB T7X 6E9

**888.453.5961**

6333 Unsworth Rd.  
Chilliwack, BC V2R 5M3



**info@LogixICF.com**  
**LogixICF.com**

A Product By



Copyright of Logix Brands Ltd. All Rights Reserved.