



THE HEARTLAND 1250

Design, Floor Plan & Elevations



The drawings and images contained in these pages are current at the time of printing. However, the drawings and images may differ slightly when final plan sets are requested, as designs are subject to change.

The Heartland 1250

Design



ROOM SCHEDULE			
Name	Level	Area	Perimeter
BEDROOM 3	FIRST FLOOR	138 SF	46' - 7 1/4"
CLST. 3	FIRST FLOOR	18 SF	23' - 3 1/8"
MST. SUITE	FIRST FLOOR	163 SF	50' - 5 5/8"
UTILITY	FIRST FLOOR	36 SF	23' - 11 3/4"
MST. BATH	FIRST FLOOR	59 SF	38' - 2 5/8"
WIC	FIRST FLOOR	26 SF	23' - 0 5/8"
W.C.	FIRST FLOOR	14 SF	15' - 10 1/8"
SHOWER	FIRST FLOOR	13 SF	14' - 5"
P.	FIRST FLOOR	24 SF	19' - 4 5/8"
MST. HALL	FIRST FLOOR	22 SF	20' - 11 1/8"
HALL	FIRST FLOOR	20 SF	17' - 11 1/2"
HALL BATH	FIRST FLOOR	48 SF	29' - 3 1/2"
BEDROOM 2	FIRST FLOOR	140 SF	58' - 3"
CLST. 2	FIRST FLOOR	11 SF	14' - 11"
KITCHEN	FIRST FLOOR	173 SF	58' - 10 7/8"
LIVING ROOM	FIRST FLOOR	206 SF	57' - 7"
HALL	FIRST FLOOR	50 SF	32' - 2 5/8"



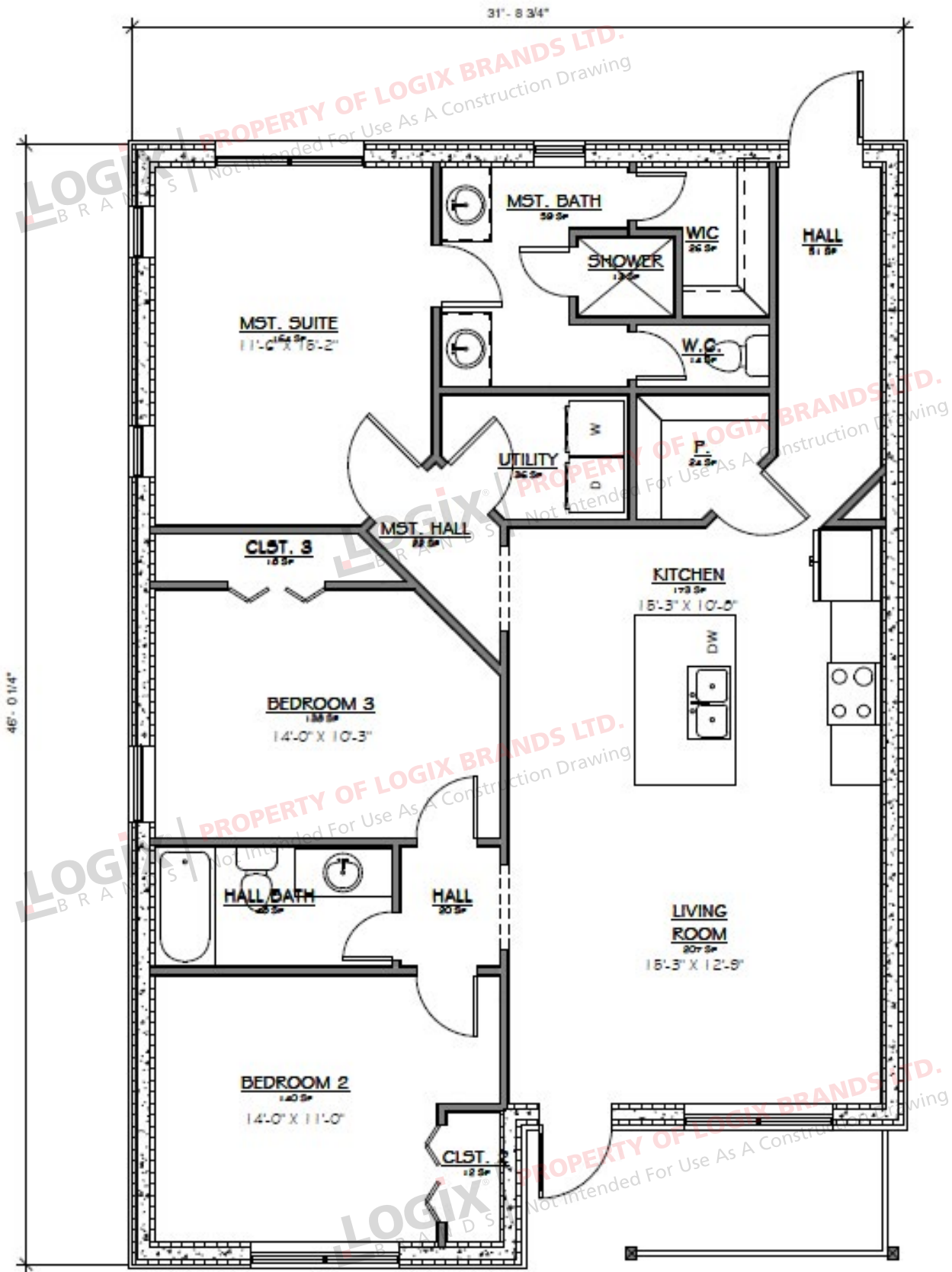
Kitchen, Living Room, 3 Bedrooms, 2 Bathrooms

Interior Living Space: 1,161 sq ft

Approximate Exterior Dimensions: 32' W x 46' D

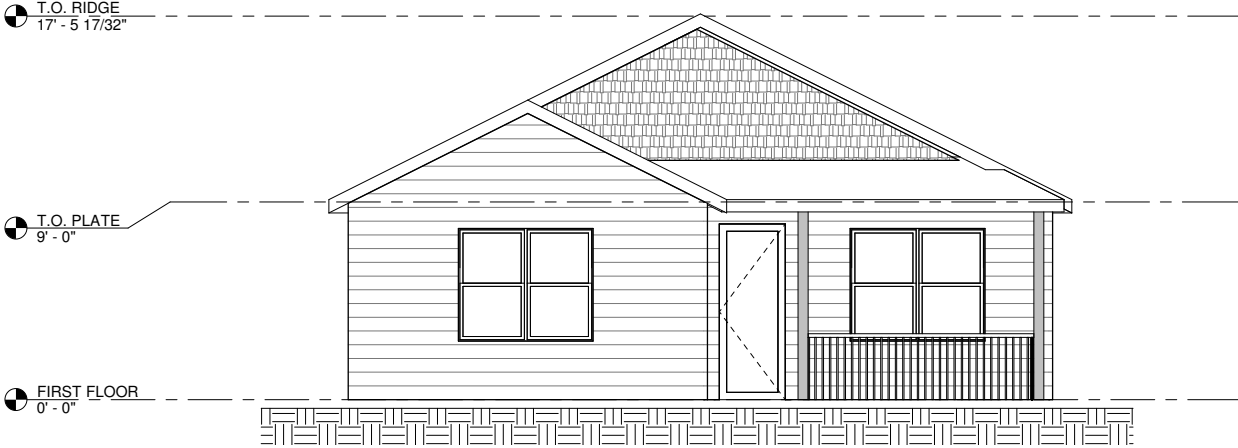
The Heartland 1250

Floor Plan

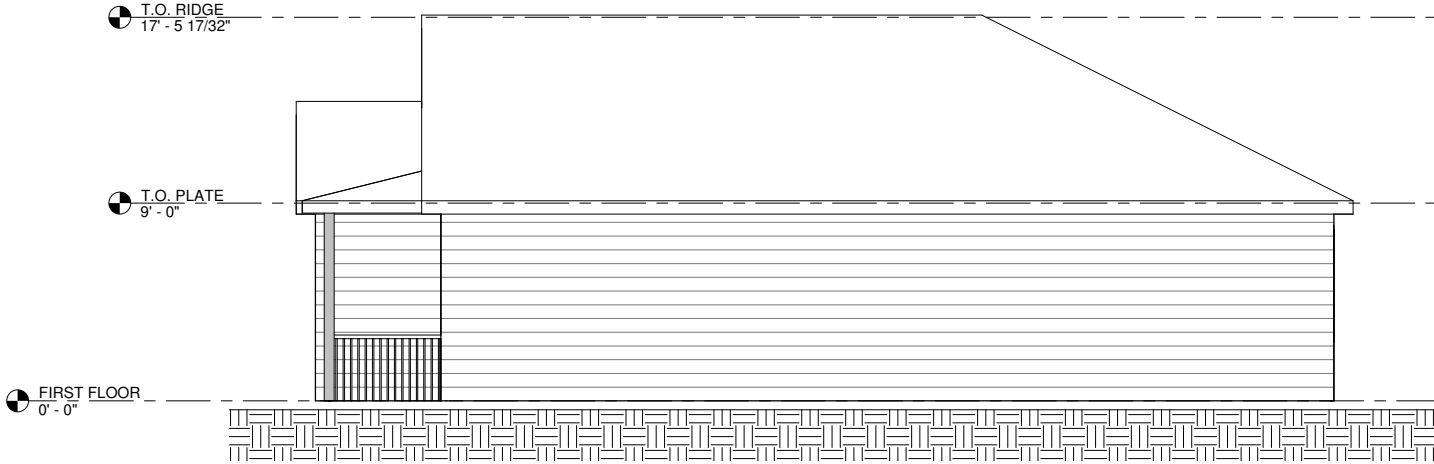


The Heartland 1250

Elevations



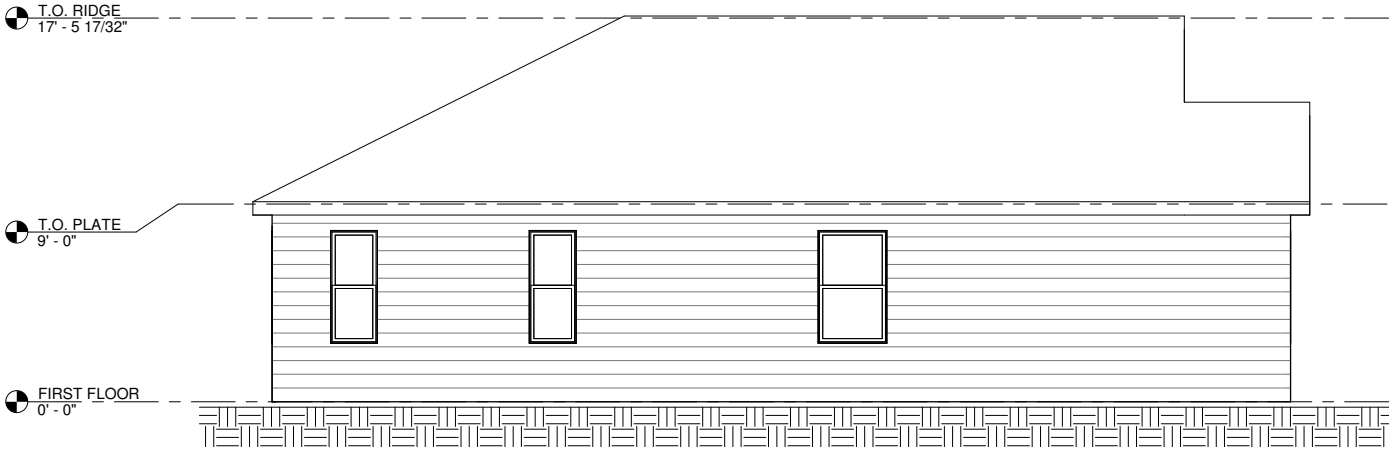
FRONT ELEVATION



RIGHT ELEVATION

The Heartland 1250

Elevations



LEFT ELEVATION

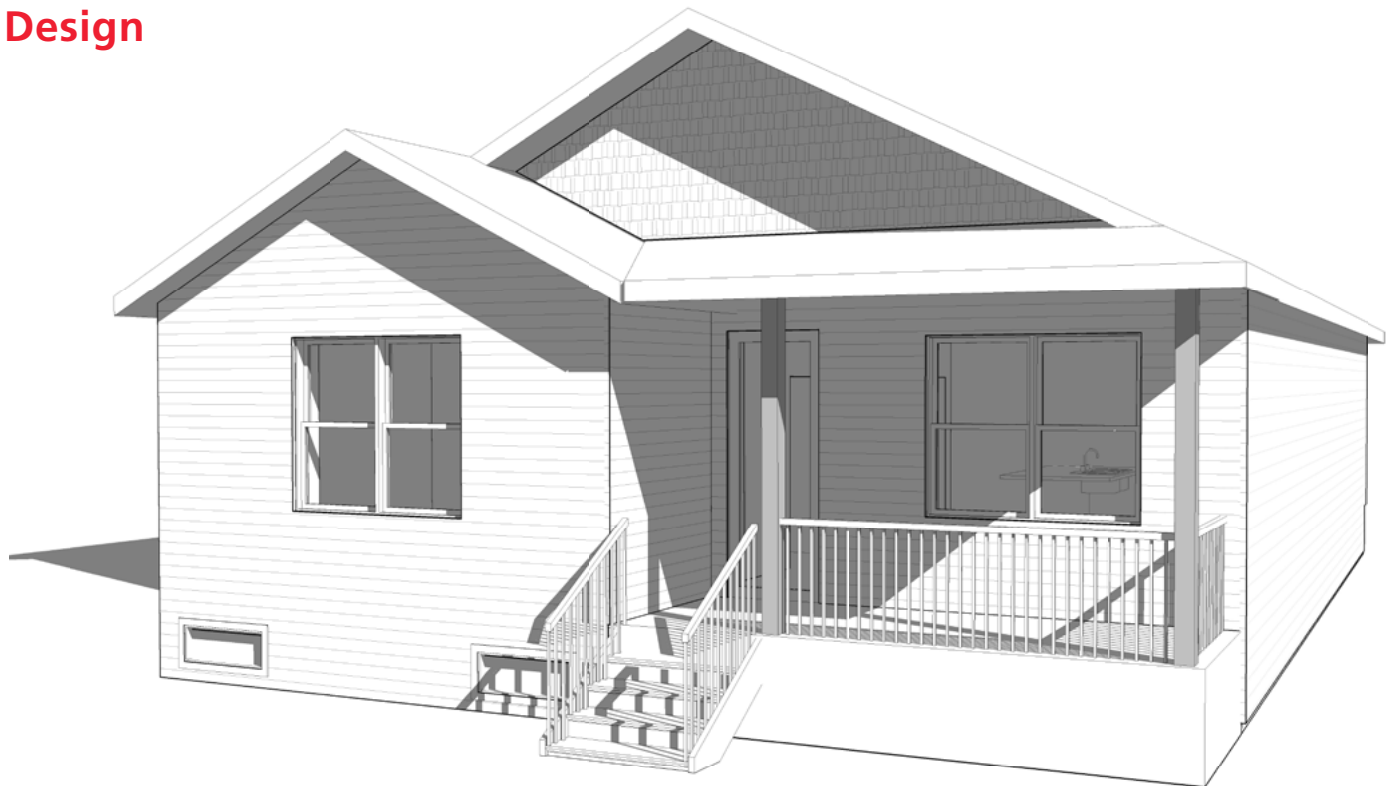


BACK ELEVATION

The Heartland 1250

WITH BASEMENT

Design



ROOM SCHEDULE			
Name	Level	Area	Perimeter
BEDROOM 3	FIRST FLOOR	138 SF	46' - 7 3/4"
CLST. 3	FIRST FLOOR	18 SF	23' - 9 5/8"
MST. SUITE	FIRST FLOOR	166 SF	50' - 11 1/2"
UTILITY	FIRST FLOOR	38 SF	24' - 8 3/4"
MST. BATH	FIRST FLOOR	64 SF	39' - 7 5/8"
WIC	FIRST FLOOR	28 SF	23' - 10 5/8"
W.C.	FIRST FLOOR	13 SF	15' - 9 1/8"
SHOWER	FIRST FLOOR	15 SF	15' - 3"
P.	FIRST FLOOR	24 SF	19' - 4 5/8"
MST. HALL	FIRST FLOOR	19 SF	19' - 5 3/8"
HALL	FIRST FLOOR	18 SF	17' - 3"
HALL BATH	FIRST FLOOR	49 SF	29' - 10"
BEDROOM 2	FIRST FLOOR	135 SF	56' - 9 1/2"
CLST. 2	FIRST FLOOR	11 SF	14' - 4"
KITCHEN	FIRST FLOOR	172 SF	58' - 10 7/8"
LIVING ROOM	FIRST FLOOR	198 SF	56' - 5 1/2"
HALL	FIRST FLOOR	106 SF	67' - 8 3/8"
BASEMENT	BASEMENT SLAB	1270 SF	154' - 0"



Kitchen, Living Room, 3 Bedrooms, 2 Bathrooms

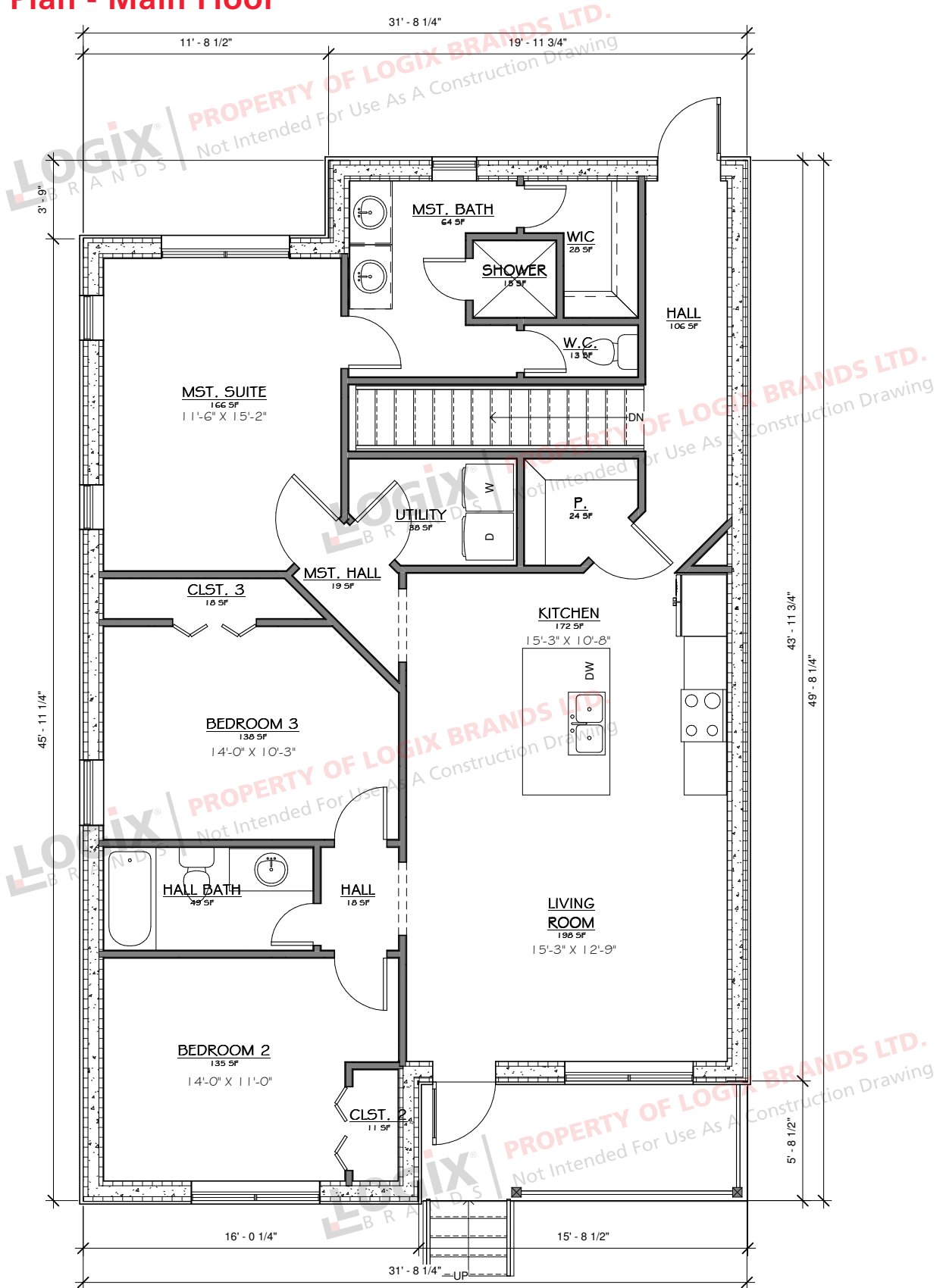
Interior Living Space: 1212 sq ft

Approximate Exterior Dimensions: 32' W x 49' D

The Heartland 1250

WITH BASEMENT

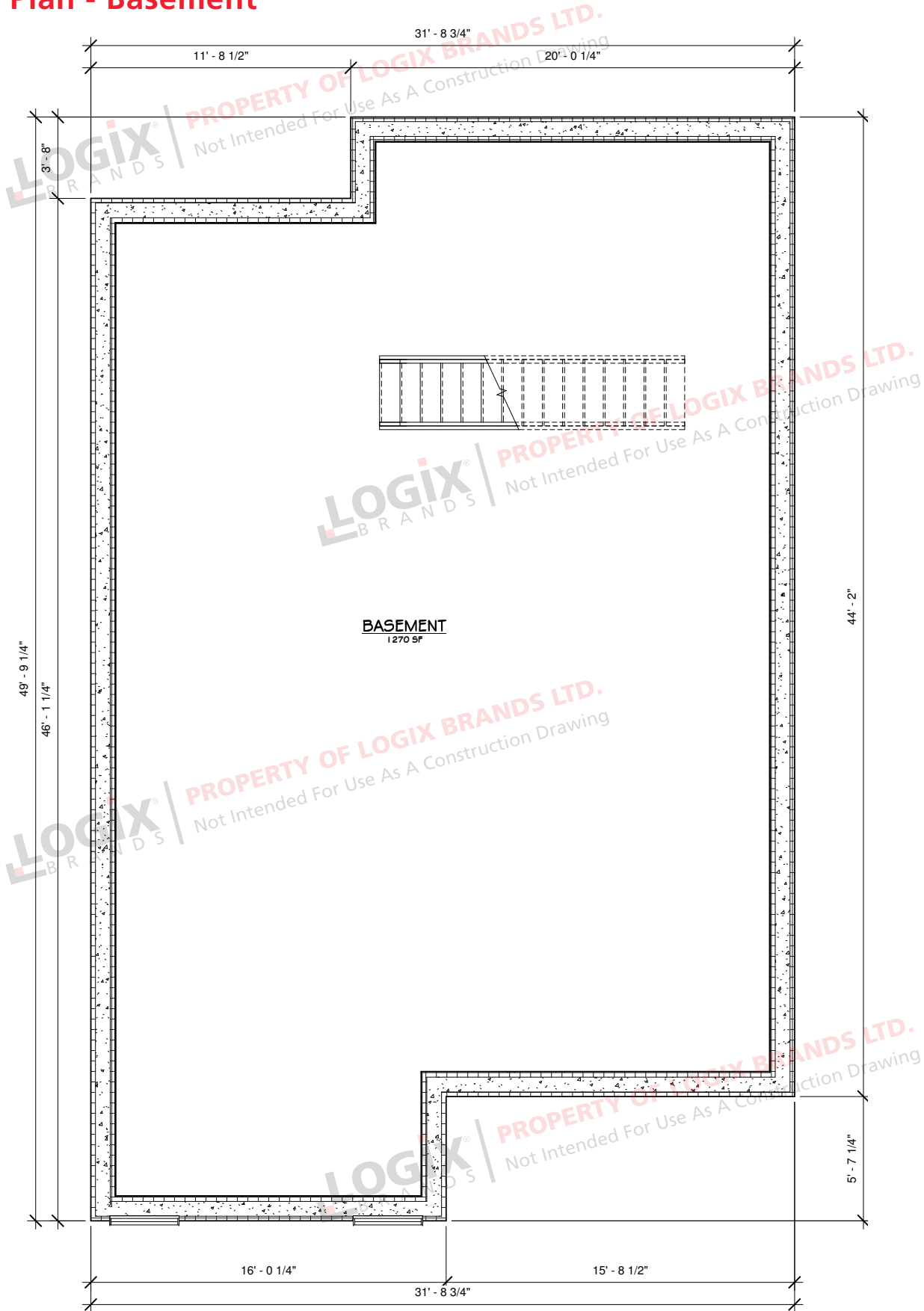
Floor Plan - Main Floor



The Heartland 1250

WITH BASEMENT

Floor Plan - Basement



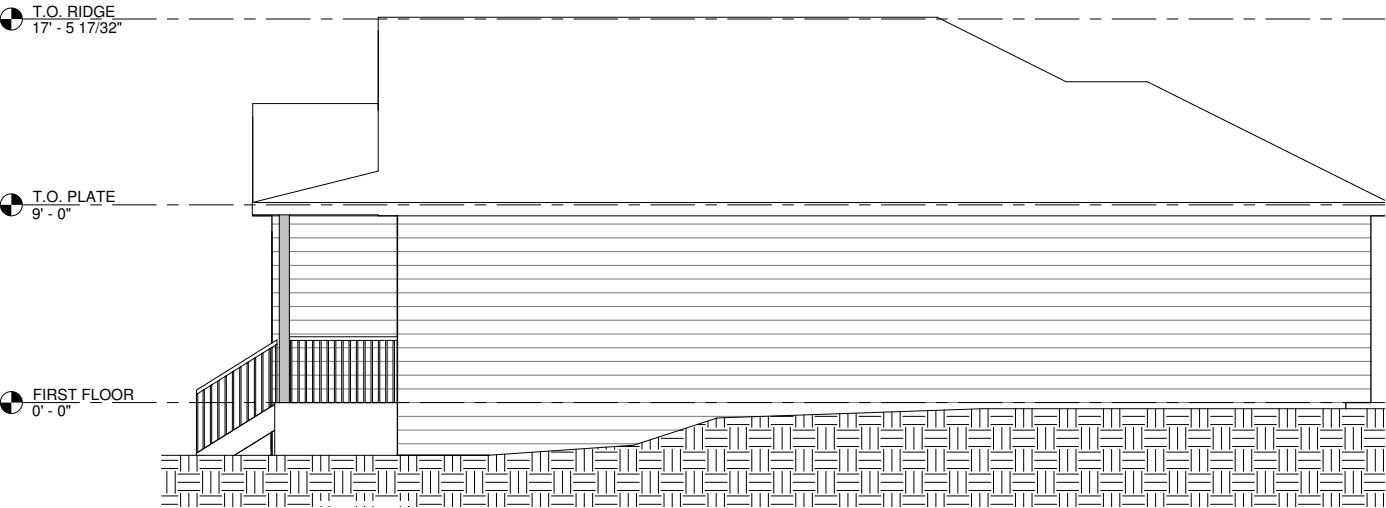
The Heartland 1250

WITH BASEMENT

Elevations



FRONT ELEVATION

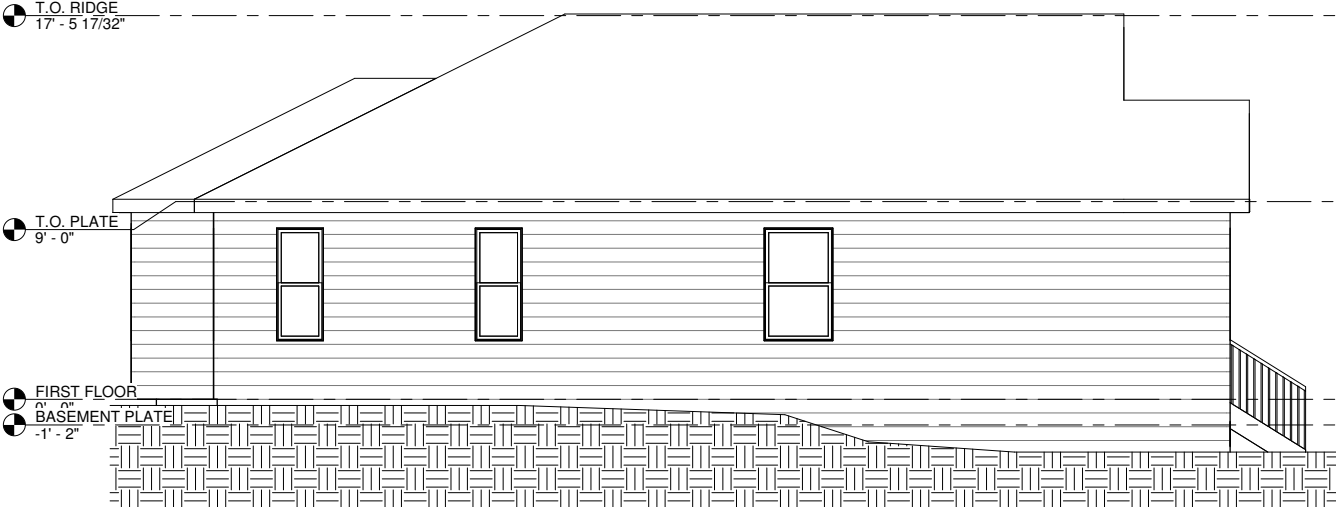


RIGHT ELEVATION

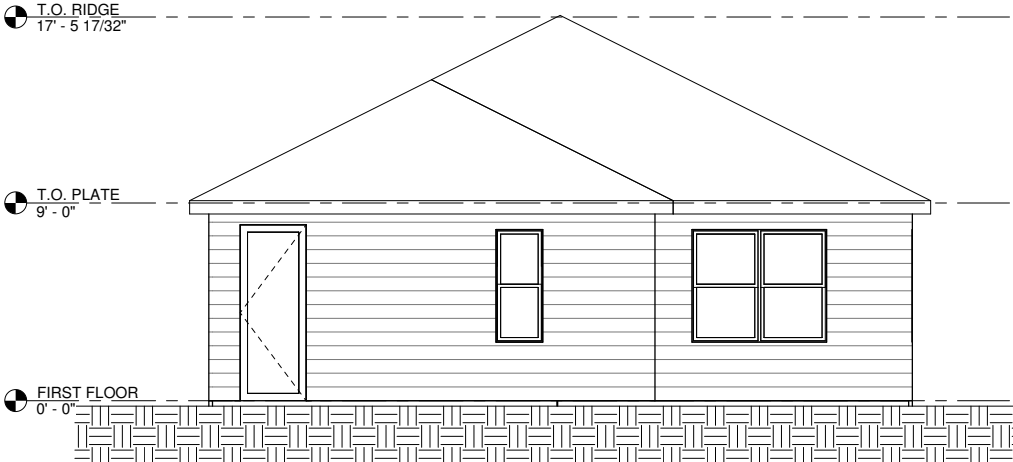
The Heartland 1250

WITH BASEMENT

Elevations



LEFT ELEVATION



BACK ELEVATION



**REQUEST A QUOTE &
ORDER A PLAN SET
BASED ON THIS DESIGN**

Your Logix ICF advisor can refer you to a designer who will provide a quotation for your complete plan set including any required modifications.

Please note that some locations may require specific engineering and/or local code adoptions. Be sure to check with your contractor or local building authority to see what is required for your area.



**CONNECT
WITH A LOCAL
MANUFACTURER**

888.838.5038

330 Cain Drive
Haysville, KS 67060-2004

888.706.7709

840 Division St.
Cobourg, ON K9A 5V2

877.789.7622

35 Headingley Rd.
Headingley, MB R4H 0A8

888.453.5961

11581-272 St.
Acheson, AB T7X 6E9

888.453.5961

6333 Unsworth Rd.
Chilliwack, BC V2R 5M3



info@LogixICF.com
LogixICF.com

A Product By



Copyright of Logix Brands Ltd. All Rights Reserved.