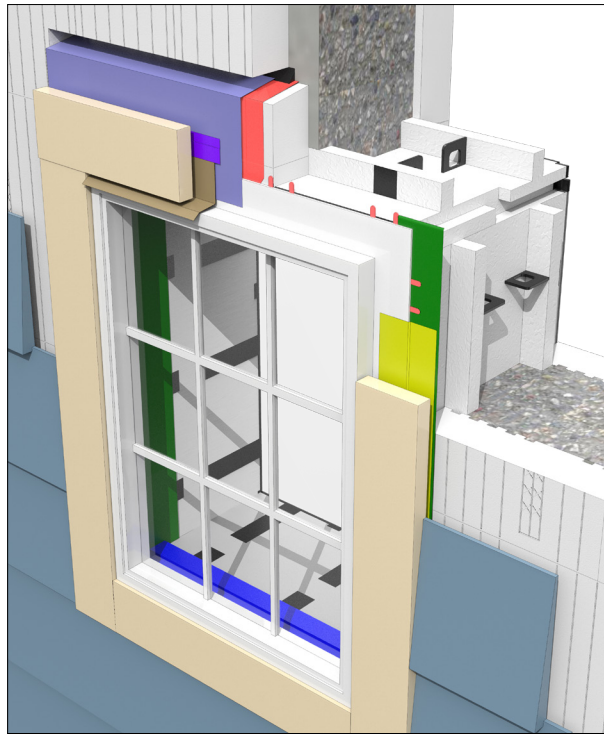
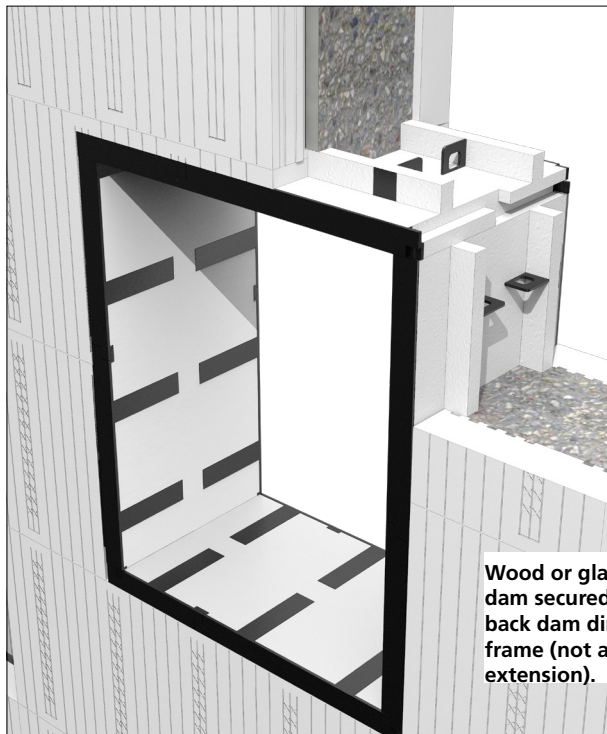


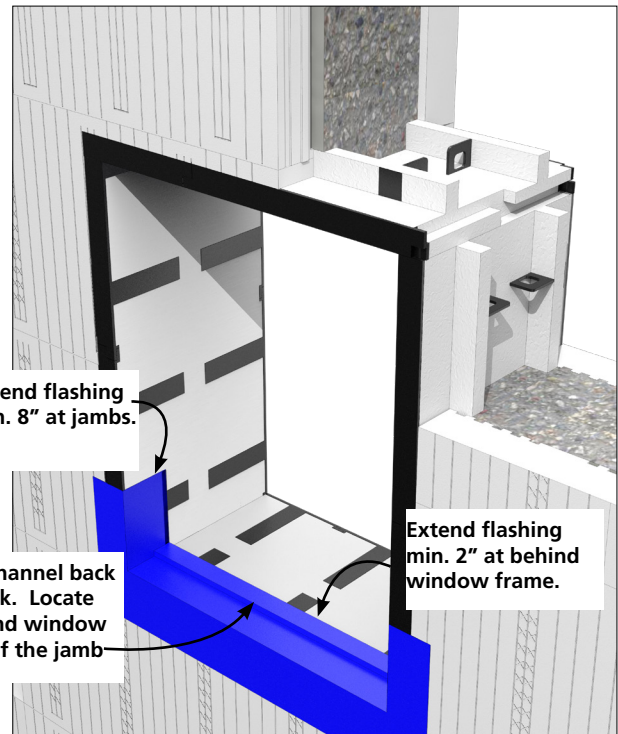
TECHNICAL BULLETIN No. 46



COMPLETED ASSEMBLY

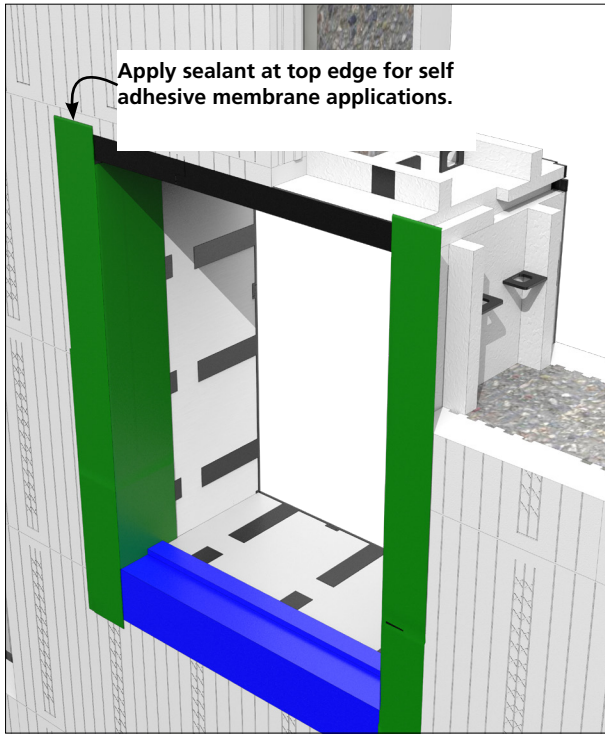


STEP 1: Install Pro Buck

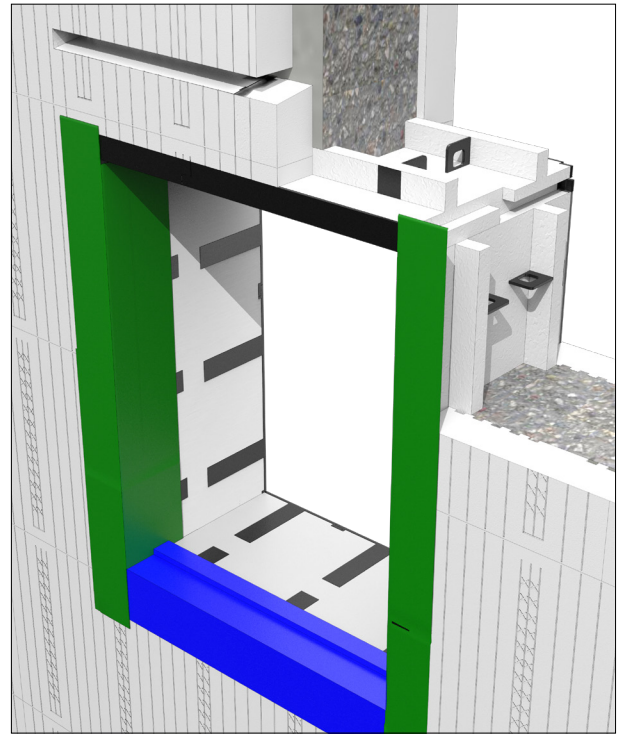


STEP 2: Apply self adhesive or liquid applied membrane flashing with back dam.

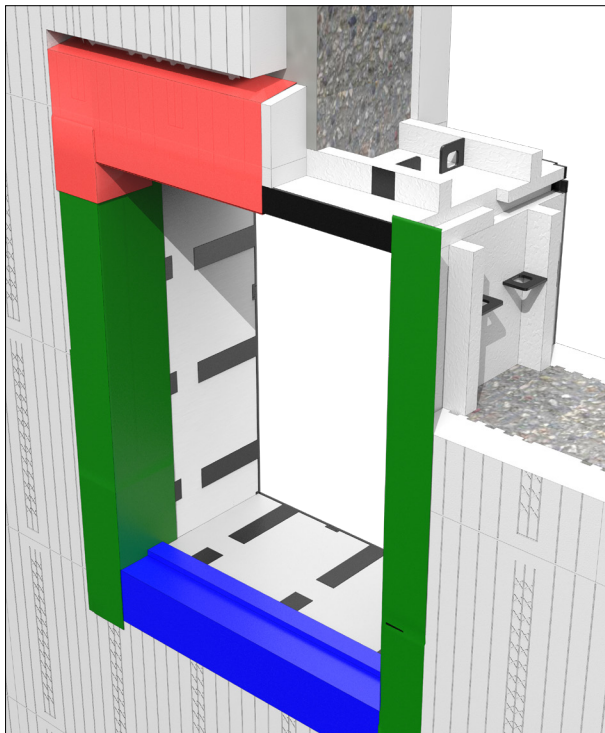
TECHNICAL BULLETIN No. 46



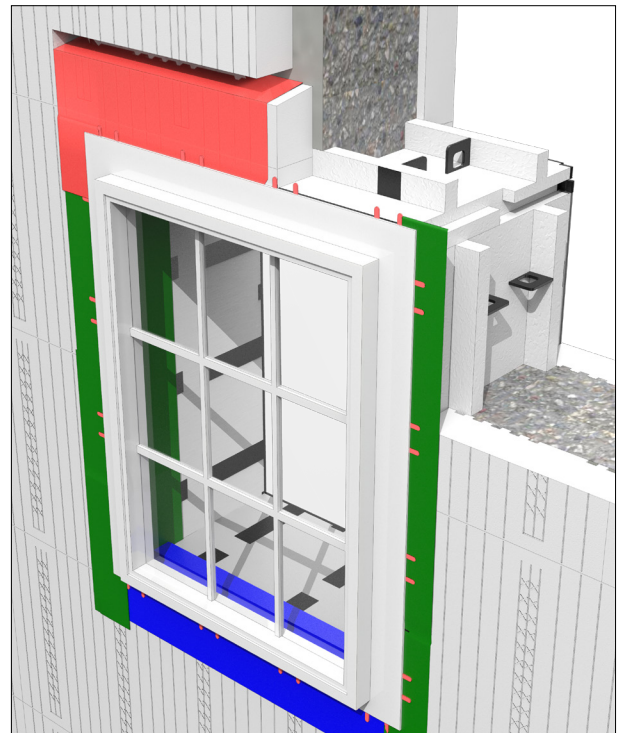
STEP 3: Apply self adhesive or liquid applied membrane flashing at jambs.



STEP 4: Create a 15 degree sloped kerf above header upto face of concrete.



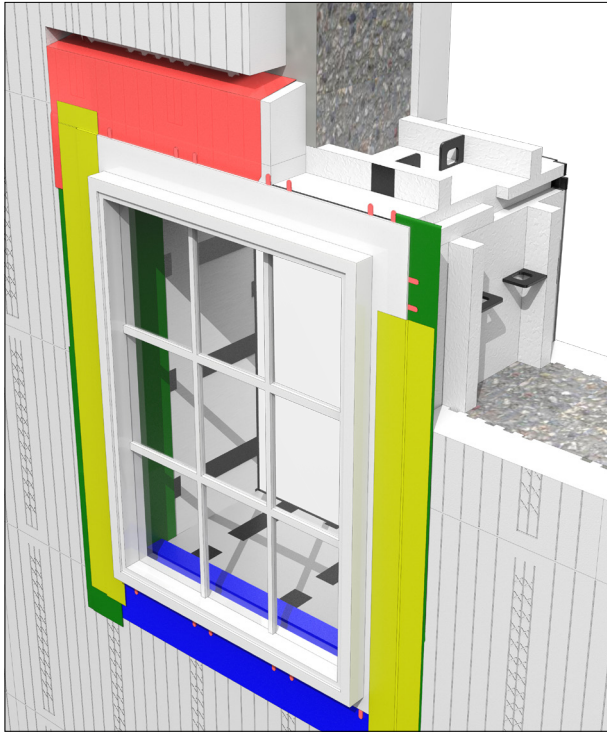
STEP 5: Apply self adhesive or liquid applied membrane flashing at header into kerf. Extend membrane to face of concrete.



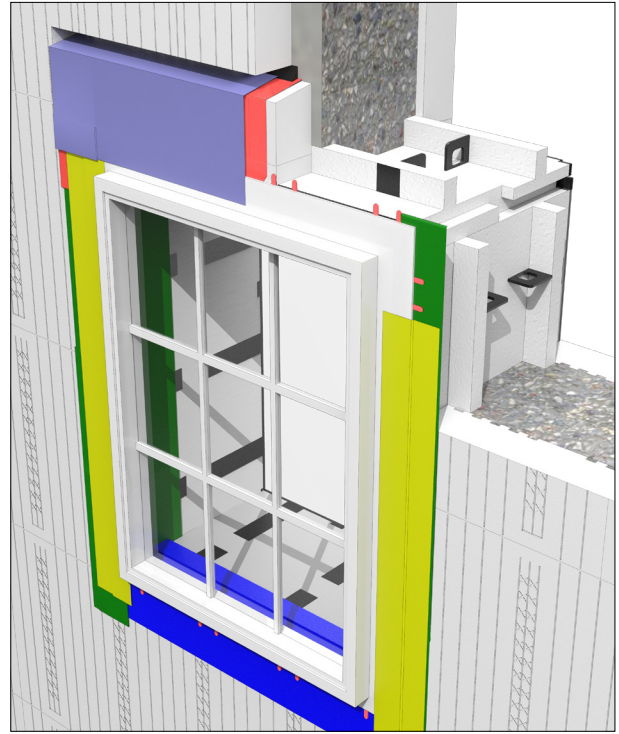
STEP 6: Install window and shim out for drainage.



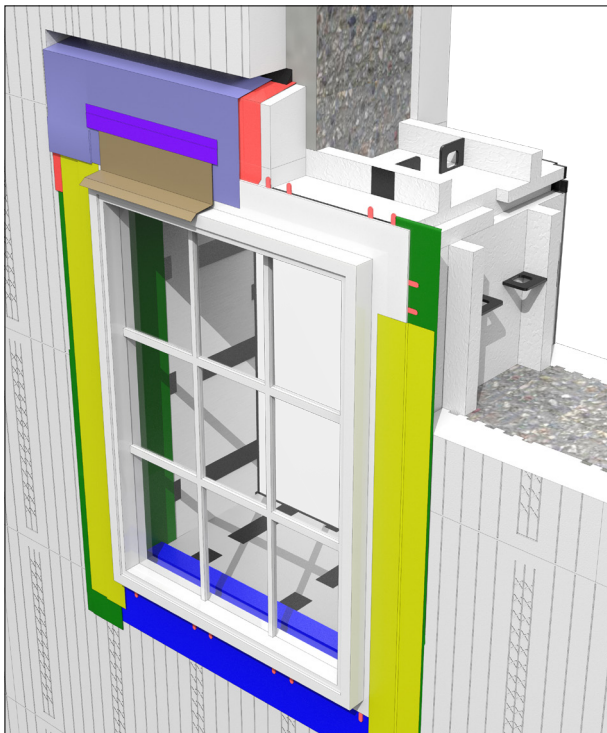
TECHNICAL BULLETIN No. 46



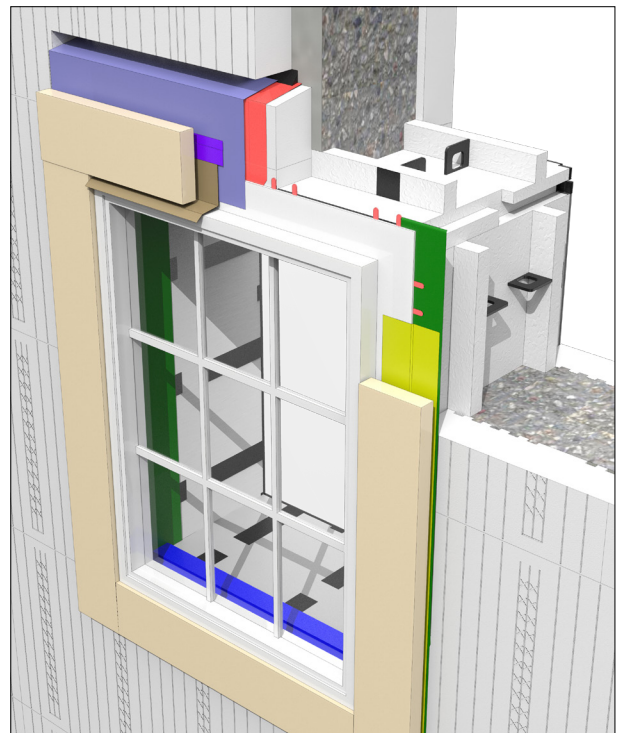
STEP 7: Apply self adhesive or liquid applied membrane flashing over sides of window flange.



STEP 8: Apply self adhesive or liquid applied membrane flashing over window flange at header and into kerf. Apply polymer sealant at concrete/flashing interface.



STEP 9: Install cap flashing.



STEP 10: Install finish trim.