



AWARDS 2022

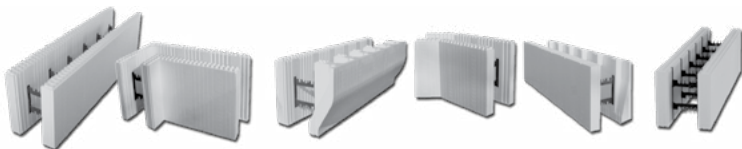
**CONGRATULATIONS
TO THE WINNERS
OF THE 2022
LOGIX ICF AWARDS**

**MOST OUTSTANDING
SMALL RESIDENTIAL PROJECT**

**MOST OUTSTANDING
LARGE RESIDENTIAL PROJECT**

**MOST OUTSTANDING
COMMERCIAL PROJECT**

**MOST OUTSTANDING LOGIX
BRANDS SYSTEM-BUILD**





THE URBAN DREAM HOME



TYPE OF BUILD	Residential	SIZE	6,400 sq. ft.
LOCATION	Winnipeg, MB	YEAR BUILT	2020

DESIGN HIGHLIGHTS

The design of this house matches the timeless and iconic design of stately surrounding manors. Built with 4" core Logix ICFs, this design features 26 corners and two levels of 11' walls over a full height 8" basement.

CONSTRUCTION FACTS

This was a winter build in cold-climate Winnipeg, Manitoba, that was further complicated by the infill lot with many mature trees. The basement features a wood structural floor.



RESILIENCE, SUSTAINABILITY & COMFORT NOTES

The air-tight Logix ICF building envelope creates a wonderfully comfortable and quiet urban dream home.

“This lovely home has become an iconic architectural piece in the Winnipeg community. The front tyndall stone is fashioned after Winnipeg stone cathedrals dating back to 1880.”

Conrad Hoepfner, Vice President
AMC Foam

WINNER - LARGE RESIDENTIAL



CONTACT LOGIX ICF
 Conrad Hoepfner, VP
 conrad@amcfoam.com
 1-877-789-7622

888-415-6449
LogixICF.com
Info@LogixICF.com



THE OCEAN FRONT HOME



TYPE OF BUILD	Residential	SIZE	3,309 sq. ft.
LOCATION	Plymouth, MA	YEAR BUILT	2021

DESIGN HIGHLIGHTS

The builder’s goal was to build an open concept home while positioning it properly on the lot to capture the ocean views on all floor levels of this full time residence. From the footing to the walk out roof, every floor and wall is made with LogixICFs to ensure year round comfort in New England.

CONSTRUCTION FACTS

The 8” Logix ICF was used in the garage and foundation portion, while transitioning to a 6” concrete core for the remainder of the walls.

The significant open interior space was completed with large floor spans eliminating the need for supporting beams and posts, and having high ceilings on all levels.



RESILIENCE, SUSTAINABILITY & COMFORT NOTES

Since this is a ocean front property, this home had to be built to withstand strong winds, salt air, and moisture.

It was essential for this project to be built with resiliency to natural disasters and to be soundproof while focusing on efficiency and sustainability.

“This is the first off-grid home in the South Shore of Massachusetts, and it utilized Logix ICF and Heat Sheet products paired with Tesla solar panels and back up batteries.”

Win Peck,
Logix ICF Territory Manager

RUNNER UP - LARGE RESIDENTIAL



CONTACT LOGIX ICF
 Kurtis Chapman
 kurtis@FormSolutions.ca
 1-888-706-7709

888-415-6449
LogixICF.com
Info@LogixICF.com



THE CONSERVATIVE CONTEMPORARY HOME



TYPE OF BUILD	Residential	SIZE	2,389 sq. ft.
LOCATION	Creston, BC	YEAR BUILT	2020

DESIGN HIGHLIGHTS

This single story home features a conservative contemporary design utilizing a blend of hip and varied single pitch roof sections. The standard ceiling height is 9 ft with a vaulted area with a 18' high peak ceiling height. A section of the footprint is dedicated to a fully featured in-law suite.

CONSTRUCTION FACTS

For the ICF construction, significant labor was saved by using Helix micro rebar in lieu of standard rebar. To accomplish the Step 5 design 8" Logix ICF blocks were enhanced with 2" gps foam inserts.



RESILIENCE, SUSTAINABILITY & COMFORT NOTES

This home was designed, modeled and awarded a BC Step Code 5 designation, the first Step 5 designation in Creston. An incredible air-tightness of 0.45 ACH50 was achieved. This home cost an average of \$200/month to heat and cool in 2021.

“Every new customer that our company courts is sent to this home as an archetype for future builds with us.”

Adam K.,
True Build Contractors.

WINNER - SMALL RESIDENTIAL



CONTACT LOGIX ICF
 Lyle Hamilton
 lyle.hamilton@beaverplastics.com
 1-888-453-5961

888-415-6449
LogixICF.com
Info@LogixICF.com



THE VIKING LONGHOUSE



TYPE OF BUILD	Residential	SIZE	2,300 sq. ft.
LOCATION	Luther, OK	YEAR BUILT	2021

DESIGN HIGHLIGHTS

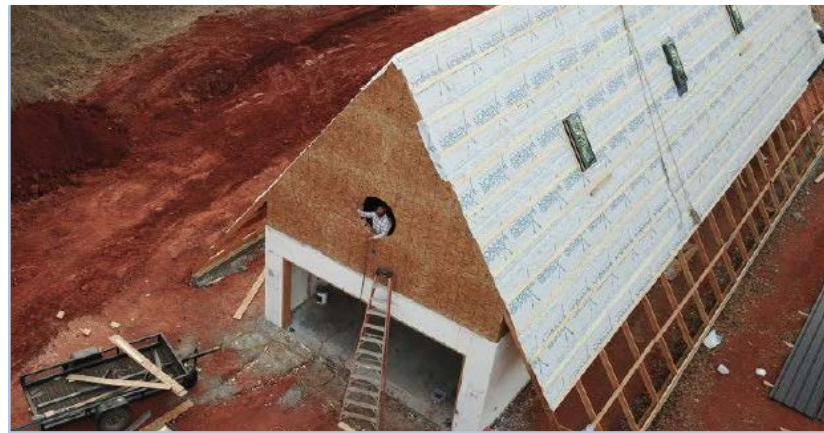
This design concepts has roots in the ancient Viking Longhouse and it creates an ideal space for passive cooling and heating techniques. This A-frame structure creates great thermal mass while the roof system, which overhangs each side by 9', provides lots of space for covered porches and greenhouses.

CONSTRUCTION FACTS

The rectangular slab is oriented east to west and measures 20' x 80'. The 2nd level i-joint floor system is supported on the Logix ICF walls by 2" x 12" ledgers and anchor bolts. The wood-framed gable roof is insulated with 2" closed cell spray foam insulation. The Logix walls were finished with stucco, inside and out.

RESILIENCE, SUSTAINABILITY & COMFORT NOTES

The kitchen is open to the second floor with a Big Ass fan filling the space. There are fans in each bedroom with a large custom wood vent above each fan, and each bedroom has a north facing operable skylight to allow for natural stack effect ventilation.



“The Logix ICF system helped me to create a passive home, which if it goes according to plan, will not have any monthly heating or cooling costs.”

Casey M.,
Homeowner

RUNNER UP - SMALL RESIDENTIAL



CONTACT LOGIX ICF
 Scott Rudd
 sruud@formsystemsinc.com
 1-888-838-5038

888-415-6449
LogixICF.com
Info@LogixICF.com



LANDINGS POINT INDUSTRIAL PARK



TYPE OF BUILD Commercial **SIZE** 17,280 sq. ft.
LOCATION West Jordan, UT **YEAR BUILT** 2021

DESIGN HIGHLIGHTS

This commercial building design featured tall Logix ICF walls supporting a steel truss EPDM roof system.

CONSTRUCTION FACTS

Due to delays with the footing contractor, the scheduled ICF crew was lost due to scheduling conflicts. Thus this commercial ICF structure was basically built by a self-performing 3-man GC crew doing their first ICF build, at an excellent 0.625 mh/sq ft productivity rate.



RESILIENCE, SUSTAINABILITY & COMFORT NOTES

Once fully occupied this building used less than a third of the power consumed by the 3 other similar, but non-ICF buildings in the same industrial park.

“The challenges of Covid-19, material availability, rising costs and supply chain challenges were all successfully faced during the construction of the this project, This building stands out as an example of using more sustainable products to construct an more energy-efficient and well-built comfortable building.”

Dan D.
Dunn-Right Construction



WINNER - COMMERCIAL

CONTACT LOGIX ICF
 Lyle Hamilton
 lyle.hamilton@beaverplastics.com
 1-888-453-5961

888-415-6449
LogixICF.com
Info@LogixICF.com



CLASSY CHASSIS



TYPE OF BUILD Commercial **SIZE** 4,500 sq. ft.
LOCATION Williamsville, NY **YEAR BUILT** 2019

DESIGN HIGHLIGHTS

This is a fairly intricate structural design that was complicated by the number of massive windows, a lack of load-bearing interior walls and the tall 14' exterior walls. The design also featured arched openings and a stone veneer.

CONSTRUCTION FACTS

Speed of construction through the winter was a paramount factor and offset the delays when solid rock was hit at shallow depths during excavation. Building with Logix ICF allow the builder to construct this building during the winter thus allowing the facility to open for their busy season target date.



RESILIENCE, SUSTAINABILITY & COMFORT NOTES

The Logix ICF wall system maintains a comfortable environment for the staff during the winter and protects the critical water delivery systems within the facility from freezing.

//

“The site was transformed from a run down gas station to a quality facility that now enhances the beautiful neighborhood. It has raised the bar for future commercial development in the area.”

Mark Gifford,
Logix ICF Territory Manager



RUNNER UP - COMMERCIAL

CONTACT LOGIX ICF
 Kurtis Chapman
 kurtis@FormSolutions.ca
 1-888-706-7709

888-415-6449
LogixICF.com
Info@LogixICF.com



THE SUSTAINABLE HOME IN TUELON



TYPE OF BUILD	Residential	SIZE	2,925 sq. ft.
LOCATION	Tuelon, MB	YEAR BUILT	2021

DESIGN HIGHLIGHTS

The clients requires total accessibility to the garage, patio, sidewalks, dining & living area, and required the non-living areas and the garage to be as accessible and as comfortable as the main living space.

CONSTRUCTION FACTS

Logix ICF, Halo Exterra, Heat-Sheet and AMC Foam’s proprietary Styrobar were all used in the construction of this home which also featured R60 roof insulation and triple pane fiberglass windows. The ICF grade beam was used to support the two separated areas of the home, and Helix micro fibres were use to reinforce the concrete.



RESILIENCE, SUSTAINABILITY & COMFORT NOTES

The EnerGuide rating of this house is 76 GJ/year, which is 29% more energy efficient than comparable new homes. The air-tightness was tested at 1.24 ACH50.

“This project has set a precedent for our future custom home projects whereby a critical need of the client can be addressed while using the best construction materials in order to enhance their living experience.”

Sean M,
Hollyhock Construction



WINNER - LOGIX BRANDS SYSTEM-BUILT HOME

CONTACT LOGIX ICF
 Conrad Hoepfner, VP
 conrad@amcfoam.com
 1-877-789-7622

888-415-6449
LogixICF.com
Info@LogixICF.com