

# 30 WAYS TO Add Performance to your Logix XtraComfort™ Home

## OVERALL DESIGN

**30. CONDUCT THIRD PARTY DUCT & BLOWER DOOR TESTING**  
Ensures maximum performance of building envelope and HVAC systems

**29. INTEGRATE DESIGN FOR NATURAL DAYLIGHTING**  
Harnesses free natural lighting

**28. INTEGRATE PASSIVE SOLAR DESIGN**  
Harnesses free solar energy

**27. USE A RAIN BARREL**  
Re-purposes roof run-off water

## WINDOWS

**26. ENSURE WINDOWS ARE PROPERLY FLASHED**  
Protects from moisture damage

**25. INSTALL ENERGY-EFFICIENT WINDOWS**  
Low emittance, argon-filled or triple-paned windows reduce energy loss

**24. USE LOGIX PRO-BUCK™ IN ALL OPENINGS**  
Eliminates thermal bridging around window and door openings

## HVAC & UTILITIES

**23. INSTALL A PHOTOVOLTAIC ARRAY**  
Harnesses clean energy from the sun

**22. AVOID INEFFICIENT CRAWL SPACES**  
Increases energy-efficiency

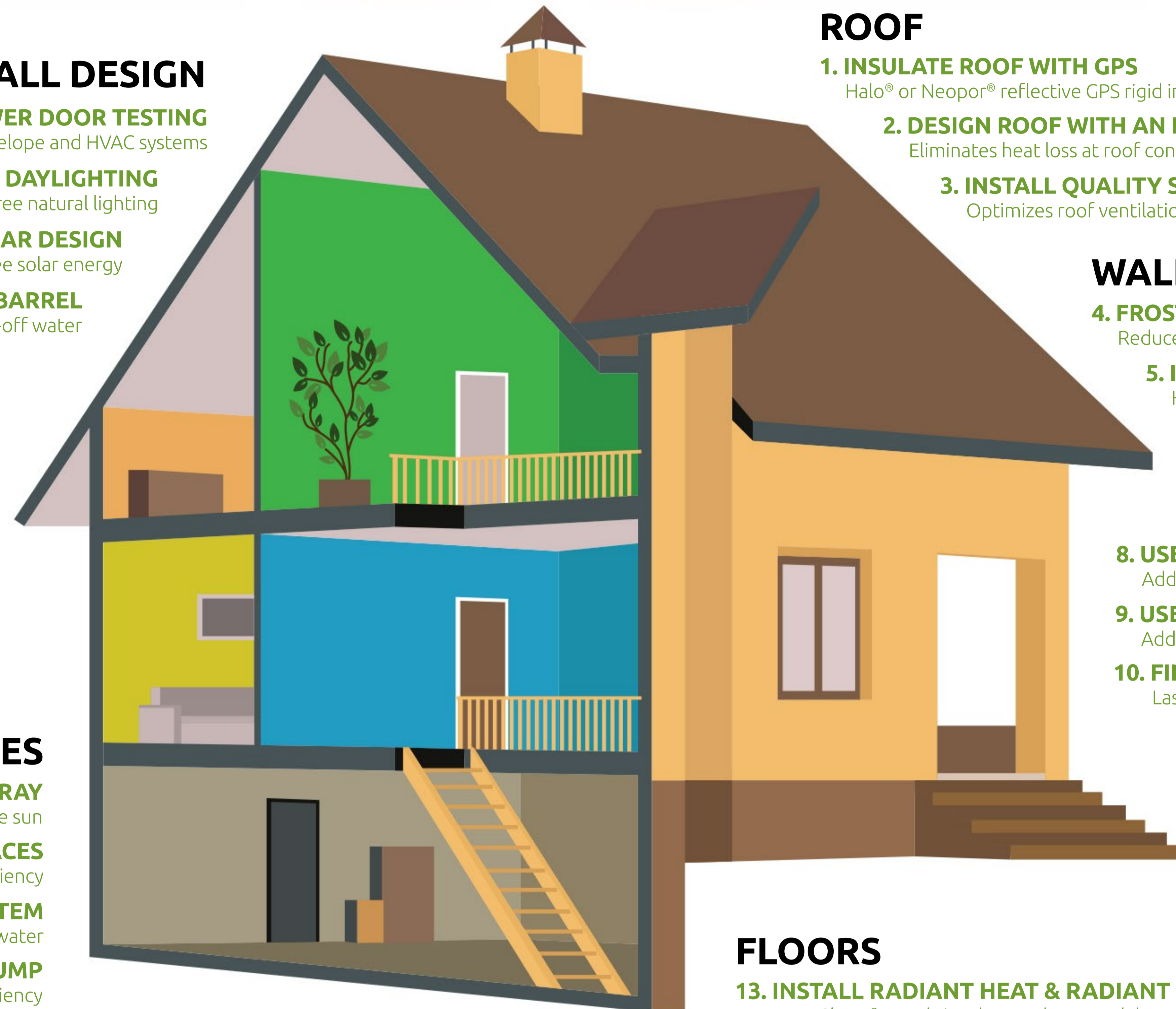
**21. INSTALL A SOLAR HOT WATER SYSTEM**  
Harnesses free solar energy to heat water

**20. INSTALL AN AIR SOURCE HEAT PUMP**  
Increases energy-efficiency

**19. DON'T OVERSIZE THE FURNACE**  
A properly sized furnace lowers first cost and operating costs

**18. CHOOSE A HIGH-EFFICIENCY HVAC SYSTEM**  
Uses less energy and reduces operating costs

**17. SELL BACK EXCESS ELECTRICITY TO THE GRID**  
Achieves a net zero energy home



## ROOF

**1. INSULATE ROOF WITH GPS**  
Halo® or Neopor® reflective GPS rigid insulation eliminates thermal bridging

**2. DESIGN ROOF WITH AN INSULATED RAISED HEEL**  
Eliminates heat loss at roof connection

**3. INSTALL QUALITY SOFFIT & RIDGE VENTS**  
Optimizes roof ventilation

## WALLS

**4. FROST PROTECT & SEAL ALL FOOTINGS**  
Reduces energy loss and keeps walls drier and healthier

**5. INSULATE WOOD-FRAMED GABLES WITH GPS**  
Halo® or Neopro® reflective GPS rigid insulation eliminates thermal bridging

**6. UPGRADE TO LOGIX PLATINUM SERIES**  
Provides an R-28 wall assembly thermal performance

**7. INSULATE THE TOPS OF LOGIX WALLS**  
Adds a thermal break

**8. USE FIBER REINFORCEMENT INSTEAD OF REBAR**  
Adds consistency in wall strength and controls cracks

**9. USE LOGIX D-RV INSERTS**  
Adds an extra R-8 to exterior walls

**10. FINISH WITH FIBER CEMENT SIDING OR COMPOSITE TRIM**  
Lasts longer, reduces decay and resists insects

## DOORS

**11. CHOOSE FIBERGLASS DOORS & WINDOWS**  
Increases life expectancy

**12. INSTALL SLAB THERMAL BREAKS IN DOOR OPENINGS**  
Prevents energy loss

## FLOORS

**13. INSTALL RADIANT HEAT & RADIANT PANELS IN ALL FLOORS**  
Heat-Sheet® Panels insulate and save on labor

**14. USE ENGINEERED OR CONCRETE FLOOR SYSTEMS**  
Reduces sound transmission between floors

**15. INSULATE UNDER SLAB WITH GPS**  
Halo® or Neopor® laminated GPS rigid insulation adds up to R-10 or more thermal resistance

**16. INSTALL A RADON DIFFUSION SYSTEM**  
Prevents sickness from long-term radon exposure

**LOGIX**<sup>®</sup>  
INSULATED CONCRETE FORMS

Build Anything Better.

888.415.6449 ▪ [LogixICF.com](http://LogixICF.com)

The suggestions in this document are intended to be thought-starters only. Be sure to obtain the approval of your local building department, your designers and builder before implementing any suggestion contained herein. Logix Insulated Concrete Forms Ltd. does not warrant or in any way guarantee the successful performance of any suggestion contained in this document.

Copyright 2016 Logix Insulated Concrete Forms Ltd.