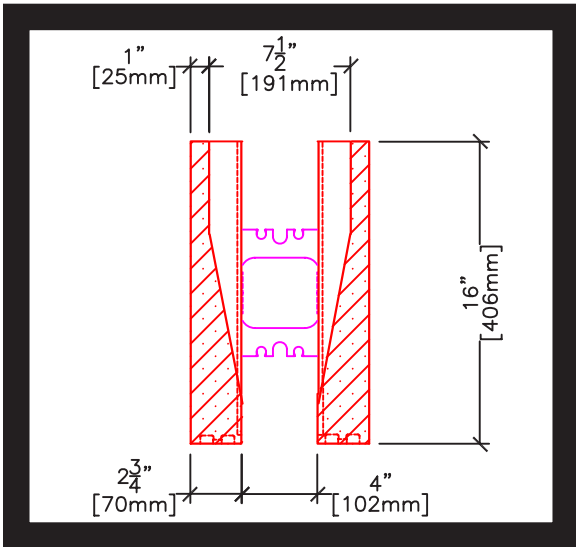


**Figure 1: LOGIX 4" Double Taper Top Form**



**Figure 2: Cross section of the LOGIX 4" Double Taper Top Form.**

Logix ICF provides 4" ICF forms for the construction of 4" thick concrete walls in residential and commercial buildings. Responding to industry feedback Logix has introduced the 4" Double Taper Top Form.

The 4" Double Taper Top Form is a variation to the 4" Standard Form, in which the 2.75" thick panels taper to 1" thick at the top side of the form (see **Figures 1 & 2**). This simple yet efficient form design offers two main benefits, when used as the top or final course in a 4" Logix wall.

1. A wider support for roof and flooring systems - can fully support sill plates upto 8" (203mm) wide (see **Figure 3**)
2. A wider opening for concrete pours - makes placing concrete in 4" thick ICF walls easier by increasing the opening from 4" to 7.5" (102 to 190mm). See **Figure 2**.

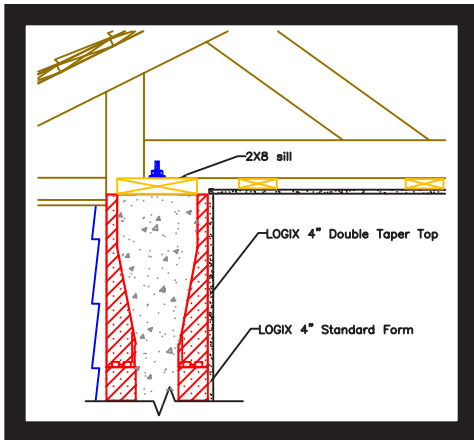


Figure 3: LOGIX 4" Double Taper Top supporting 2x8 sill plate.

Logix 4" Double Taper Top Forms can be easily cut to create corner forms (see **Section 2.7.4** of the Logix Product Manual). Double Taper Top Forms are also available for 6.25" LOGIX ICF walls.

**NOTE:** Reinforcing details for wall and lintels, can be found in **Section 6, Engineering**, of the Logix Product Manual. For more information on the 4" Double Taper Top or other Logix products, accessories, and technical information visit [www.logixicf.com](http://www.logixicf.com).