

# 7.1.5 – CITY OF NEW YORK - MEA (MATERIALS & EQUIPMENT ACCEPTANCE)



NYC Department of Buildings  
280 Broadway, New York, NY 10007  
Patricia Lancaster, FAIA, Commissioner  
(212) 566-5000, TTY: (212) 566-4769

## Report of Materials and Equipment Acceptance Division

Pursuant to Administrative Code Section 27-131, the following equipment or material has been found acceptable for use subject to the terms and conditions contained herein.

### MEA 273-04-M

**Manufacturer:** Logix Insulated Concrete Forms Ltd., 840 Division Street, Cobourg, Ontario, Canada K9A 4J9.

**Trade Name(s):** Logix.

**Product:** Fire rated exterior insulation concrete forms wall assembly for combustible construction.

**Pertinent Code Section(s):** 27-297, 27-107, 27-133.

**Prescribed Test(s):** RS 5-5 (ASTM E84), Toxicity, RS 5-2 (ASTM 119).

**Laboratory:** Intertek Testing Services Ltd.

**Test Report(s):** Intertek Testing Services Test Report 3020964(b), dated April 24, 2002; Intertek Testing Services Test Report 3020964, dated April 8, 2002; Intertek Testing Services Test Report 3020964(a), dated June 12, 2002. Intertek letter dated November 11, 2003 and SwRI Project No. 01.10935.02.045 dated November 23, 2005.

**Description:** The Logix Insulated Concrete Forms are stay-in-place concrete forms for reinforced concrete wall systems. The wall system shall be constructed using a minimum ½ inch thick gypsum drywall to achieve the required fire resistance rating, and installed as shown in Figure 1.

Form Size (Wall Thickness)	Fire Rating
4"	2 hours
6.25"	3 hours
8" and larger	4 hours

Build Anything Better.	www.logixicf.com 7 – 19	
------------------------	----------------------------	--

## 7.1.5 – CITY OF NEW YORK - MEA (MATERIALS & EQUIPMENT ACCEPTANCE) CONTINUED

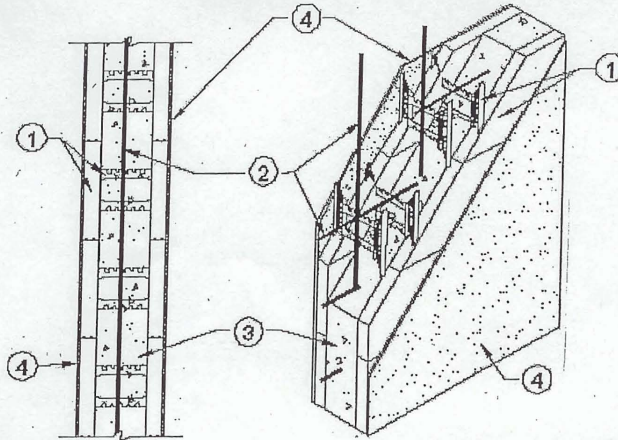


Figure 1. Logix Insulated Concrete Form wall system

1. **Insulated Concrete Forms** – Standard form units comprised of two 48" x 16" x 2.75" thick expanded polystyrene (EPS) panels linked by polypropylene webs spaced at 8" on center. The widths of the wall cavity are 4", 6.25", and 10". Height adjusters consist of 24" long, by 4" high, by 2.75" thick flat EPS panels. End caps are 16", 2.75" thick and range in widths are 4", 6.25", 8" and 10". For a complete listing of products visit the Logix website, [www.logixicf.com](http://www.logixicf.com). Logix ICF's bear the Warnock Hersey certification mark.
2. **Steel Reinforcement** – steel reinforcement shall be placed as per the Logix ICF Product Manual, or as per local engineering design and building code requirements.
3. **Normal Weight Concrete** – 145 ± 5 lb/ft<sup>3</sup> density, 2900 psi compressive strength.
4. **Gypsum Board** – Classified or unclassified ½ " thick, 48" wide gypsum wallboard fastened to flanges of polypropylene webs with 1.5" long drywall screws spaced on center 12" vertically and 16" horizontally. Minimum weight 1.6 psf. Joints covered with joint compound. Screwheads covered with joint compound.

**Terms and Conditions** – The above described wall assembly consisting of exterior concrete form and other components be accepted as having fire resistance classification listed above for combustible construction only, when installation complies with the applicable New York City Codes, Rules and Regulations and in particular with Section 27-297A, Tables 3-4, and 4-2 of the Building Code, for 1, 2 or 3 family, when interior and exterior of the concrete form is covered with accepted one hour fire rated material.

This acceptance does not include structural adequacy of wall design, which must be certified by a P.E., or R.A. for particular structures for compliance with the Building Code prior to plan examination by department engineers.

All shipments and deliveries of such materials shall be accompanied by a certificate or label certifying that the materials shipped or delivered are equivalent to those tested and acceptable for use, as provided for in Section 27-131 of the Building Code.

Final Acceptance February 10, 2006  
Examined By Sium Derkhdam