


2.6 – JOBSITE EFFICIENCY



An efficient jobsite means a faster and safer installation, and ultimately a higher quality finished project.

- Keep all materials and tools outside of the footing area until the chalk lines have been snapped and the wall layout is complete. Generally, construction is accomplished from within the perimeter of the structure.
- When wall layout is complete, place forms at least 7 feet (2.134 m) inside the perimeter of the footings or slab to accommodate the wall alignment system.
- Space skids of standard forms around the inside of the entire perimeter.

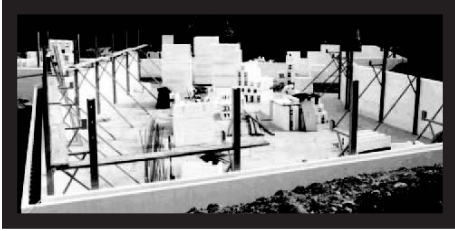
ALERT: When placing courses of forms, always take  forms from the closest skid. This will eliminate the effects of normal manufacturing variations between skids.

- Periodic checking of dimensions ensures accurate wall construction.



2.6 – JOBSITE EFFICIENCY

CONTINUED



- Additional materials that should be located within the perimeter:
 - Window and door bucks
 - Rebar (straight or pre-bent)
 - Alignment system
 - Approved scaffold planks
 - Tools