

NOTES:

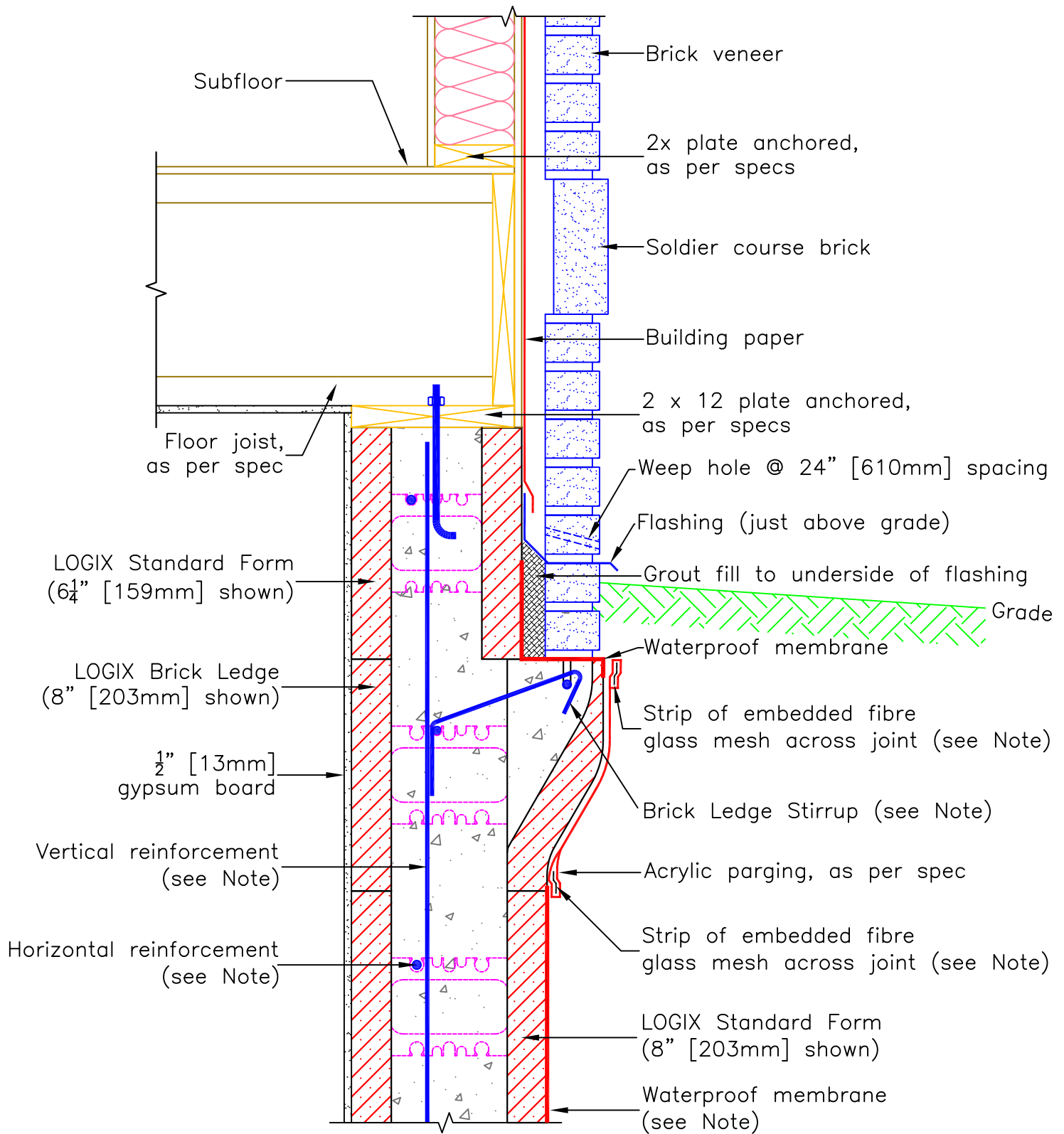
1. See Section 6 – Engineering in the LOGIX Design Manual or the LOGIX Field Manual for reinforcement details.
2. See Drawing 5.10.16 for stirrup details for Transition Form.
3. See Drawing 5.10.7 for stirrup details for Brick Ledge Form.
4. See Drawing 5.10.44 for waterproof detail for Brick Ledge Form.



The drawing represented herein is to be used as a reference guide only; the user shall check to ensure the drawing meets local building codes and construction practices by consulting local building officials and professionals, including any additional requirements. Logix reserves the right to make changes to the drawing without notice and assumes no liability in connection with the use of the drawing including modification, copying or distribution.

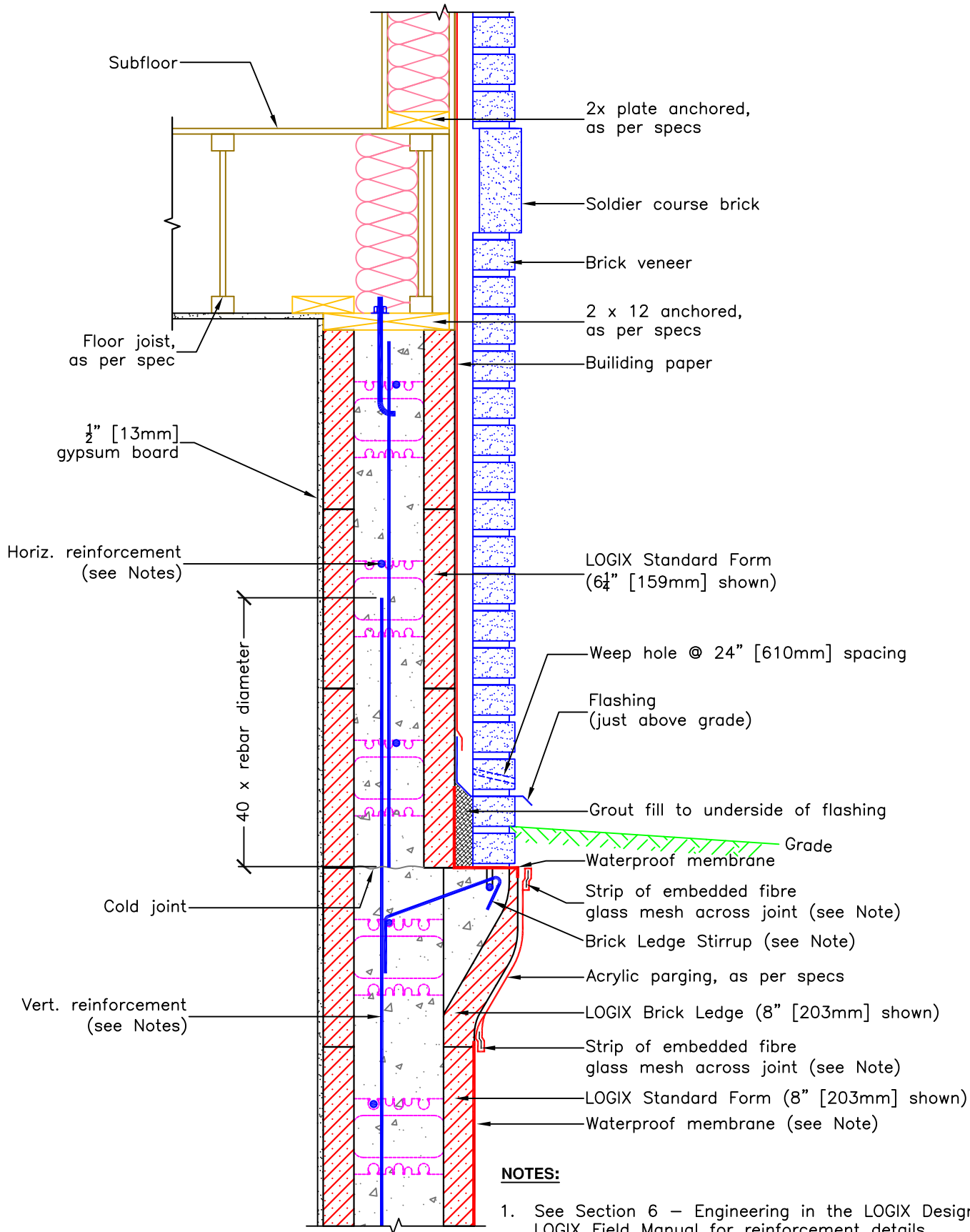
Drawing: 5.8.16	Date: Jul 30/13	1/4
--------------------	--------------------	-----

Title:
BELOW GRADE BRICK VENEER



NOTES:

1. See Section 6 – Engineering in the LOGIX Design Manual or the LOGIX Field Manual for reinforcement details.
2. See Drawing 5.10.7 for stirrup details for Brick Ledge Form.
3. See Drawing 5.10.44 for waterproof detail for Brick Ledge Form.



NOTES:

1. See Section 6 – Engineering in the LOGIX Design Manual or the LOGIX Field Manual for reinforcement details.
2. See Drawing 5.10.7 for stirrup details for Brick Ledge Form.
3. See Drawing 5.10.44 for waterproof detail for Brick Ledge Form.

