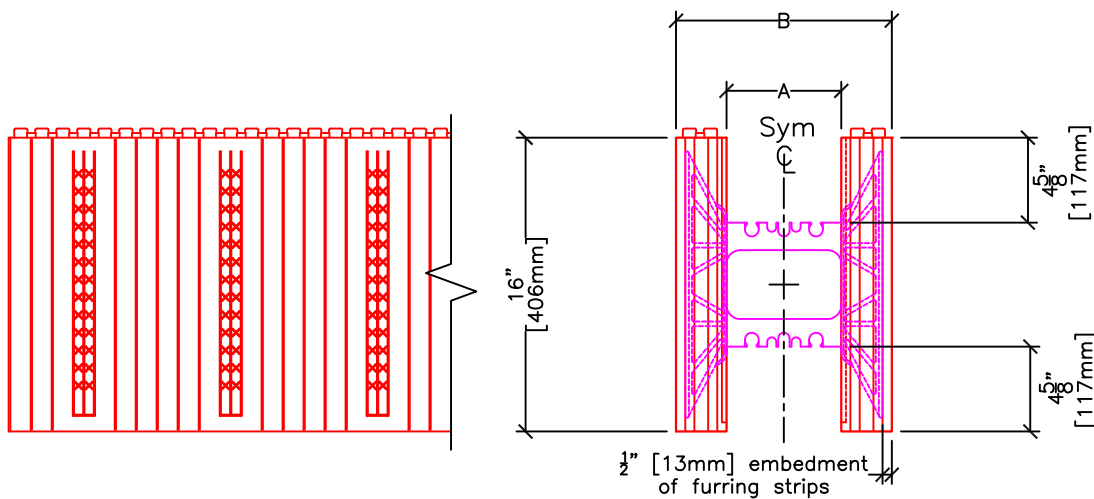
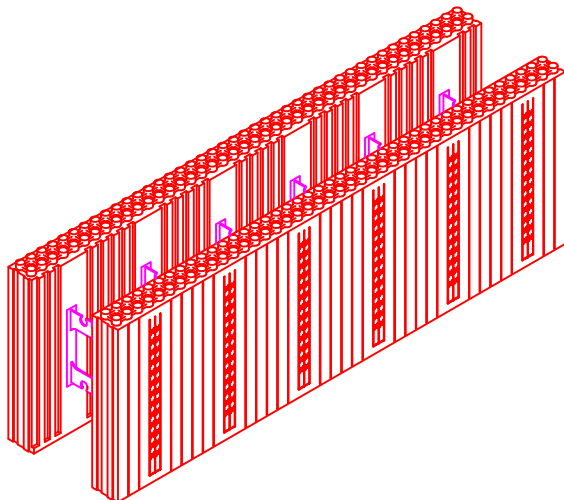


PLAN VIEW



SIDE ELEVATION

END VIEW



| | FORM SIZES, in (mm) | | | | |
|-------------------------------|---------------------|-------------|------------|------------|------------|
| | 4 (102) | 6.25 (159) | 8 (203) | 10 (254) | 12 (305) |
| Dimension A, in (mm) | 4 (102) | 6.25 (159) | 8 (203) | 10 (254) | 12 (305) |
| Dimension B, in (mm) | 9.5 (241) | 11.75 (298) | 13.5 (343) | 15.5 (394) | 17.5 (445) |
| Conc. Vol. (y ³) | 0.066 | 0.103 | 0.132 | 0.165 | 0.198 |
| Conc. Vol. (ft ³) | 1.778 | 2.778 | 3.556 | 4.444 | 5.333 |
| Conc. Vol. (m ³) | 0.050 | 0.079 | 0.101 | 0.126 | 0.151 |

NOTES:

1. Wall area per block or panel = 5.333 ft²
2. Forms are available as assembled (LOGIX PRO) or unassembled (or knock-down) form blocks (LOGIX KD Product drawings).
3. Concrete core thickness wider than 12" (305mm) are available using LOGIX Xtenders (See Logix Xtender Product drawing).
4. 6 1/4" [159mm] LOGIX Form shown.