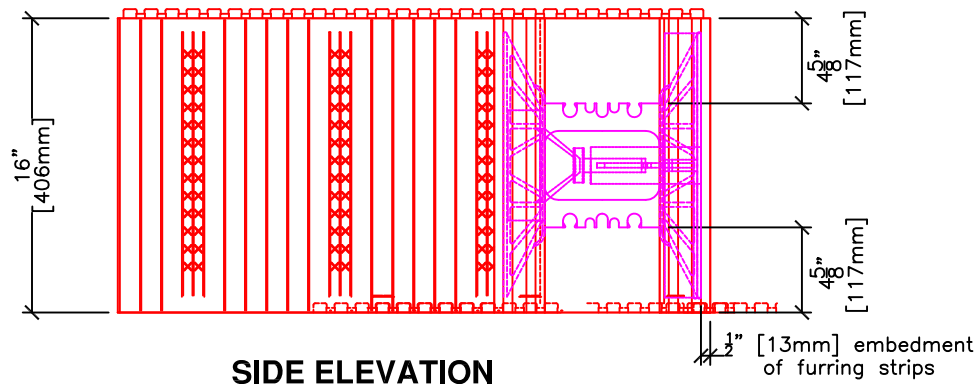
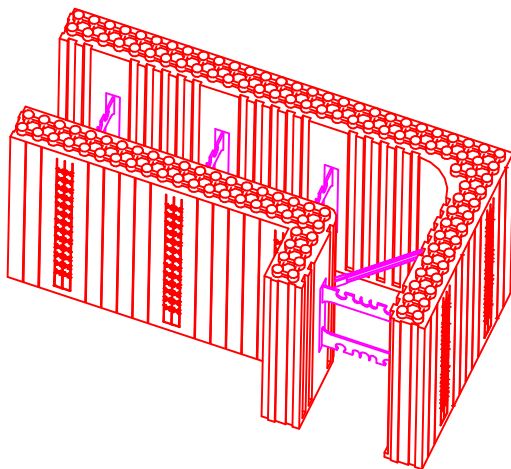


**PLAN VIEW**



**SIDE ELEVATION**



	FORM SIZES, in (mm)			
	4 (102)	6.25 (159)	8 (203)	10 (254)
Dimension A, in (mm)	4 (102)	6.25 (159)	8 (203)	10 (254)
Dimension B, in (mm)	9.5 (241)	11.75 (298)	13.5 (343)	15.5 (394)
Dimension C, in (mm)	3.5 (89)	3.375 (86)	2.25 (57)	2.125 (54)
Dimension D, in (mm)	7.67 (195)	7.67 (195)	6.125 (156)	5.875 (149)
Dimension E, in (mm)	32.125 (816)	32.125 (816)	32.125 (816)	34.5 (876)
Dimension F, in (mm)	16.125 (410)	16.125 (410)	16.125 (410)	18.5 (470)
Conc. Vol. (y <sup>3</sup> )	0.053	0.078	0.095	0.128
Conc. Vol. (ft <sup>3</sup> )	1.419	2.096	2.558	3.456
Conc. Vol. (m <sup>3</sup> )	0.040	0.059	0.072	0.098
Outside Corner Wall Area (ft <sup>2</sup> )	5.361	5.361	5.361	5.889
Inside Corner Wall Area (ft <sup>2</sup> )	3.250	2.750	2.361	2.444

**NOTES:**

1. Forms are available as assembled (LOGIX PRO) or unassembled (or knock-down) form blocks (LOGIX KD Product drawings).
2. Concrete core thickness wider than 12" (305mm) are available using LOGIX Xtenders (See Logix Xtender Product drawing).
3. 6 1/4" [159mm] LOGIX Corner Form shown.