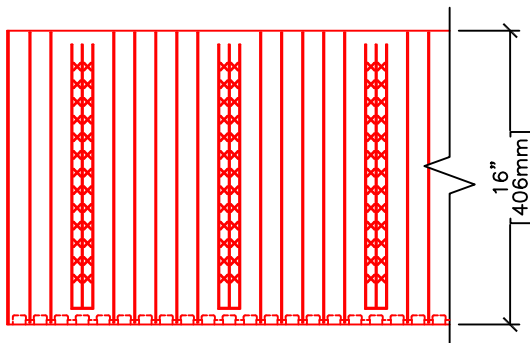
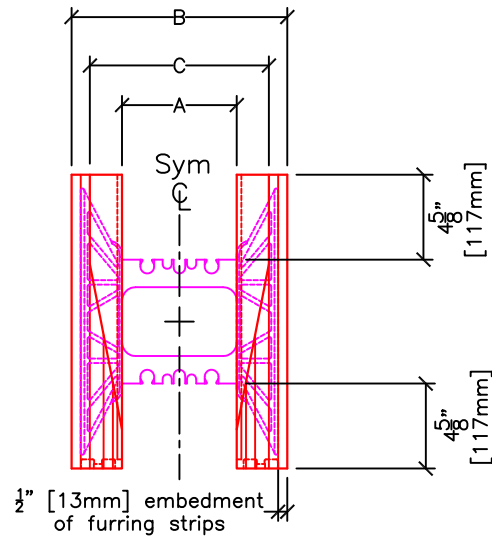


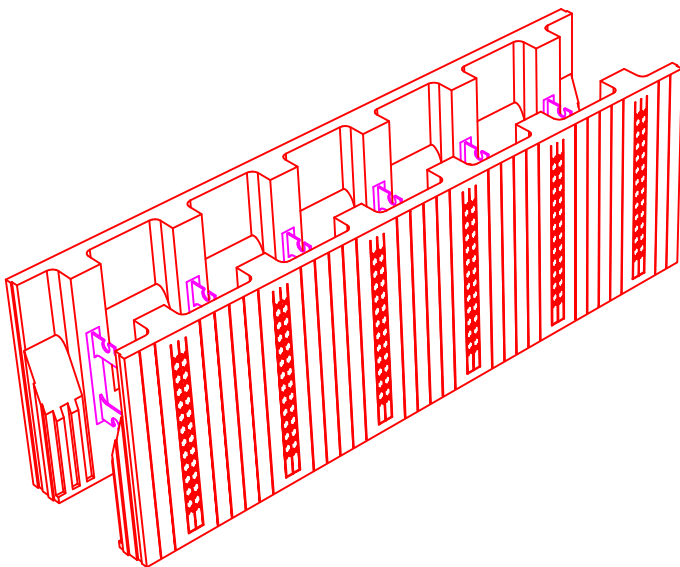
**PLAN VIEW**



**SIDE ELEVATION**



**END VIEW**



	FORM SIZES, in (mm)				
	4 (102)	6.25 (159)	8 (203)	10 (254)	12 (305)
Dimension A, in (mm)	4 (102)	6.25 (159)	8 (203)	10 (254)	12 (305)
Dimension B, in (mm)	9.5 (241)	11.75 (298)	13.5 (343)	15.5 (394)	17.5 (445)
Dimension C, in (mm)	7.5 (191)	9.75 (248)	11.5 (292)	13.5 (343)	15.5 (394)
Conc. Vol. (y <sup>3</sup> )	0.090	0.127	0.155	0.188	0.221
Conc. Vol. (ft <sup>3</sup> )	2.420	3.420	4.197	5.086	5.975
Conc. Vol. (m <sup>3</sup> )	0.069	0.097	0.119	0.144	0.169

**NOTES:**

1. Wall area per block or panel = 5.333 ft<sup>2</sup>
2. Forms are available as assembled (LOGIX PRO) or unassembled (or knock-down) form blocks (LOGIX KD Product drawings).
3. Concrete core thickness wider than 12" (305mm) are available using LOGIX Xtenders (See Logix Xtender Product drawing).
4. 6 1/4" [159mm] LOGIX Form shown.