

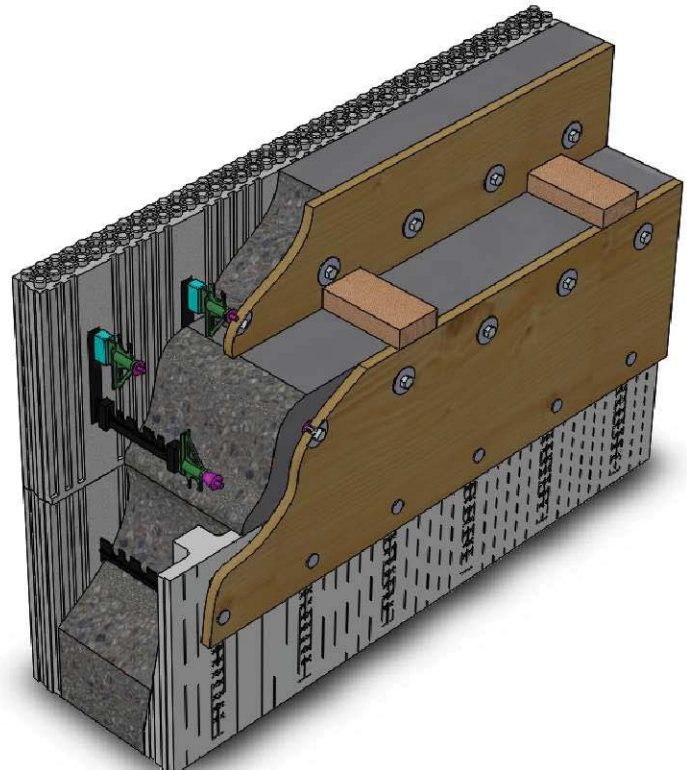
Temporary formwork:
 8" high x $\frac{3}{4}$ " thick ply
 w/ $\frac{1}{4}$ " x $2\frac{1}{2}$ " long lag screws & 1" flat washers fastened
 to Logix XP-1 side web @ 8" o/c.

WALL CHART

ICF Form Size, in	Resulting Curb Thickness, in	Resulting Bearing Length, in	KD Web Tie Required, in
4	n/a	n/a	n/a
6.25	9	5	6.25
8	10.75	6.75	8
10	12.75	8.75	10
12	14.75	10.75	12

Logix XP-1 side web
 w/ 1" cone cut to suit
 KD panel.

Temporary formwork:
 ~16" high x $\frac{3}{4}$ " thick ply w/ $\frac{1}{4}$ " x $3\frac{1}{2}$ " long lag screws &
 1" flat washers fastened to Logix XP-1 side web @ 8" o/c.
 Extend below KD panel and fasten to ICF form below.
 See Note 2.



NOTES:

1. Dimensions shown are for 8" Logix ICF with 10.75" concrete curb thickness, which provides a 6.75" bearing length. However, these dimensions vary depending on ICF wall sizes. Refer to Wall Chart table for available sizes, and corresponding dimensions.
2. Depth of corbel edge can be greater than 8" by extending the XP-1 system, as required.
3. For more information refer to the Logix XP-1 Installation Guide.



www.logixicf.com
 1-866-944-0153

The drawing represented herein is to be used as a reference guide only; the user shall check to ensure the drawing meets local building codes and construction practices by consulting local building officials and professionals, including any additional requirements. Logix reserves the right to make changes to the drawing without notice and assumes no liability in connection with the use of the drawing including modification, copying or distribution.

Drawing:
 7.1

Date:
 May 20/18

Page:
 1/7

Title:

**LOGIX XP-1 CURB BLOCK
 WITH CORBEL LEDGE**