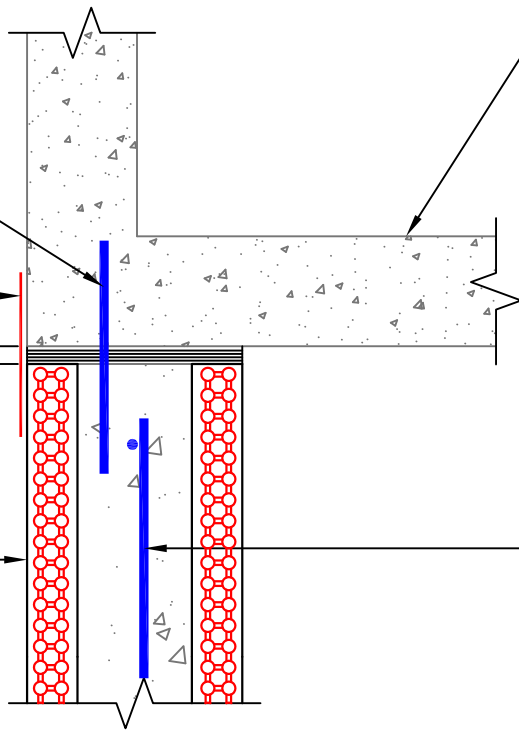


Dowels placed between walls to match horizontal rebar (dowels embedded into the existing concrete wall as per specs)

Waterproofing membrane

Expansion joint if required

6 1/4" LOGIX Standard Forms shown



Existing concrete wall

Wall reinforcement (see Notes)

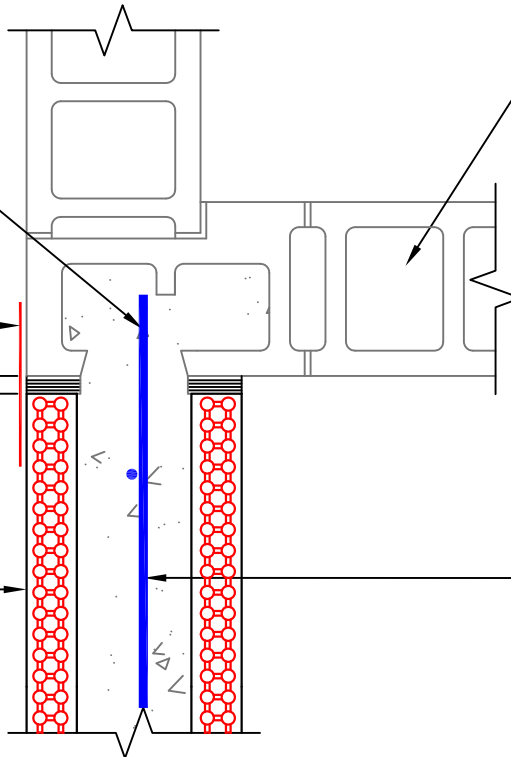
**5.10.1 - LOGIX WALL ATTACHMENT TO EXISTING CONCRETE WALL**

Break face shells and extend horizontal rebar into existing concrete cavity

Waterproofing membrane

Expansion joint if required

6 1/4" LOGIX Standard Forms shown



Existing concrete block wall

Wall reinforcement (see Notes)

**5.10.2 - LOGIX WALL ATTACHMENT TO EXISTING CONCRETE MASONRY WALL**

**NOTES:**  
See Section 6 – Engineering in the LOGIX Product Manual for reinforcement details.



The drawing represented herein is to be used as a reference guide only; the user shall check to ensure the drawing meets local building codes and construction practices by consulting local building officials and professionals, including any additional requirements. Logix reserves the right to make changes to the drawing without notice and assumes no liability in connection with the use of the drawing including modification, copying or distribution.

Drawing:  
5.2.2.5/6

Date:  
Jul 30/13

Title:  
LOGIX WALL ATTACHMENT TO EXISTING CONCRETE & MASONRY WALLS