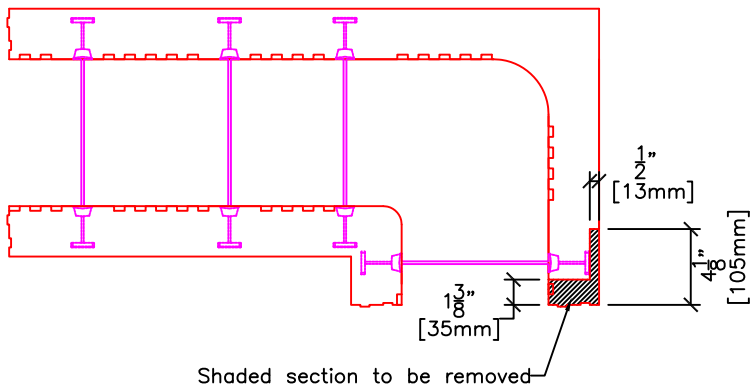
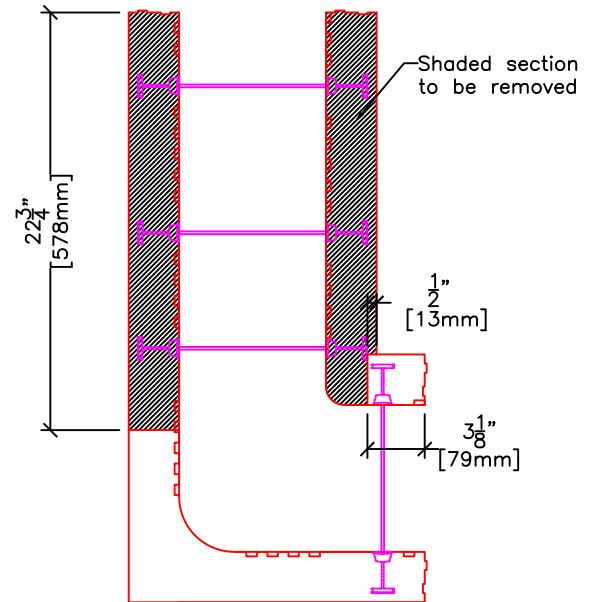


PLAN VIEW



DETAIL A



DETAIL B

NOTES:

1. To maintain form integrity apply wooden straps at joints.
2. Creating a 12" (305mm) jog might create misaligned interlocks – cut interlocks where misalignment occurs.
3. To create jog in other direction cut opposite forms.
4. Interlocks not shown for clarity.