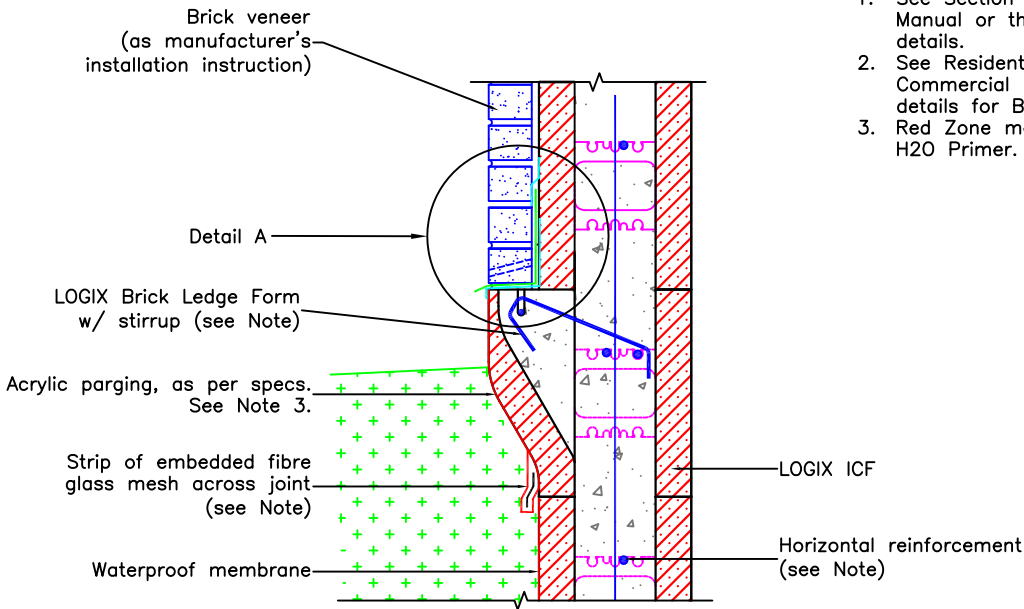
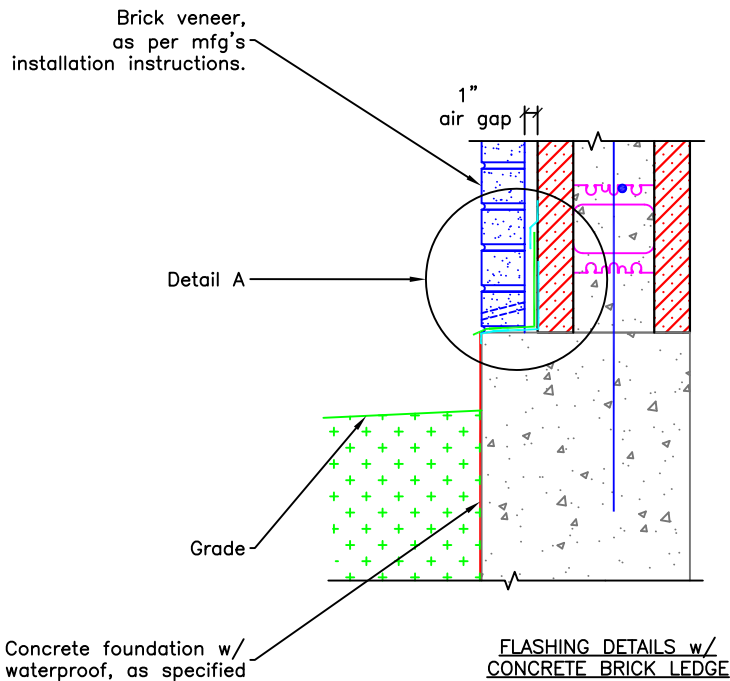


**NOTES:**

1. See Section 6 – Engineering in the LOGIX Design Manual or the LOGIX Field Manual for reinforcement details.
2. See Residential Drawing 5.10.6 to 5.10.8 or Commercial Drawing 5.9.5 to 5.9.7 for stirrup details for Brick Ledge Forms.
3. Red Zone membrane must be adhered with Resisto H2O Primer.

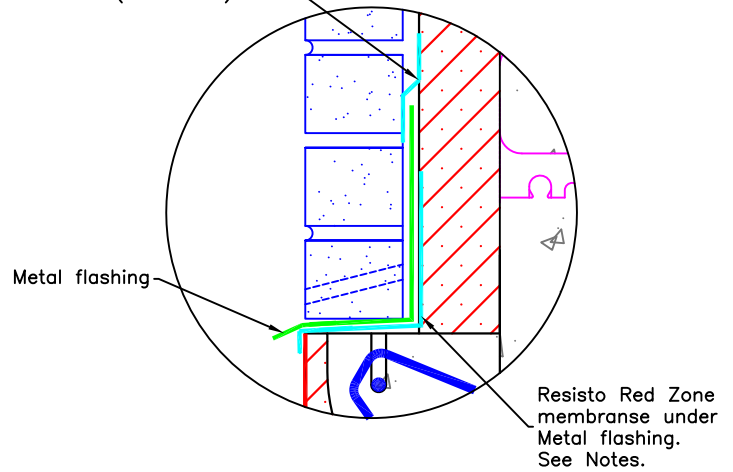


FLASHING DETAILS w/  
LOGIX BRICK LEDGE



FLASHING DETAILS w/  
CONCRETE BRICK LEDGE

Resisto Red Zone  
membrane strip  
applied over termination  
of metal flashing.  
(see Notes)



DETAIL A:  
TYPICAL WATERPROOFING  
DETAIL