

Formed prefinished galv. coping over two layers of ext. grade plywood, anchor plywood to top of block w/ countersunk self-tapping conc. screw

Horizontal joint reinforcing top & bottom of wall only

Drip edge

LOGIX ICF wall (6 $\frac{1}{4}$ " shown)

Membrane flashing to extend up & over plywood plate

Exterior grade treated plywood

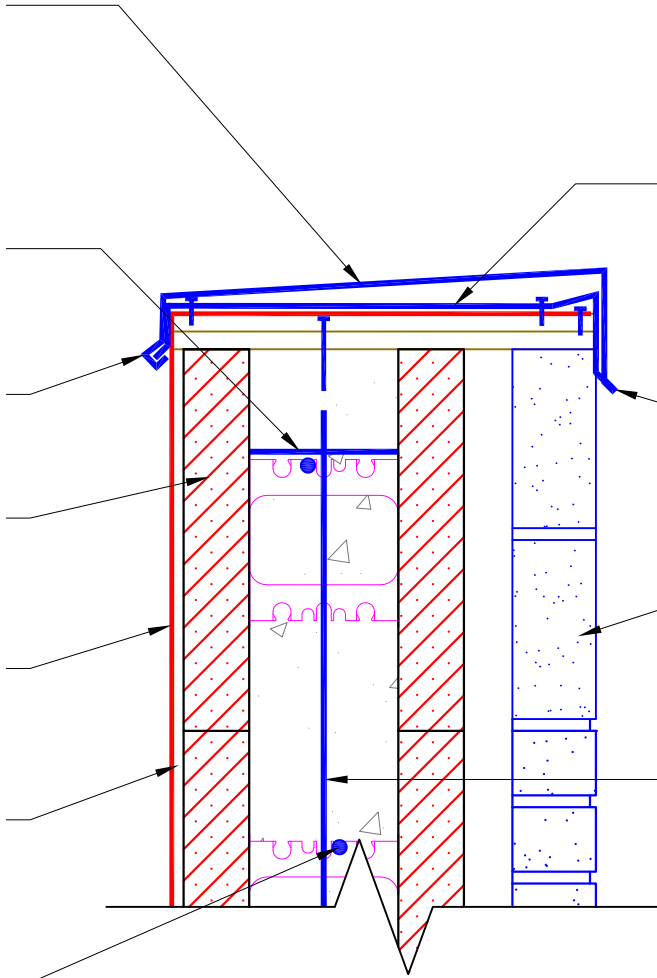
Horizontal reinforcement (see Notes)

Galv. anchor clip

Drip edge

Parapet wall

Vertical reinforcement (see Notes)



NOTES:

1. See Section 6 - Engineering in the LOGIX Design Manual for reinforcement details.