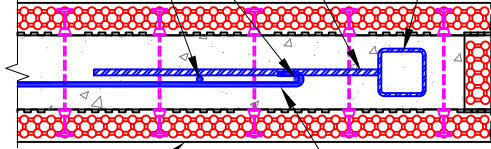


1/2" dia x 24" dba at specified spacing each side of column. Align w/ horizontal wall reinf.

2 vertical bars each side of column to match vertical wall reinforcement

Steel column, as spec'd



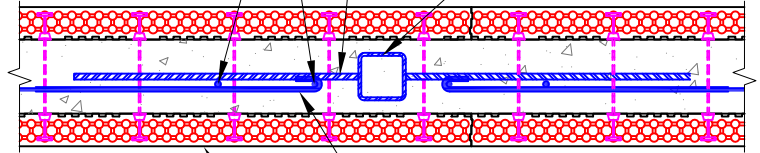
Logix ICF (6.25" shown)

Terminate horizontal reinf. w/ 180° hook.

1/2" dia x 24" dba at specified spacing each side of column. Align w/ horizontal wall reinf.

2 vertical bars each side of column to match vertical wall reinforcement

Steel column, as spec'd



Terminate horizontal reinf. w/ 180° hook.

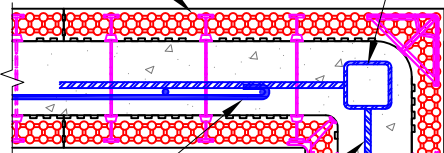
Logix ICF (6.25" shown)

1/2" dia x 24" dba at specified spacing each side of column. Align w/ horizontal wall reinf.

2 vertical bars

Logix ICF (6.25" shown)

Steel column, as spec'd



Terminate horizontal reinf. w/ 180° hook.

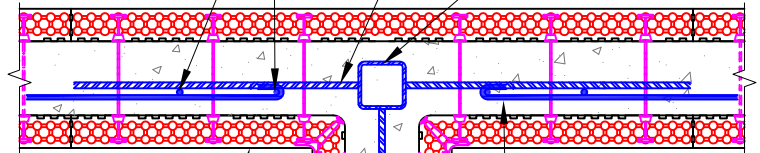
1/2" dia x 24" dba at specified spacing each side of column. Align w/ horizontal wall reinf.

2 vertical bars each side of column to match vertical wall reinforcement

1/2" dia x 24" dba at specified spacing each side of column. Align w/ horizontal wall reinf.

2 vertical bars each side of column to match vertical wall reinforcement

Steel column, as spec'd



Logix ICF (6.25" shown)

Terminate horizontal reinf. w/ 180° hook.