

Formed prefinished galv. coping over two layers of ext. grade plywood, anchor plywood to top of block w/ countersunk self-tapping conc. screw

Galv. anchor clip

Drip edge

Drip edge

LOGIX ICF wall (6 1/4" shown)

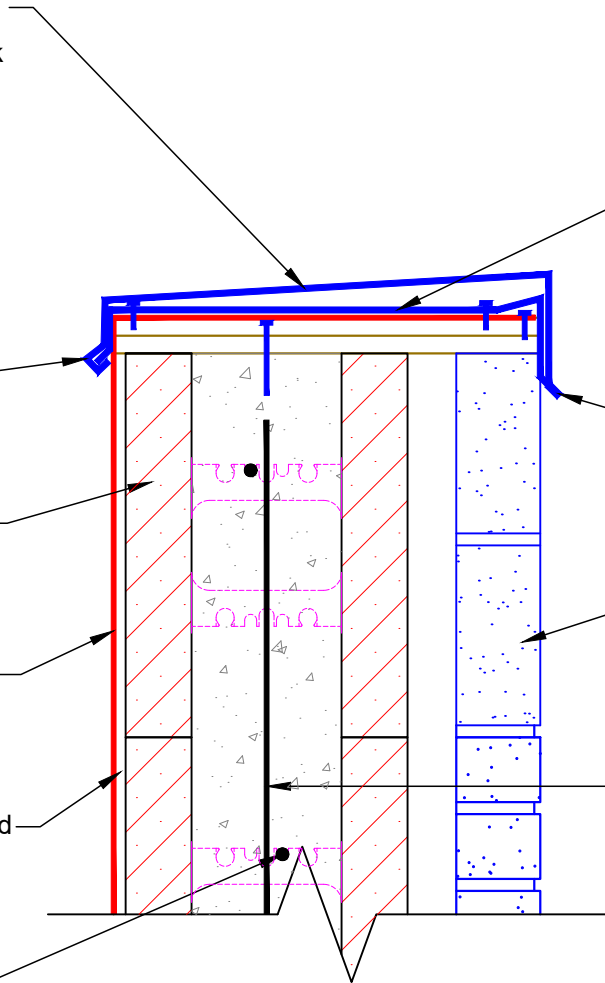
Parapet wall

Membrane flashing to extend up & over plywood plate

Vertical reinforcement (see Notes)

Exterior grade treated plywood

Horizontal reinforcement (see Notes)



www.logixicf.com
1-866-944-0153

The drawing represented herein is to be used as a reference guide only; the user shall check to ensure the drawing meets local building codes and construction practices by consulting local building officials and professionals, including any additional requirements. Logix reserves the right to make changes to the drawing without notice and assumes no liability in connection with the use of the drawing including modification, copying or distribution.

Drawing:
5.8.6.3

Date:
Jul 30/13

Page:
1/1

Title:

LOGIX PARAPET: METAL COPING WITH BRICK VENEER