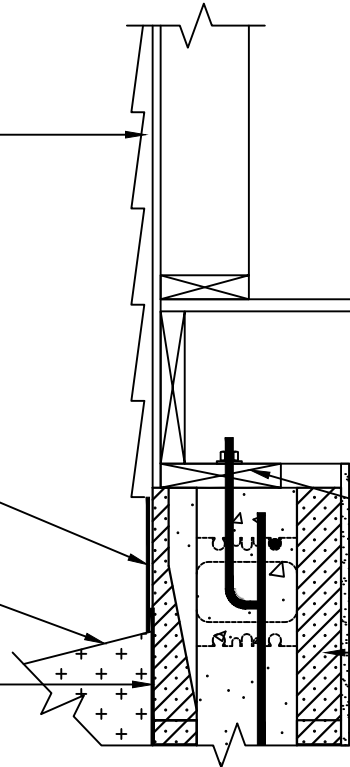


Siding or other exterior finish, as per specs

Acrylic parging, as per specs

Finished grade

Waterproofing



**NOTES:**

See Section 6 – Engineering in the LOGIX Product Manual for reinforcement details.

2"x8" plate c/w sill gasket & anchor bolt, as per specs

Use 6 1/4" LOGIX Taper Top (or 6 1/4" LOGIX Double Taper Top) for top course or where sill plates are located



Build Anything Better.

www.logixcf.com  
1-866-944-0153

The drawing represented herein is to be used as a reference guide only; the user shall check to ensure the drawing meets local building codes and construction practices by consulting local building officials and professionals, including any additional requirements. Logix reserves the right to make changes to the drawing without notice and assumes no liability in connection with the use of the drawing including modification, copying or distribution.

Drawing:  
5.6.2.3

Date:  
Jul 30/13

Title:  
2X8 TOP PLATE OVERHUNG WITH TAPER TOP