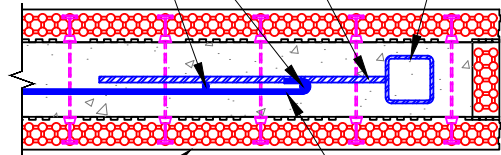


1/2" dia x 24" dba at specified spacing each side of column. Align w/ horizontal wall reinf.

2 vertical bars each side of column to match vertical wall reinforcement

Steel column, as spec'd



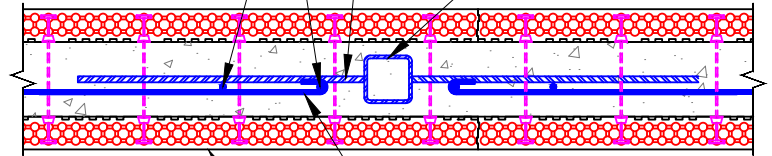
Logix ICF (6.25" shown)

Terminate horizontal reinf. w/ 180° hook.

1/2" dia x 24" dba at specified spacing each side of column. Align w/ horizontal wall reinf.

2 vertical bars each side of column to match vertical wall reinforcement

Steel column, as spec'd

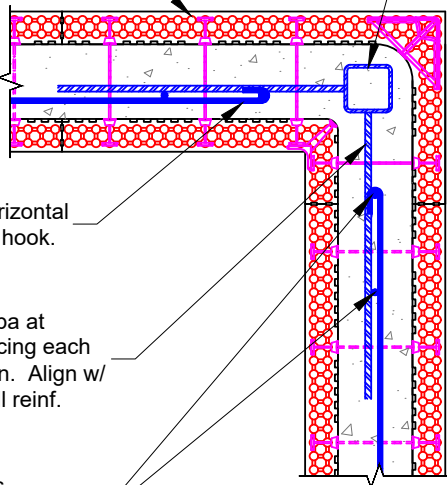


Terminate horizontal reinf. w/ 180° hook.

Logix ICF (6.25" shown)

Logix ICF (6.25" shown)

Steel column, as spec'd



Terminate horizontal reinf. w/ 180° hook.

1/2" dia x 24" dba at specified spacing each side of column. Align w/ horizontal wall reinf.

2 vertical bars each side of column to match vertical wall reinforcement

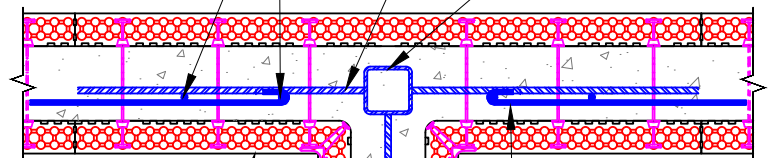
1/2" dia x 24" dba at specified spacing each side of column. Align w/ horizontal wall reinf.

2 vertical bars

1/2" dia x 24" dba at specified spacing each side of column. Align w/ horizontal wall reinf.

2 vertical bars each side of column to match vertical wall reinforcement

Steel column, as spec'd



Logix ICF (6.25" shown)

Terminate horizontal reinf. w/ 180° hook.



Build Anything Better.

www.logixicf.com
1-866-944-0153

The drawing represented herein is to be used as a reference guide only; the user shall check to ensure the drawing meets local building codes and construction practices by consulting local building officials and professionals, including any additional requirements. Logix reserves the right to make changes to the drawing without notice and assumes no liability in connection with the use of the drawing including modification, copying or distribution.

Drawing:
5.16.2.3

Date:
Nov 24/13

Title:

EMBEDDED STEEL COLUMN
IN LOGIX ICF