

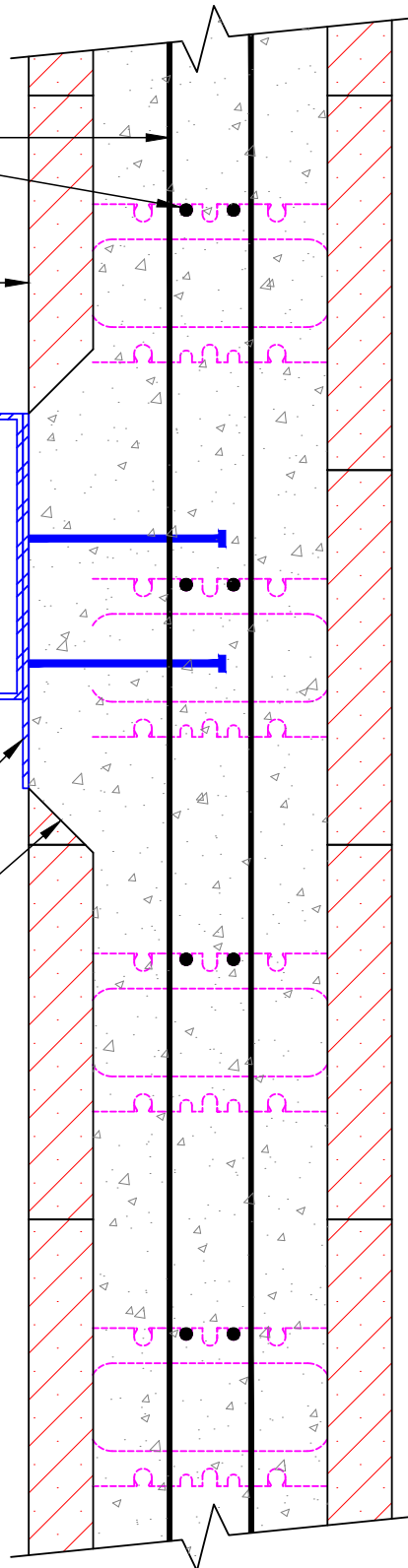
Wall reinf. See Notes.

Logix ICF (10" shown)

Structural steel,
as spec'd

Steel plate, as spec'd.

Field trim ICF
to suit.



NOTES:

1. Logix prescriptive engineering is available under Section 6 of the Logix Design or Field Manual.
2. A protective cover, such as tarp, should be placed over Logix form panels in the vicinity where on-site welding or torch work is conducted.



Build Anything Better.

www.logixicf.com
1-866-944-0153

The drawing represented herein is to be used as a reference guide only; the user shall check to ensure the drawing meets local building codes and construction practices by consulting local building officials and professionals, including any additional requirements. Logix reserves the right to make changes to the drawing without notice and assumes no liability in connection with the use of the drawing including modification, copying or distribution.

Drawing:
5.15.2.4

Date:
Jul 30/13

Page:
2/2

Title:

**STRUCTURAL STEEL
CHANNEL BEAM CONT'D**