

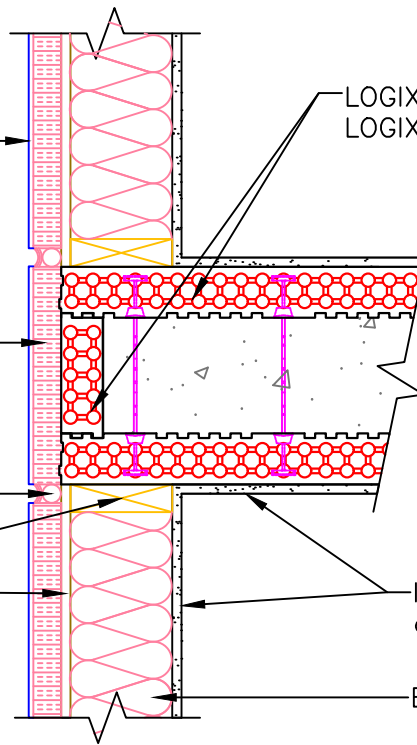
Exterior insulation  
and finish system

Rigid insulation  
on cont. moisture  
drainage sheet

Expansion joint.  
Backer rod  
and sealant

2x studs w/  
plywood  
sheathing

LOGIX Standard Form as specified w/  
LOGIX End Cap as specified



Interior drywall  
and finish

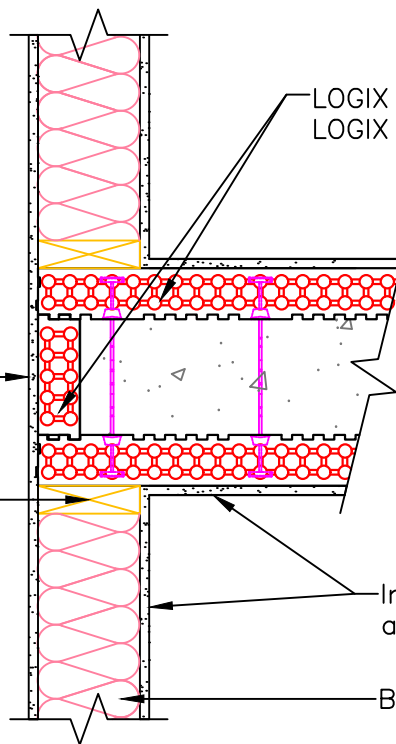
Batt insulation

### INTERIOR LOGIX WALL TO EXTERIOR STUD FRAMED WALLS

Interior drywall  
and finish  
(fasten drywall to studs)

2x studs

LOGIX Standard Form as specified w/  
LOGIX End Cap as specified



Interior drywall  
and finish

Batt insulation

### INTERIOR LOGIX WALL TO INTERIOR STUD FRAMED WALLS

**LOGIX**<sup>®</sup>  
INSULATED CONCRETE FORMS

Build Anything Better.

www.logixicf.com  
1-866-944-0153

The drawing represented herein is to be used as a reference guide only; the user shall check to ensure the drawing meets local building codes and construction practices by consulting local building officials and professionals, including any additional requirements. Logix reserves the right to make changes to the drawing without notice and assumes no liability in connection with the use of the drawing including modification, copying or distribution.

Drawing:  
5.13.1.1

Date:  
Jul 30/13

Title:

ATTACHMENT TO STUD FRAMED WALLS