

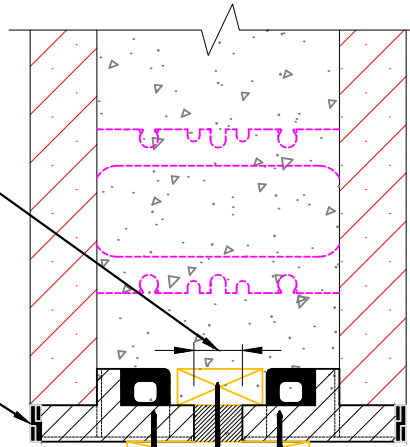
Gap created between cut pieces of Pro Buck

Gap size:

- 6.25" Pro Buck - 3.25" gap
- 8" Pro Buck - 2" gap

Logix 6.25" or 8" Pro Buck  
Cut center of buck length to suit.

Min. 2x8 vertical form support against Pro Buck.  
Fasten 2x8 to Pro Buck nailing edges.

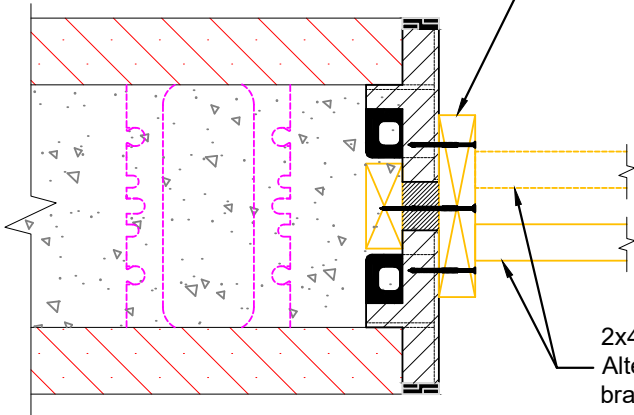


HEAD

2x4 vertical bracing

2x4 fastened to Pro Buck.  
Place at every vertical 2x form support location.

2x4 horizontal bracing.  
Alternate between vertical bracing.



JAMB

1/2" (TYP)

SILL

Logix 10" ICF

Foam fill  
PT 2x4 fastened to bracing.

**PT WOOD AND FOAM FILL  
OPTION**

**NOTES:**

1. Refer to the Logix Pro Buck Installation Guide for detailed instructions.
2. At sill location provide min. 4" diameter access ports to allow for adequate concrete placement and consolidation.



Build Anything Better.

www.logixicf.com  
1-866-944-0153

The drawing represented herein is to be used as a reference guide only; the user shall check to ensure the drawing meets local building codes and construction practices by consulting local building officials and professionals, including any additional requirements. Logix reserves the right to make changes to the drawing without notice and assumes no liability in connection with the use of the drawing including modification, copying or distribution.

Drawing:  
5.12.1.18

Date:  
Apr 29/20

Page:  
2/2

Title:  
**10" PRO BUCK ASSEMBLY SECTION DETAIL  
WITH FORM SUPPORT (OPTION 2)**