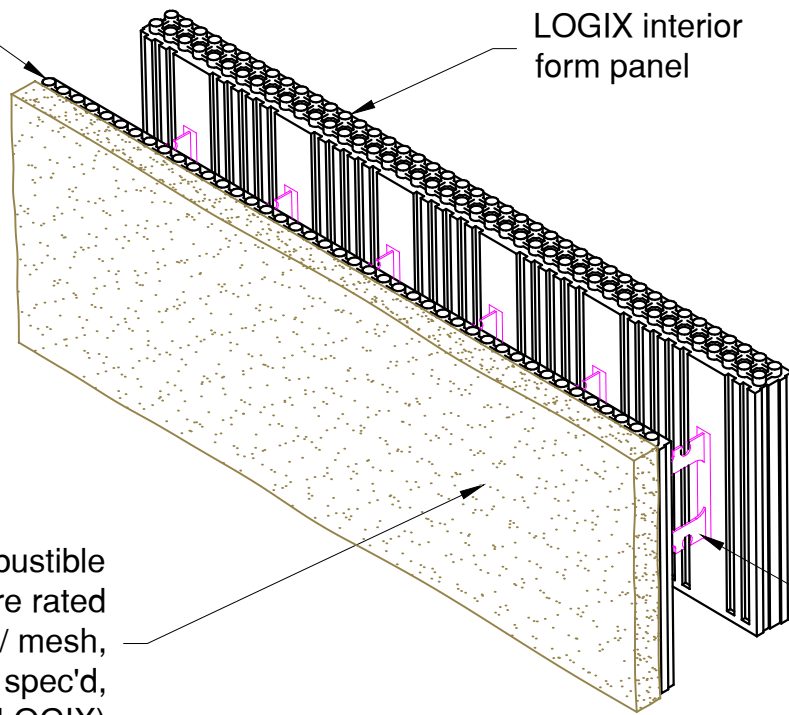


LOGIX exterior form panel

LOGIX interior form panel

Exterior non-combustible cladding (fire rated stucco finish w/ mesh, or as spec'd, applied over LOGIX)

LOGIX web ties



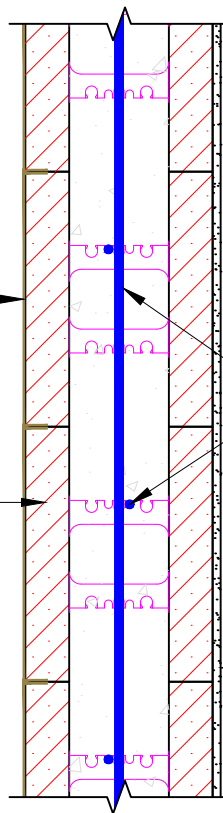
### LOGIX ICF FORM BLOCK

Exterior non-combustible cladding (fire rated stucco finish or as spec'd)

LOGIX ICF

Vertical & horizontal wall reinforcement, as spec'd

Interior finish as spec'd



### LOGIX WALL SECTION

**NOTES:**

1. Fire rated stucco w/ mesh finish shall be factory applied to LOGIX exterior form panels. (LOGIX Knockdown forms shall be used for the wall construction).
2. All exposed edges of LOGIX exterior form panels, including top of wall (top edge of top course), shall be fully covered with fire rated mesh and stucco finish..
3. All joints/seams between form panels shall be sealed with minimum  $\frac{3}{8}$ " fire stop caulking.
4. Stucco finish shall be tested to, and meet requirements, of CAN4-S114 "Standard Method of Test for Determination of Non-combustibility in Building Materials".
5. 2 hour minimum fire rating of Logix ICF, as per CAN/ULC S101-M "Standard Method of Fire Endurance Tests of Building Construction & Materials" (ASTM E119 "Standard Test Methods for Fire Tests of Building Construction & Materials").
6. Refer to Section 6 Engineering in the LOGIX Design Manual for wall reinforcement.



www.logixicf.com  
1-866-944-0153

The drawing represented herein is to be used as a reference guide only; the user shall check to ensure the drawing meets local building codes and construction practices by consulting local building officials and professionals, including any additional requirements. Logix reserves the right to make changes to the drawing without notice and assumes no liability in connection with the use of the drawing including modification, copying or distribution.

DRAWING: 5.11.1.3

DATE Jul 30/13

TITLE:

ZERO LOT LINE  
NON-COMBUSTIBLE FINISH