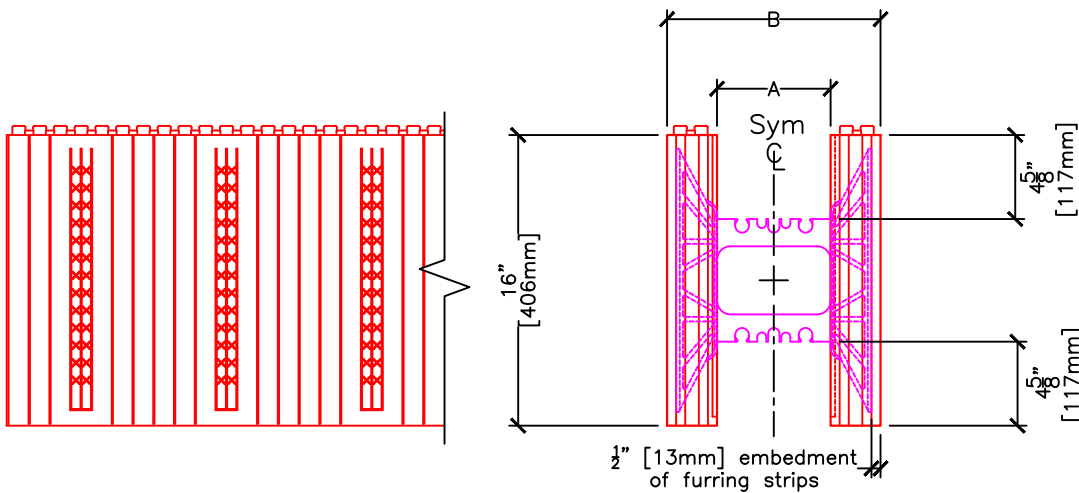
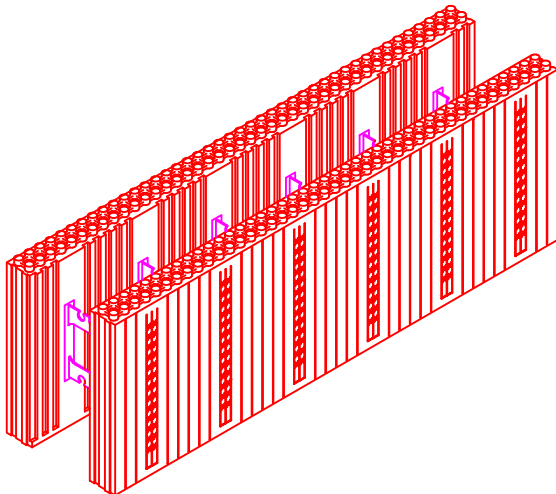


**PLAN VIEW**



**SIDE ELEVATION**

**END VIEW**



	FORM SIZES, in (mm)				
	4 (102)	6.25 (159)	8 (203)	10 (254)	12 (305)
Dimension A, in (mm)	4 (102)	6.25 (159)	8 (203)	10 (254)	12 (305)
Dimension B, in (mm)	9.5 (241)	11.75 (298)	13.5 (343)	15.5 (394)	17.5 (445)
Conc. Vol. (y <sup>3</sup> )	0.066	0.103	0.132	0.165	0.198
Conc. Vol. (ft <sup>3</sup> )	1.778	2.778	3.556	4.444	5.333
Conc. Vol. (m <sup>3</sup> )	0.050	0.079	0.101	0.126	0.151

**NOTES:**

1. Wall area per block or panel = 5.333 ft<sup>2</sup>
2. Forms are available as assembled (LOGIX PRO) or unassembled (or knock-down) form blocks (LOGIX KD Product drawings).
3. Concrete core thickness wider than 12" (305mm) are available using LOGIX Xtenders (See Logix Xtender Product drawing).
4. 6 1/4" [159mm] LOGIX Form shown.