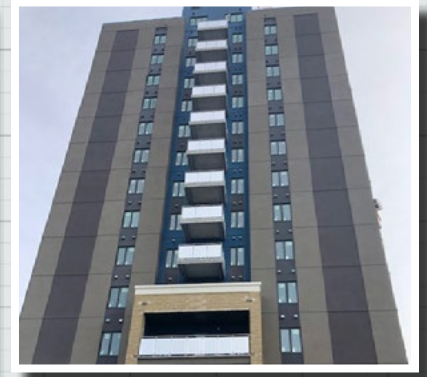




Build Anything Better.™

# LUMINO C



**TYPE OF BUILD** ----- MID-RISE MULTI-FAMILY

**SIZE** ----- 100,000 SQ.FT.

**LOCATION** -----CALGARY, AB

**YEAR BUILT** -----2020

## DESIGN HIGHLIGHTS

This purpose built apartment building is designed with 100,000 square feet of apartment living space over 16 floors. The concrete floors carry through to the concrete cores of the walls and the balcony slabs are fully embedded into the concrete cores as well.



## CONSTRUCTION FACTS

The Owner/GC used their proprietary high-slump self-consolidating concrete mix for ICFs throughout this project. This was a winter build and the concrete was placed by concrete pump for the lower 8 floors and with crane and bucket for the higher 8 floors.



## RESILIENCE, SUSTAINABILITY & COMFORT NOTES

This building is aiming for gold Built Green status and energy sensors are being used to monitor it's energy efficiency. Exterior noise reduction is also critical given the downtown location of this building.

"Affordable housing is a high priority for our local governments and the greatly reduced operating costs of this ICF building make affordable housing much more achievable."

Dan Reefke, Territory Manager

## CONTACT LOGIX ICF

Lyle Hamilton, VP  
lyle.hamilton@beaverplastics.com  
1-888-453-5961

888-415-6449

LogixICF.com

Info@LogixICF.com