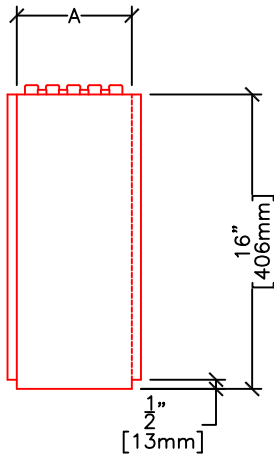


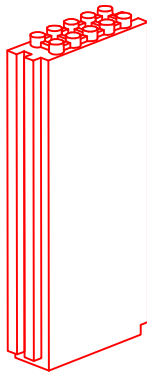
PLAN VIEW



SIDE ELEVATION

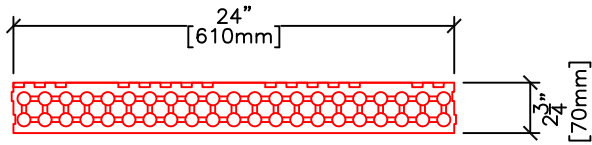


END VIEW

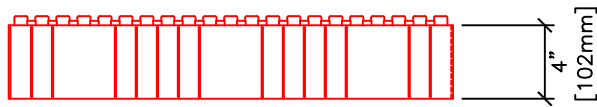


FORM SIZES				
4"	6.25"	8"	10"	12"
(102mm)	(159mm)	(203mm)	(254mm)	(305mm)

A	4"	6.25"	8"	10"	12"
	(102mm)	(159mm)	(203mm)	(254mm)	(305mm)



PLAN VIEW



SIDE ELEVATION



END VIEW

