

Want to build a  
more energy-efficient home?

Think with Logix.



**LOGIX**<sup>®</sup>  
INSULATED CONCRETE FORMS

THINK GREEN.  
AND THINK OF ALL THE MONEY YOU'LL SAVE.

# Want to build a greener home?

## Think with Logix.

### **Solar power? Wind power? Brain power.**

As you know, the cost of heating and cooling a home is getting less and less comfortable. There is a solution – when you start to think green.

Our homes are built to last while reducing your home's energy consumption. Logix Insulated Concrete Forms (ICFs) are the ideal choice for both below-grade and above-grade walls because they combine the insulating power of expanded polystyrene and the durability of reinforced concrete. The result – a home that can better withstand nature at its worst, while offering a comfortable home environment at its low-cost best.



First Universal Design home in the USA – built with Logix ICFs

THINK SMART AND BUILD FROM THE START WITH LOGIX.

## **Greater R-Value. And “aah” value.**

You design a home on paper but you value it in your heart. And while you can't see your Logix walls, you can certainly feel them through your enhanced home comfort, greater peace of mind, and the satisfaction in knowing your heating and cooling bills are about half of what they would be in a traditionally built home.

## **Industry-leading products. Industry-leading support.**

Logix's unique product offering goes beyond unsurpassed performance. We also offer a level of builder support unmatched in North America. Every smart builder knows to measure twice and cut once – and the smartest ones know that only Logix products and builder support truly measure up.



# Want to build a net-zero home?

## Think with Logix.

### It pays to think ahead.

The ideal home of tomorrow will create all the energy it consumes. With Logix, that tomorrow can start today. Or, just like any cutting-edge technology, you can start on a solid foundation and upgrade later.

### Logix XtraComfort™ Basements

Build your basement with Logix and your XtraComfort Basement will feel like another main level in your home.

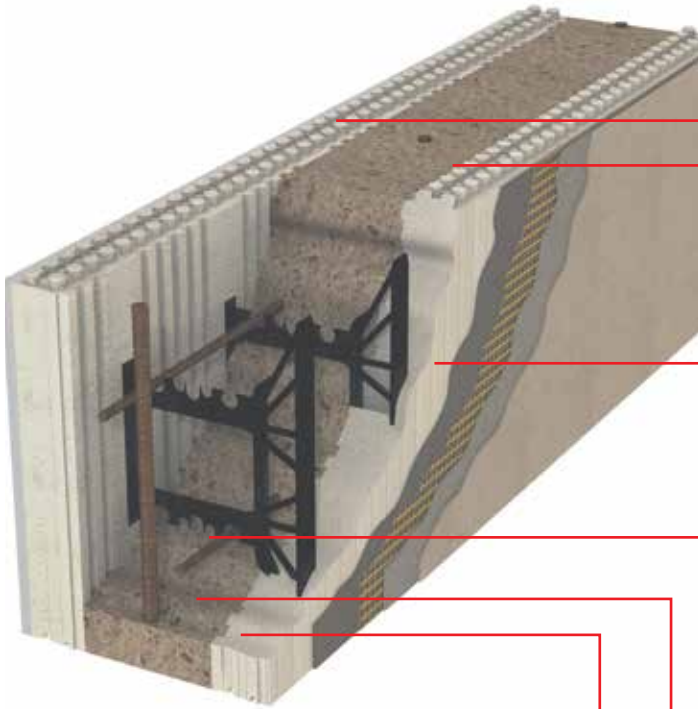
### Logix XtraComfort™ Homes

Build your entire home with Logix and you will enjoy a complete XtraComfort Home that meets your family's need for greater safety, comfort and energy efficiency – today and tomorrow.

### Logix Net-Zero Ready Homes

Combined with cost-effective renewable energy generation technology, Logix makes it easy for you to build a home that sells energy back to the grid instead of buying it.





## The thinking inside.

### Continuous foam insulation

Two thick, continuous Logix Pro foam panels envelope the home to provide an effective wall assembly R-Value of R-25.

### More air-tight

The Logix wall assembly delivers up to 60% lower air infiltration than a traditionally built wall.<sup>1</sup> This feature adds to the thermal performance of the foam insulation and makes the home even more draft-free and comfortable.

### Thermal mass boosts thermal performance

The high-mass Logix concrete core provides a significant thermal lag.<sup>2</sup> The thermal performance of the home is enhanced yet again.

### Greater safety and protection

Logix's steel-reinforced concrete core also protects your home against fires, hurricanes and earthquakes.

### Exceptional soundproofing

The concrete core significantly reduces the penetration of outside noise.

<sup>1</sup> CMHC "Monitored Thermal Performance of ICF Walls in MURBs", 2005

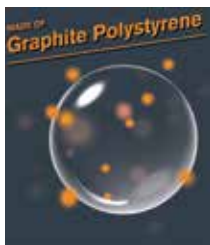
Actual results may vary.

<sup>2</sup> ICFMA "Thermal Performance of an ICF Wall System Compared to a 2x6 Wall System", 2016

Actual results may vary.

## Higher intelligence.

Forward-thinking members of the Logix product family.



### Logix Platinum Series™

There's no ICF like Logix Platinum Series! Powered by millions of graphite heat reflectors, Logix's grey/silver-colored Platinum Series delivers an incredible R-Value of R-28.

### Logix Tx Series™

Specially treated to protect against termites, even in areas known to have very heavy termite concentrations.

Available upon request from our plants in Kansas and Tennessee only.



# Want to build a safer, more sound-proof home?

## Think with Logix.

### Energy Efficiency

### Sustainability, Safety & Disaster Resistance

### Health & Comfort

#### Wood-Frame Wall System

- Thermal bridging allows energy loss
- Insulation gaps
- Insulation (R-Value) erodes over time



Thermal image of a conventionally built home

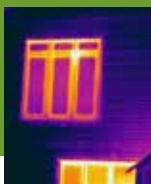
- People's lives – and entire towns and neighborhoods – have been decimated by severe fires, hurricanes and earthquakes

- May contain adhesives and chemicals that could present adverse long-term health effects through off-gassing (evaporation)
- Wood and moisture provide an ideal environment for mold

#### Typical Logix Wall Assembly

##### The smarter technology

- No thermal bridging prevents energy loss
- Continuous insulation
- Constant R-Value of up to R-28 for life



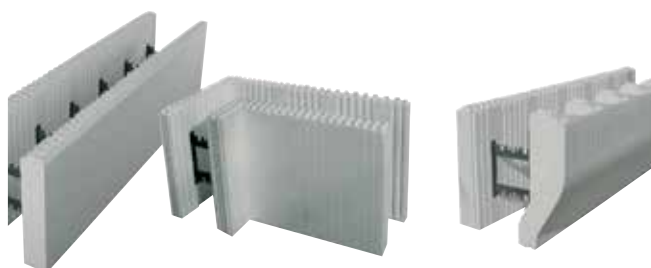
Thermal image of a Logix XtraComfort™ Home

##### The stronger technology

- Wind Protection – Wind-rated to over 300 mph
- Fire Protection – 4-hour fire rating
- Earthquake Protection – Engineering available for all seismic zones
- Moisture Protection – Does not rot

##### The friendlier technology

- EPS and concrete are non-toxic and do not emit gas
- No nutrient source exists in structure for mold growth
- Outside noise reduced to a whisper



### Irresistible peace of mind

- Frost Resistant
- Mold Resistant
- Crack Resistant
- Pest Resistant
- Termite Resistant\*
- Waterproof
- No Nail Pops
- Superior Sound Insulation

\*With Logix Tx Series

## How we do it.

The best ICF builder support program in North America.



Locally deployed technical support staff

Installer training courses

Over 400 local stocking distributors and multiple manufacturing facilities across North America

## How they do it.

Thousands of builders have taken Logix training programs and are available to offer you competitive pricing for your project.



1 Prepare the job site

2 Place the first course

3 Place the rebar



4 Brace the wall

5 Pour the concrete

6 Install rough electrical and plumbing

# Want to live in the perfect home?

## Think with Logix.

Although the up-front cost of a Logix home may be slightly higher than a traditional wood-framed home, the actual "overall living" cost can often be lower.

	Traditional Wood Frame	Logix
House Price	\$300,000	\$315,000
Monthly Mortgage	\$1,920	\$2,016
Monthly Energy Bill	\$350	\$150
Monthly Home Insurance Premium (based on coastal areas)	\$185	\$60
Total Monthly Cost	\$2,455	\$2,226
<b>Monthly Savings</b>	<b>\$0</b>	<b>\$229</b>

The above are estimates only. Construction, mortgage and energy costs may vary depending on style/design and location of home.

The home built with Logix will save you approximately \$200 in monthly energy costs and up to \$125 in monthly insurance costs, allowing you to pay off your mortgage sooner.



## Think "now".

To find out more about how you can build green with Logix, call toll free **1.888.415.6449** or visit **LogixICF.com**.

Webs are made entirely of recycled plastic.  
Logix foam panels are entirely recyclable.



### FOR MORE INFORMATION:

Visit [LogixICF.com](http://LogixICF.com). • Email us at [info@logixicf.com](mailto:info@logixicf.com). • Call your local Logix ICF manufacturer below.



11581-272 Street  
Acheson, AB  
Canada T7X 6E9  
1.888.453.5961

P.O. Box 16923  
Wichita, KS  
USA 67216  
1.888.838.5038

#215-6333  
Unsworth Rd.  
Chilliwack, BC  
Canada V2R 5M3  
1.888.453.5961

106 Perma "R" Rd.  
Johnson City, TN  
USA 37604  
1.800.251.7532

840 Division St.  
Cobourg, ON  
Canada K9A 5V2  
1.888.706.7709

35 Headingley St.  
Headingley, MB  
Canada R4H 0A8  
1.877.789.7622

31381 Pond Rd.  
Building #2  
McFarland, CA  
USA 93250  
1.888.453.5961