

LOGIX[®]

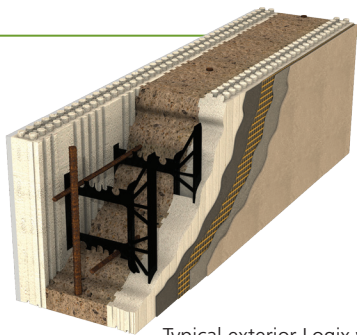
HIGH PERFORMANCE

TALL WALLS

Introducing the Logix High Performance Tall Wall solution for military facilities, schools, retail buildings and entertainment complexes. Our composite tall wall solution consists of three integrated elements:

- ✓ **The rugged and versatile Logix Insulated Concrete Form product line**
- ✓ **The Uniscaffold ICF tall wall bracing system**
- ✓ **Expert design, costing and implementation support**

Our tall wall solution will empower you to build high performance tall walls quickly, safely and with precision.



Typical exterior Logix wall assembly

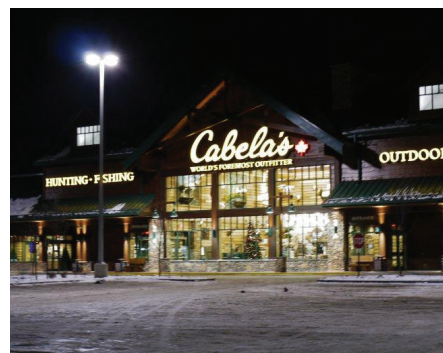
- ✓ Sound Proof
- ✓ Seismic Design
- ✓ Fire and High Wind Resistant
- ✓ Suitable for non-combustible construction
- ✓ Continuous foam insulation
- ✓ Air-Tight
- ✓ 5-day thermal lag



Logix High Performance Tall Walls (in progress)

High Performance Tall Walls Built Quickly, Safely And With Precision

- ✓ Extensive pool of trained and Logix-experienced trades for competitive bids & quality builds.
- ✓ Superior construction speed. Logix High Performance Tall Walls typically require about half the labor needed to construct comparable CMU wall assemblies. This can mean a shorter financing period and incoming revenues sooner than later.
- ✓ Uniscaffold ICF bracing can support tall walls up to 125' high without additional engineering.
- ✓ Uniscaffold bracing is secured to the concrete core in the wall, providing an attachment strength that exceeds OSHA standards by 10x.
- ✓ Continuous insulation, low air infiltration and thermal mass combine to deliver significantly lower heating, cooling and operating costs for life.



Finished Retail Building

Wall Assembly

R-Value

Logix Pro

25

Logix Platinum

28

Logix D-Rv

33-37

Logix XRV

30-75

Solutions & Support for Designers and Builders

- ✓ 30 full-time dedicated Logix technical sales & support staff
- ✓ Extensive pool of trained & Logix-experienced trades
- ✓ Design optimization guidelines, CAD details & sections, BIM Ready
- ✓ Shop drawing service available
- ✓ On-site, in-class and in-office training and technical support
- ✓ Accurate and interactive estimating and engineering support software

Contact us for more information or to arrange for an in-person, on-line or telephone meeting with a Logix ICF technical advisor.



888.415.6449 | logixicf.com | info@logixicf.com

Think with Logix.