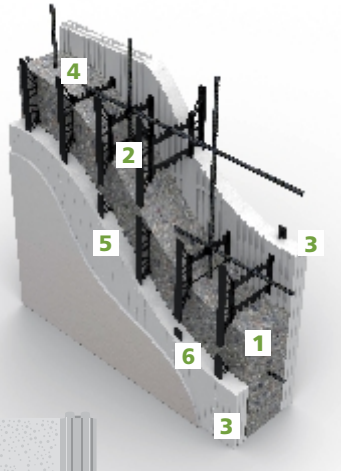


Theater owners and entertainment complex developers navigate within an exceptionally fast-changing industry and Logix ICF is the ideal entertainment complex solution for today and tomorrow. It's a fast and inexpensive build with a great result – a tough and durable building that's as sound-proof, space-efficient and energy-efficient as they come.

SIX CONSTRUCTION STEPS IN ONE EFFICIENT PACKAGE

1. Concrete
2. Steel Reinforcement
3. Insulation
4. Air Barrier
5. Vapor Barrier
6. Furring Strips



EXCEPTIONAL SOUND-PROOFING



High Performance Profits

- Superior construction speed. Logix, with "6 construction steps in 1", is typically faster than regular CMU construction. This means a shorter financing period and incoming revenues sooner than later.
- Sound-Proof. Sound transmission class ratings of 56 and higher for interior and exterior walls are easily achieved with typical Logix wall assemblies using an 8" concrete core. This is a much simpler than the common alternatives, such as double insulated 2 x 6 or 2 x 8 walls with 3"– 5" air gaps between walls.
- Using Logix to build the interior demising and shear walls creates a stronger structure and this in turn allows for a streamlined structural design and a lighter roof structure.
- Logix accommodates a wide variety of facades, which allows you to design the appearance of your building in alignment with your brand and image.

Logix is The ICF Solutions Company

We provide full-service support and turn-key expertise to designers, GC's and installers to shorten your learning curve and maximize project success. **Over 100 million square feet of Logix ICFs has been successfully installed since 2002.**

- Design Assistance
- Crew-Specific Training & On-site QC
- ICF Advisory Services

Contact us for more information or to arrange a meeting with a Logix ICF Technical Advisor.



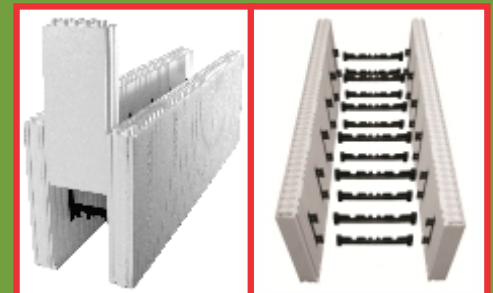
Build Anything Better.



THEATER COMPLEX BUILT WITH LOGIX

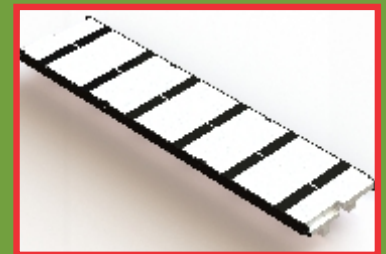


FINISHED THEATER COMPLEX



TERMINATE WALLS FAST WITH REVERSIBLE ENDCAPS

WORK WITH REBAR EASILY WITHIN THE WALL CAVITY WITH LOGIX KD



COMPLETE THE EFFICIENT ICF ENVELOPE BY FRAMING ALL OPENINGS WITH LOGIX PRO BUCK

888.415.6449 • info@logixicf.com

LogixICF.com