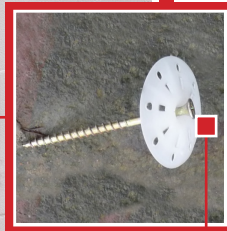


WALL OPENINGS

THE COMPLETE SOLUTION

Logix Pro Buck™



- **Concrete anchors every 8" o/c –**

To ensure a solid connection to the concrete wall

These anchors also provide a chair for horizontal rebar placement.

- **Enables easy, void-free concrete placement under the opening.**

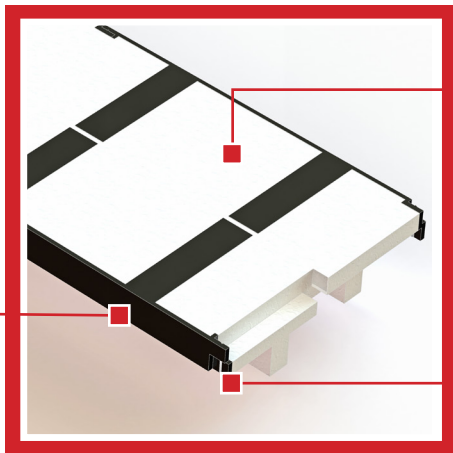
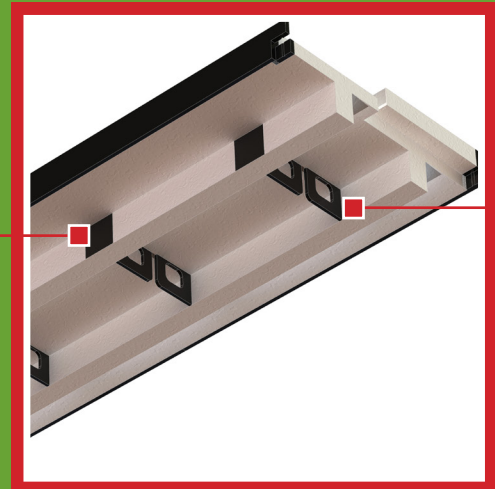
Foam-only areas for 4" access holes

- **Strong, secure, reliable fastening –**

High-strength exposed furring strips

- **Fast picture framing to the internal flanges every 8" o/c –**

That does not have to be removed for finishing!



- **Strong & dependable insulating form –**

High-density 2lb foam

- **Minimal waste –**

Leftover pieces securely clip together end-to-end, generating minimal waste

WATCH THE VIDEO

Provide picture framing support at the top or bottom of opening if the Logix blocks has been cut compromising the integrity of the web ties.

Provide picture framing at the sides to secure Pro Bucks if there are more than 3 foam bars unsupported by a web along the sides of the opening. Fasten to internal furring strips with Wind Devils or equivalent.

STEP 5:
Cut 2 x wood sections at sides to fit snug between top horiz. 2 x wood piece and bottom 2 x wood sections. Toe-nail into place and fasten to furring strips.

STEP 6:
Cut vert. 2 x wood sections to fit snug between top horiz. 2 x wood piece and bottom 2 x wood sections. Toe-nail into place.

STEP 7:
Cut horiz. 2 x wood sections to fit snug between 2 x wood side pieces, and toe-nail into place. Fasten vert. bracing to horiz. bracing. Provide every 2 ft.

When the walls are built to the height of the opening installation of the Pro Buck can begin. Rough opening is measured between the Pro Bucks. Therefore, to account for the 1.5" thickness of Pro Buck, the opening in the Logix ICF wall should be 3" wider and 3" taller than the rough opening.

STEP 4:
Cut 2 x wood sections to support vertical bracing every 2 ft. Add additional wood sections at corners. Fasten to furring strips.

STEP 3:
Install Pro Buck bottom piece to fit between the two Pro Buck side pieces.

Drill min. 4" access ports every 16" prior to placing bottom Pro Buck piece. Replace cut piece after concrete pour, or bring concrete flush to Pro Buck surface.

Continue stacking Logix Blocks after top Pro Buck piece is installed.

Rebar can be placed and tie-wired to tie-back loops to create 1.5" concrete cover around opening.

Tie-back loops can be zip-tied to web ties to further secure Pro Bucks.

STEP 2:
Install Pro Buck top piece to fit entire width opening.

Fasten 2 x wood to furring strips prior to installing top Pro Buck piece.

Cut lapped ends at corners to create butt joint.

Fins with internal furring strips every 8". Fins provide friction fit support to Logix blocks.

STEP 1:
Install Pro Buck side pieces to fit between top Pro Buck piece and bottom opening..

Use a membrane flashing to cover the joints between Pro Bucks and Logix blocks.

Exposed furring strips every 8" for fastening window or door frames. Wood screws are recommended.